

# The Cutting Edge®

Downloadable Version at  
[cuttingedge.com/pdf](https://cuttingedge.com/pdf)

KLSP92674  
Swenson

KLSP92650  
Haslinger

KLSP92659  
Holder

KLSP92617  
Wright

Pre-Owned and Handmade Knives  
for Immediate Delivery  
January/February 2024



# The Cutting Edge®

**A. G. Russell's List of Knives for Immediate Delivery - January/February 2024**

**Orders Accepted Only by Phone – 800-965-6433**

The expiration date of your subscription is printed on the top line of the mailing label on this book and is indicated as S2024, S2025, etc., followed by the month of the expiration. An example would be S202412, which means that your current subscription will expire at the end of December 2024. We are currently mailing six (6) printed books each year.

The cost of printing and mailing these books is such that we can no longer mail them to folks who are not purchasing. If you have not purchased from *The Cutting Edge*® anytime during the past twelve (12) months, you will need to subscribe as follows:

KL ——— Annual Subscription - within the USA — \$15.00

KL-INT — Annual Subscription - International — \$30.00

If you are receiving an email notice of a posted PDF of the book, you will continue to receive that email as long as the email address we have for you works. If you do not currently receive an email with a link to this catalog and wish to, send an email to [ce-info@cuttingedge.com](mailto:ce-info@cuttingedge.com) or call 800-965-6433 (email works best) and tell us to email you that link each time a new book is going into the mail.

When you find one or more knives that you would like to purchase, make a phone call to 800-965-6433 between the hours of 8:30 a.m. and 4:30 p.m. CT Monday – Friday. There is only one of each of these knives and some will go quickly. **Orders for these knives cannot be placed online.** We can charge your purchase to Visa, Mastercard or Discover, or we can hold a knife for up to ten business days to allow you to send a personal check.

*cuttingedge.com* continues to be very active, with new knives added on the Wednesday closest to the 1st of the month, and sometimes on Wednesday of the 3rd or 4th week of the month. Prices on knives that have been listed on *cuttingedge.com* more than one month are reduced on the Wednesday closest to the 15th of each month. A reminder is sent on each of these Wednesdays as a part of the **A.G. Russell Weekly Special**. Be sure that we have your current email address so you can get these reminders. Send the email address to [ce-info@cuttingedge.com](mailto:ce-info@cuttingedge.com) or call 800-965-6433 (email works best).

## Preview Period:

Any knife purchased from this list may be returned within 14 days for a refund. If you return the knife after the 14 days, we will happily put it on consignment for you.

Standard Shipping (48 States) ————— \$8.95

Accelerated Service (48 States) ————— 4-5 days ————— add \$7.00

Expedited Service (48 States) ————— 3-4 days ————— add \$15.00

Express Service (48 States) ————— 1-2 days ————— add \$30.00

Alaska, Hawaii & Territories (U. S. Mail) ————— add \$7.00

Shipping outside the U.S. will be billed at actual cost.

Sorry, No COD Shipments.

All fixed blades include a sheath unless otherwise noted.

Folders **do not** include a pouch unless so indicated.



**Robert Young - Micro Bear Sub Hilt Fighter**

Fixed Blade, Full Tapered Tang, 3 1/4" Blade, CPM-154 Stainless, 60 Rc - Cyro Treat, Ram's Horn Handle Scales, Stainless Hilt, Stainless Thong Hole, Red Liners, 7 1/4" OAL, New from maker. Mirror polish blade has maker's logo on obverse and serial number 'C481' on reverse blade. Colorful horn scales. Made-to-fit brown leather sheath has matching serial number and maker's signature.

KLSP92454 ————— \$ 900.00



**Robert Young - Boot Knife**

Fixed Blade, Full Tapered Tang, 4" Blade, CPM-154 Stainless, 60 Rc. - Cyro Treat, Ram's Horn Handle Scales, Stainless Guard, Stainless Thong Hole, Red Liners, 8 1/2" OAL, New from maker. Mirror polish blade with maker's logo on obverse and serial number 'C478' on reverse blade. Closely matched horn scales. Made-to-fit brown leather sheath has matching serial number.

KLSP92456 ————— \$ 765.00



**Don Hethcoat - Cowboy Crossdraw**

Fixed Blade, Full Tapered Tang, 3 1/2" Blade, Damascus Steel, Premium Stag Handle Scales, 6 1/2" OAL, New from New Mexico ABS mastersmith. Blade is high carbon 1095-15N20 steel Damascus. Well-matched premium Sambar Stag handle scales. Dark brown horizontal sheath with ostrich pattern is magnetized for additional strength in holding blade in place. Blade is marked '110' on reverse side with maker's name on obverse side.

KLSP92458 ————— \$ 745.00



**Don Hethcoat - Linerlock**

Folder, 3 1/4" Blade, Damascus Steel, Mammoth Ivory Handle Scales, Damascus Bolsters, Titanium Liners, 3 3/4" Closed, New from New Mexico ABS Mastersmith. Blade and bolsters are high carbon 1095-15N20 steel. Complimentary patterned blade and bolsters. Checkered thumb stud. Smooth, well-matched mammoth ivory scales. Filework on backspacer. Maker's last name on inside spacer. Ships in velvet pocket pouch.

KLSP92461 ————— \$ 765.00



#### Stan Shaw - Traditional Sheffield Lockback

Folder, 4" Blade, Gold-Plated Etching, Stainless Steel, Buffalo Horn Handle Scales, Nickel Slv Bolsters, Stainless Bail, Brass Liners, 5 1/8" Closed, Pre-owned. Not used or carried. Mirror polish blade has a long, deep nail nick, an etched cheetah chasing an impala and is marked 'Stan Shaw Sheffield England' on obverse and stainless steel on reverse ricasso. Filework along the blade spine and around the lockbar. Pinned water buffalo horn scales. Pinched bolsters. Jimpping around the liners. Mr. Shaw was a preeminent Sheffield cutler who passed in 2021 at the age of 94 with almost 80 years of experience. Known as 'The Last Little Mester', he had a prolific career. Ships in zippered. case.

KLSP92465 \_\_\_\_\_ \$ 1435.00



#### Stan Shaw - Traditional Sheffield Lockback

Folder, 4" Blade, Gold-Plated Etching, Stainless Steel, Pinned Mother-of-Pearl Scales, Nickel Slv Bolsters, Nickel Slv Spacer, Stainless Bail, Brass Liners, 5 1/8" Closed, Pre-owned. Not used or carried. Mirror polish blade has a long, deep nail nick, an etched lynx chase scene and is marked 'Stan Shaw Sheffield England' on obverse and 'Stainless Steel' on reverse ricasso. Filework along the blade spine and around the lockbar. Four-piece pinned fiery, premium mother-of-pearl handle scales. Pinched bolsters. Jimpping around the liners. Mr. Shaw was a preeminent Sheffield cutler who passed in 2021 at the age of 94 with almost 80 years of experience. Known as 'The Last Little Mester', he had a prolific career. Ships in zippered case.

KLSP92466 \_\_\_\_\_ \$ 1525.00



#### John H. Davis - Damascus Fighter

Fixed Blade, Hidden Tang, 6 3/4" Blade, Damascus Steel, Buffalo Horn Handle, Copper Guard, Copper Butt Cap, Blk & Copper Spacers, 11 5/8" OAL, Pre-owned. Not used or carried. Silver Streak Damascus of 1095/15N 20/Nickel. Nice copper fittings. Handle consists of Buffalo Horn with fossilized walrus ivory 7/8" spacer. Brown leather sheath has insert of rattlesnake skin. Card from the maker stating specifics about the knife is included. CANNOT SHIP OUTSIDE U.S.A.

KLSP92469 \_\_\_\_\_ \$ 985.00



#### Stek Knives - Camp

Fixed Blade, Hidden Tang, 7 1/2" Blade, Forged, 1095 Carbon Steel, Stag Handle, Nickel Silver Guard, Nickel Silver Butt, 12" OAL, Pre-owned. Never used or carried. Mirror polish blade. Nice stag round handle. Red, black, nickel silver and turquoise spacers. Heavy-duty brown leather sheath.

KLSP92470 \_\_\_\_\_ \$ 625.00



#### Stek Knives - Camp

Fixed Blade, Hidden Tang, 8 1/2" Blade, Forged, 1095 Carbon Steel, Sambar Stag Round Handle, Nickel Slv Guard, Nickel Slv Butt, 13 3/8" OAL, Pre-owned. Never used or carried. Mirror polish blade. Nice curved stag round handle. Stainless, red fiber and buffalo horn spacers. Heavy-duty brown leather sheath from the maker.

KLSP92471 \_\_\_\_\_ \$ 715.00



#### Stek Knives - Large Camp

Fixed Blade, Hidden Tang, 9" Blade, Forged, 1095 Carbon Steel, Large Sambar Stag Round Handle, Nickel Silver Guard, Nickel Silver Butt, 14 3/4" OAL, Pre-owned. Never used or carried. Mirror polished blade. Large stag handle. Black, stainless, red and buffalo horn spacers. Heavy-duty brown leather sheath from the maker.

KLSP92472 \_\_\_\_\_ \$ 805.00



#### Ricardo Perpina - Fighter

Fixed Blade, Full Tang, 7" Blade, 440C Stainless, Black Micarta Handle Scales, Brass Guard, Brass Thong Hole, 11 3/4" OAL, New from maker. Mirror polish blade finish. Small scuff marks on guard from sheath storage. Well-fitted micarta handle scales. Brown Argentine leather sheath from the maker.

KLSP92474 \_\_\_\_\_ \$ 610.00



#### Ricardo Perpina - Damascus Fighter

Fixed Blade, Full Tapered Tang, 9 1/2" Blade, Damascus Steel, Mammoth Ivory Handle Scales, Damascus Guard, Thong Hole, Red Liners, 14 1/2" OAL, New from the maker. Nicely defined damascus blade, double hilt and collar. Closely matched mammoth ivory handle scales. Brass pins and thong hole. Brown Argentine leather sheath.

KLSP92475 \_\_\_\_\_ \$ 1170.00



#### Ricardo Perpina - Fighter

Fixed Blade, Full Tang, 7 3/4" Blade, 440C Stainless, Red Deer Stag Handle Scales, Brass Guard, Thong Hole, 12 5/8" OAL, New from maker. Mirror polish blade with maker's name on obverse ricasso. Matched stag scales. Brown Argentine leather sheath.

KLSP92476 \_\_\_\_\_ \$ 810.00



#### John Young - Damascus Bowie

Fixed Blade, Stick Tang, 8" Blade, Damascus Steel, Sambar Stag Handle, Stainless Guard, Stainless Pommel, 12 3/8" OAL, Pre-owned. Never used or carried. Damascus contents 1085/15N20/L-6 steels. Nice stag round handle. Tooled brown leather sheath from the maker. Ships in zippered case.

KLSP92477 \_\_\_\_\_ \$ 805.00



#### John Young - Damascus Hunter

Fixed Blade, Stick Tang, 4" Blade, Damascus Steel, Stag Round Handle, Stainless Guard, Stainless Pommel, 8 1/2" OAL, Pre-owned. Not used or carried. Damascus made of 1085/15N20/L-6 steels. Polished hardware. Nice stag handle. Tooled brown leather sheath from the maker. Ships in zippered case.

KLSP92478 \_\_\_\_\_ \$ 515.00





#### Chuck Hawes - Fighter

Fixed Blade, Hidden Tang, 4 3/4" Blade, Damascus Steel, Stag Round Handle, Brass Double Hilt, 5/8" Mosaic Pin Butt, 9 1/4" OAL, Pre-owned. Not used or carried. Damascus blade has sharpened top edge. Maker's name on obverse blade. Red, brown and black fiber spacers. Brown tooled leather sheath. Ships in zippered case.

KLSP92480 ————— \$ 630.00



#### Harry Noel - Damascus Hunter

Fixed Blade, Stick Tang, 4 1/2" Blade, Damascus Steel, Dyed Stag Round Handle, Stainless Guard, Stainless Butt Plate, 8 1/2" OAL, Pre-owned. Not used or carried. Damascus made of 1080/15N20/L-6 steels with limited filework on blade spine. Maker's initials on obverse ricasso. Nice curved stag round handle. Dark brown leather sheath has light tooling. Ships in zippered case.

KLSP92483 ————— \$ 535.00



#### Harry Noel - Damascus Hunter

Fixed Blade, Stick Tang, 3 7/8" Blade, Damascus Steel, Stag Round Handle, Stainless Guard, Stainless Butt Plate, 8" OAL, Pre-owned. Not used or carried. Damascus blade has maker's initials on the obverse ricasso and light filework on the blade spine. Slight curve in the stag handle. Polished hardware. Brown leather sheath has light tooling. Ships in zippered case.

KLSP92484 ————— \$ 535.00



#### Mike "Whiskers" Allen - Damascus Lockback

Folder, 2 1/2" Blade, Damascus Steel, Armadillo Handle Scales, Damascus Bolsters, Stainless Liners, 3 1/2" Closed, Pre-owned. Not used or carried. Damascus blade has opening hole with filwork on the blade spine. Complimentary damascus dovetailed bolsters. Gray colored armadillo scales. Filework around the entire liners and the lockbar. Maker's mark 'Whiskers 12:09' located inside lockbar. There is also a maker's fob attached to the knife. Ships in zippered case.

KLSP92485 ————— \$ 625.00



#### James B. "Jimmy" Lile - Gentleman's Slipjoint

Folder, 2 1/4" Blade, Stainless Steel, Nickel Silver Frame, Nickel Slv Bolsters, Thong Hole, Integrated Liners, Buffalo Horn Inlays, 3" Closed, Pre-owned. Not used or carried. Vintage Jimmy Lile. Satin finish blade with nail nick and 'LILE' on obverse ricasso. Buffalo horn onlays. Stainless back spring. Nice action. Ships in blue suede pouch.

KLSP92488 ————— \$ 585.00

*All fixed blade knives include a sheath  
unless otherwise stated.*



#### Steve Johnson - Small Mother-of-Pearl Dagger

Fixed Blade, Full Tapered Tang, 2 1/2" Blade, ATS-34 Stainless, Mother-of-Pearl Handle Scales, Engraved SS Bolsters, Stainless Hilt, Thong Hole, Engraved Pins, 4 7/8" OAL, From A.G. Russell private collection. Exquisite small knife has a mirror polish dagger blade. Beautiful engraving on bolsters and pins by Julie Warenski (signed on tang). Marked 'S.R. Johnson Manti, Utah'. Brown leather sheath with snap from the maker. As you would expect, absolutely impeccable. Ships in zippered pouch. Very rare.

KLSP92489 ————— \$ 4500.00



#### R.W. "Bob" Loveless - Lawndale Straight Hunter

Fixed Blade, Improved Handle, Full Tapered Tang, 3 3/4" Blade, Stainless Steel, Stag Handle Scales, Thong Hole, Dark Red Liners, 8 1/4" OAL, From A.G. Russell private collection. Mirror polish blade is marked 'R.W. Loveless maker Lawndale, California' on obverse blade with 'S-344' etched on ricasso. Closely matched stag scales. Brass lanyard tube. Original brown leather sheath is in excellent condition, as is the vintage knife. Ships in a zippered case.

KLSP92492 ————— \$ 6750.00



#### Robert Young - Chute Knife

Fixed Blade, Full Tapered Tang, 4 1/2" Blade, Sharpened Top Edge, RWL-34 Stainless, 60 Rc. Cyro-Treat, Green Canvas Micarta Scales, Stainless Dbl Guard, Stainless Thong Hole, Red Liners, 9 1/2" OAL, New from maker. Mirror polish blade with maker's name and logo on obverse and '501' on reverse ricasso. Polished guard has drilled holes. Brown leather sheath from the maker is marked '501' and is made-to-fit the knife.

KLSP92494 ————— \$ 675.00



#### Robert Young - Boot Knife

Fixed Blade, Full Tapered Tang, 4" Blade, CPM-154 Stainless, 60 Rc. Cyro-Treat, Black Ash Burl Handle Scales, Stainless Dbl Guard, Stainless Thong Hole, Red Liners, 8 5/8", New from maker. Mirror polish blade with maker's name and logo on obverse and '491' etched on reverse. Polished stainless fittings. Nicely figured burl handle scales. Brown leather sheath from the maker is signed and serial numbered '491'.

KLSP92495 ————— \$ 720.00



#### Pete Truncali - Lockback

Folder, 2 5/16" Blade, CPM-154 Stainless, Rag Burl Micarta Handle Scales, Stainless Bolsters, Stainless Liners, 3 3/4" Closed, New from maker. Satin finish blade with nail nick. Maker's name and '2023' on obverse ricasso. Hammered stainless steel bolsters. Nicely patterned micarta shows brown, red and green coloring. Filework along the spine, lockbar and spacer. Ships in zippered pouch with authenticity card from maker.

KLSP92497 ————— \$ 405.00



#### Pete Truncali - Lockback

Folder, 2 11/16" Blade, CPM-154 Stainless, Apple Coral Handle Scales, Black G-10 Bolsters, Stainless Liners, 3 5/8" Closed, New from maker. Satin finish blade with nail nick. Maker's name and '2023' on obverse ricasso. The black G-10 bolsters contrast nicely with the vivid red apple coral scales. Filework along the spine, lockbar and spacer. Ships in zippered pouch with authenticity card from maker.

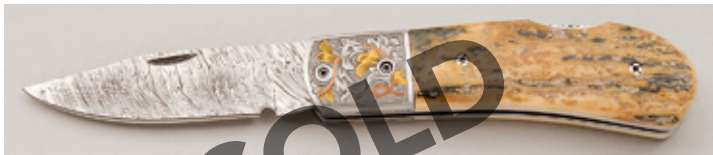
KLSP92499 ————— \$ 535.00



#### Pete Truncali - Damasteel Lockback

Folder, 2 15/16" Blade, Damasteel, Smooth Mammoth Ivory Scales, Damasteel Bolsters, Stainless Liners, 4" Closed, New from maker. Polished damasteel blade with nail nick and matching bolsters. Well-matched, colorful mammoth ivory scales. Filework on lockbar. Ships in zippered pouch with authenticity card from maker.

KLSP92500 ————— \$ 1685.00



#### Pete Truncali - Damasteel Lockback

Folder, 2 11/16" Blade, Damasteel, Mammoth Ivory Handle Scales, Stainless Bolsters, Stainless Liners, 3 11/16" Closed, New from maker. Polished damasteel blade with nail nick. Maker's name and '2023' inside lockbar. Exquisitely engraved bolsters with 24K Gold Inlay by Bass Engraving. The mammoth ivory scales are well-matched and have texture. Filework on the lockbar and spacer. Ships in zippered pouch with authenticity card from the maker.

KLSP92501 ————— \$ 1980.00



#### D'Alton Holder - Mitchell's Clip Fancy Hunter

Fixed Blade, Hidden Tang, 6 1/2" Blade, Blue Damascus Steel, Mammoth Ivory Handle, Nickel Silver Guard, 11" OAL, Pre-owned. Not used or carried. Blue damascus by J. Ferguson is stamped on the reverse ricasso 'D'holder'. Exquisitely engraved guard has vines and trees and is signed 'Bruce Shaw'. The handle is scrimshawed by Linda Karst Stone (signed) and depicts three bull elephants on the obverse & a single charging bull elephant on the reverse side. So intricately detailed, the handle also has black fiber, nickel silver, brass and wood spacers. This custom piece is an absolute work of art. No sheath. Ships in zippered case marked 'D'holder Wickenburg, AZ'.

KLSP92503 ————— \$ 2250.00



#### Andreas Kalani - BOLVERK - HEEVA Hunter

Fixed Blade, Full Tang, 4" Blade, 80CrV2 Carbon Steel, Birdseye Maple Handle Scales, Thong Hole w/Lanyard, Carbon Fiber Liners, 7 3/8" OAL, New from maker. Hand-rubbed satin finished high carbon steel blade with intricate laser engraving on both sides of blade and along the tang. Colorful maple handle scales. Brown hybrid kydex/leather sheath has maker's stamp on reverse side. Comes with Certificate of Authenticity and a small container of Moommix wax.

KLSP92505 ————— \$ 875.00



#### Andreas Kalani - BOLVERK - TANIA Hunter

Fixed Blade, Full Tang, 4" Blade, 80CrV2 Carbon Steel, Curly Maple Wood Handle Scales, Thong Hole w/Lanyard, Carbon Fiber Liners, 7 3/8" OAL, New from maker. Hand-rubbed satin finished high carbon steel blade with intricate laser engraving on both sides of blade and along the tang. Maker's logo and name on bottom tang. Nicely figured curly maple scales. Brown hybrid kydex/leather sheath has maker's stamp on reverse side. Comes with Certificate of Authenticity and a small container of Moommix wax.

KLSP92506 ————— \$ 875.00



#### Andreas Kalani - BOLVERK - SOLENA Hunter

Fixed Blade, Full Tang, 4" Blade, 80CrV2 Carbon Steel, Black & White Ebony Scales, Thong Hole w/Lanyard, Carbon Fiber Liners, 7 3/8" OAL, New from maker. Hand-rubbed satin finished high carbon steel blade with intricate laser engraving on both sides of blade and along the tang. Maker's logo and name on bottom tang. Very striking ebony wood handle scales with black carbon fiber liners. Brown hybrid kydex/leather sheath has maker's stamp on reverse side. Comes with Certificate of Authenticity and a small container of Moommix wax.

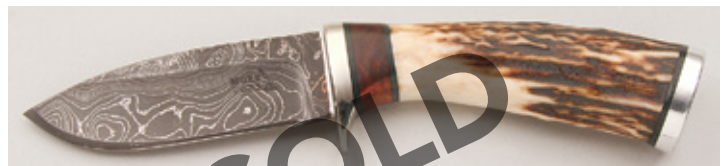
KLSP92507 ————— \$ 875.00



#### Andreas Kalani - BOLVERK - TEANAZ Hunter

Fixed Blade, Full Tang, 4" Blade, 80CrV2 Carbon Steel, Zebra Wood Handle Scales, Thong Hole w/Lanyard, Carbon Fiber Liners, 7 3/8" OAL, New from maker. Hand-rubbed satin finished high carbon steel blade with intricate laser engraving on both sides of the blade and along the tang. Maker's logo and name on bottom tang. Distinctive zebra wood handle scales. Brown hybrid kydex/leather sheath has maker's stamp on reverse side. Comes with Certificate of Authenticity and a small container of Moommix wax.

KLSP92508 ————— \$ 875.00



#### Keith Murr - Damascus Hunter

Fixed Blade, Hidden Tang, 3 3/4" Blade, Damascus Steel, Sambar Stag Handle, Nickel Silver Guard, Aluminum Butt Cap, 8 1/4" OAL, New from maker. Alabama Damascus blade with maker's name stamped on the obverse side and jimping on the spine. Polished guard and butt cap. Very nice stag handle with black fiber and rosewood spacers. Made-to-fit brown leather sheath from the maker.

KLSP92511 ————— \$ 655.00





#### Keith Murr - Damascus Hunter

Fixed Blade, Hidden Tang, 3 7/8" Blade, Damascus Steel, Sambar Stag Handle, Nickel Silver Guard, Aluminum Butt Cap, 8" OAL, New from maker. Alabama Damascus blade with maker's mark stamped on obverse side and jimping on spine. Red and black fiber with turquoise spacers compliment the stag round handle. Made-to-fit brown leather sheath from the maker.

KLSP92513 \$ 655.00



#### Randall Knives - Model 1 - Fighter

Fixed Blade, Hidden Tang, 6" Blade, 440B Stainless, 55-56 Rc., Black Micarta Handle, Double Brass Hilt, Red/Wht/Blue Spacers, 10 1/2" OAL, Pre-owned. Not used or carried. Mirror polished blade with sharpened top edge. Original brown leather sheath with sharpening stone. Ships in zippered case.

KLSP92520 \$ 720.00



#### Randall Knives - Model 2 - Fighting Stiletto

Fixed Blade, Finger Grooved Handle, Hidden Tang, 6" Blade, Double-Edged, 440B Stainless, 55-56 Rc., Stacked Leather Handle, Nickel Silver Hilt, Duraluminum Butt Cap, 10 7/8" OAL, Pre-owned. Not used or carried. Mirror polish blade is double-edged. Reduced hilt. Finger grooved handle. Thong hole with paracord lanyard. Dark brown leather sheath with sharpening stone in pocket. Ships in zippered case with original Randall paperwork.

KLSP92522 \$ 745.00



#### Red St. Cyr - Bowie

Fixed Blade, Contoured Handle, Hidden Tang, 10 7/8" Blade, 5160 Carbon, Walnut Handle, Stainless 'S' Guard, 16 3/8" OAL, Pre-owned. Not used or carried. Mirror polish blade with 'St. Cyr' on obverse blade and 'JS' journeymen's mark designation on reverse blade. There is a tiny rust spot on each side of the blade at the guard connection. The collar has a small ding on the obverse side. Nicely figured wood handle. No sheath. Ships in zippered case.

KLSP92529 \$ 630.00



#### James Behring, Jr. - Fighter

Fixed Blade, Hidden Tang, 7" Blade, Unknown Steel, Stag Round Handle, Brass Double Hilt, Compass in Butt, Red/Wht/Blk Spacers, 11 7/8" OAL, Pre-owned. Not used or carried. Satin finished blade has maker's mark on obverse side. Nice stag handle. Owner has matched it to a black leather Ka-Bar sheath. Ships in James Behring Jr. zippered case.

KLSP92532 \$ 520.00



#### Chris Reeve - Kathathu - Rare Find

Fixed Blade, 7 1/2" Blade, Limited to 100 Pieces, A-2 Tool Steel, 55-57 Rc., One Piece A-2 Blade & Handle, Integral Hilt, Aluminum Butt Cap, 12 1/2" OAL, Pre-owned. Not used or carried. Limited edition collectible, Certificate of Authenticity signed by Chris Reeve is dated 7/19/2001. Crafted from a solid piece of A-2 steel, it features an astounding triple grind. The handle has a removable butt cap that allows survival items to be stored. Marked 'CR' on obverse and 'U.S.A.' on reverse ricasso. Paracord in thong hole. NO SHEATH. Comes in original box with CofA, as well as a signed card with knife details.

KLSP92533 \$ 3600.00



#### Chris Reeve - Kathathu - LTD 50 piece - 2000

Fixed Blade, 9" Blade, A-2 Tool Steel, 55-57 Rc., One Piece A-2 Blade & Handle, Integral Hilt, Aluminum Butt Cap, 13 3/4" OAL, Pre-owned. Not used or carried. Limited edition collectible. Crafted from a solid piece of A-2 steel, it features a triple grind (hollow grind repeated evenly three times). Checkered handle with removable butt cap that allows survival items to be stored. Marked 'CR' on obverse and 'MADE IN U.S.A.' on reverse ricasso. Paracord in thong hole. Comes with original black leather sheath with paracord tie-down. Ships in original box with signed card stating completion date of June 29, 2000.

KLSP92534 \$ 4950.00



#### Chris Reeve - Al Mar - LTD Edition 101/200

Fixed Blade, 7 1/2" Blade, A-2 Tool Steel, 55-57 Rc., One Piece A-2 Blade & Handle, Integral Hilt, Aluminum Butt Cap, 12 1/2" OAL, Pre-owned. Not used or carried. Collaboration between Chris Reeve and Al Mar. Crafted from solid piece of A-2 steel. Blade is marked with both Chris Reeve and Al Mar logo and is numbered '101-200'. Reverse blade is marked 'MADE IN USA'. Checkered handle with removable butt cap that allows survival items to be stored. Paracord in thong hole. Original black leather sheath has both makers' logo. Ships in original box with care paperwork and a signed Certificate of Authenticity stating date of completion of May 11, 1999.

KLSP92535 \$ 1350.00



#### Gaetan Beauchamp - Come and Go Tiger

Fixed Blade, Full Tang, 4 1/2" Blade, Damascus Steel, 59-60 Rc., Water Buffalo Horn Handle, Stainless Bolsters, Brown Micarta Liners, 9 1/4" OAL, Pre-owned. Not used or carried but there is a tiny handling ding on the reverse bolster. Ladder damascus blade. Beautifully scrimshawed tiger by maker is shown sauntering forward on obverse and walking away on reverse. Signed 'Beauchamp '23'. This is an A.G Russell exclusive limited to 100 pieces. Black leather sheath.

KLSP92538 \$ 1170.00

Find More Knives at

**cuttingedge.com®**



#### Randall Knives - Model 7 - Fisherman/Hunter

Fixed Blade, Hidden Tang, 5" Blade, 0-1 Carbon Tool Steel, Stacked Leather Handle, Brass Single Hilt, Duraluminum Butt Cap, Red/Wht/Blue Spacers, 9 1/2" OAL, Pre-owned. Light carry with minimal signs of sharpening. Mirror polish blade with Randall mark on obverse and personalized with original owner's name on reverse. There are a few tiny carbon spots on both sides of blade. The leather handle is in excellent condition with wide spacers. Brown leather HH Heiser sheath with brown button snaps and a gray sharpening stone in pouch. No missing stitching. Great vintage piece.

KLSP92539 \$ 1080.00



#### Randall Knives - Model 2 - Letter Opener

Fixed Blade, Concave Handle, Hidden Tang, 4" Blade, 440B Stainless, 55-56 Rc., Desert Ironwood Handle, Brass Double Hilt, Brass Butt Cap, Black Spacers, Brass Smooth Collar, 7 3/4" OAL, Pre-owned. Never used or carried. Double-edged, satin finish blade. Brass curved hilt and rounded butt cap. Nicely figured ironwood handle. Original brown leather sheath with separate sharpening stone.

KLSP92542 \$ 765.00



#### Randall Knives - Model 4 Randall Knife Society

Fixed Blade, Fighter, Hidden Tang, 8" Blade, 0-1 Carbon Tool Steel, Stag Round Handle, Nickel Slv Dbl Hilt, Duraluminum Butt Cap, Red/Wht/Blue Spacers, 13" OAL, Pre-owned. Not used or carried. Randall Knife Society club knife. Mirror polish finish with Randall logo on obverse and marked 'RKS 856/989' on reverse. Nice stag round handle. Original brown leather sheath has sharpening stone and is stamped with the RKS log on reverse.

KLSP92546 \$ 1350.00



#### Randall Knives - Model 18 - Survival Knife

Fixed Blade, 7 1/2" Blade, 0-1 Carbon Tool Steel, Stainless Steel Tublar Handle, Brass Double Hilt, Crutch Tip Butt Cap, 13 1/4" OAL, Pre-owned. Light carry, no sharpening. Mirror polish blade sawtooth top edge. Brass double hilt has drilled holes. 1" tublar handle is hollow for storing survival items. Easy to remove crutch tip is marked 20 over 1 on end. Some scuff marks on hilt. Brown leather sheath has seven brass rivets and silver snaps, no missing stitching. Two-part gray sharpening stone is in the pocket. Rare find.

KLSP92548 \$ 2700.00



#### Lee McDowell - Hunter

Fixed Blade, Full Tang, 4" Blade, 440C Stainless, Ivory G10 Handle Scales, Thong Hole, Black Liners, Orange G10 Pins, 8 5/8" OAL, New from maker. Light mirror polish blade with thumb notches. Maker's name on obverse and maker's AXE emblem on reverse blade. Brown leather pouch style sheath has light tooling.

KLSP92549 \$ 420.00



#### Deryl Wright - Deluxe Hunter

Fixed Blade, Narrow Tang, 4 3/4" Blade, D2, 60 Rc., Stag Handle, Nickel Silver Guard, Nickel Silver Butt, 9" OAL, New from maker. Mirror polish blade. Hefty stag handle with nickel silver and gold laced coral spacers. Brown leather pouch-style sheath from the maker.

KLSP92550 \$ 580.00



#### Rick Nowland - Dogleg Trapper

Folder, 3" Clip Blade, 3" Wharncliffe Blade, CPM-154 Stainless, Hollow Ground, Antique Stag Handle Scales, 416 SS Bolsters, 416 SS Liners, Stainless Shield, 3 5/8" Closed, New from maker. Satin finish blade with nail nicks. Half-stop and flush all around. Very nice stag scales with shield. 416SS integral bolster/liner. Ships in zippered case.

KLSP92553 \$ 605.00



#### James Mustain - Damascus Lockback

Folder, 3 1/8" Blade, Damascus Steel, Dyed Stabilized Maple Scales, Damascus Bolsters, Titanium Liners, Red Overlay Liners, 4 1/2" Closed, New from maker. Matching damascus blade and bolsters. Nice maple burl handle scales. Brown leather sheath pouch from the maker. Certificate of Authenticity card.

KLSP92554 \$ 585.00



#### Wayne Whittaker - Lockback

Folder, 3" Blade, 440C Stainless, Mammoth Ivory Handle Scales, Damascus Bolsters, Blue Titanium Liners, 4 5/8" Closed, New from maker. Mirror polish blade with nail nick. Mosaic damascus bolsters. Closely matched smooth mammoth ivory scales. Fileworked lockbar. Ships in zippered case.

KLSP92555 \$ 605.00



#### Ricardo Perpina - Fighter

Fixed Blade, Finger Grooved Handle, Full Tang, 8" Blade, 440C Stainless, Black Micarta Handle Scales, Stainless Dbl Hilt, Thong Hole, USMC Mosaic Pin, 13" OAL, New from maker. Mirror polish blade with sharpened top edge. Double stainless hilt with single drilled hole. Substantial micarta handle scales has brass USMC mosaic pin. Dark brown leather sheath with sharpening stone in pouch.

KLSP92564 \$ 645.00





**Ricardo Perpina - Gaucho**

Fixed Blade, Hidden Tang, 9 1/2" Blade, Damascus Steel, Stag Round Handle, Damascus Collar, Nickel Silv Butt Cap, 14 1/2" OAL, New from maker. Damascus blade of 15N20/5160 steel. Hefty stag round handle. Traditional Argentine brown leather gaucho sheath.

**KLSP92566** \_\_\_\_\_ **\$ 580.00**



**Chris Amos - Small Hunter**

Fixed Blade, Hidden Tang, 3 1/4" Blade, 52100 Carbon, Hawaiian Sheep Horn Handle, Nickel Silver Guard, 6 5/8" OAL, Pre-owned. Not used or carried. Satin finish blade. Polished guard. Black, nickel silver and horn spacers. Brown leather sheath. Ships in zippered case.

**KLSP92569** \_\_\_\_\_ **\$ 620.00**



**Ed Fowler - Yearling**

Fixed Blade, Hidden Tang, 3 1/4" Blade, 52100 Carbon, Sheep Horn Handle, Brass Guard, Black Spacers, 6 5/8" OAL, Pre-owned. Not used or carried. Satin finish blade shows nice temper lines. Maker's willow branch is engraved on each side of the guard and his traditional logo is on the obverse blade. Original brown waxed harness leather sheath is included. Ships in zippered case.

**KLSP92570** \_\_\_\_\_ **\$ 1822.00**



**Joel A. Worley - Fighter**

Fixed Blade, Hidden Tang, 6 3/16" Blade, Damascus Steel, Fossilized Walrus Ivory Handle, Stainless Guard, 11" OAL, Pre-owned. Not used or carried. Feather Damascus (1084 & 15N20) shows some dark spots (stored in sheath), with maker's mark on obverse ricasso. Stabilized, carved fossilized walrus ivory handle. There are a few scratch marks on the guard area closest to handle material. Hand-stitched brown leather sheath has an alligator inlay. CANNOT SHIP OUTSIDE U.S.A.

**KLSP92571** \_\_\_\_\_ **\$ 1458.00**



**John Etzler - Engraved Hunter**

Fixed Blade, Tapered Tang, 4 1/8" Blade, Unknown Steel, Stag Handle Scales, Stainless Bolsters, 8 1/2" OAL, Pre-owned. Not used or carried. Mirror polish blade with maker's logo on obverse side. Engraved bolsters are signed 'J. Flannery, Eng.'. There are slight scuff marks on the top of the bolster, very minimal. Nice stag scales. Tooled, brown leather sheath from L. Parsons, Mustang, OK. Ships in zippered case.

**KLSP92573** \_\_\_\_\_ **\$ 1090.00**



**Michael Connor - Hunter**

Fixed Blade, Hidden Tang, 4 5/8" Blade, Carbon Steel, Maple Handle, Nickel Silver Guard, Nickel Silver Butt, 9 1/4" OAL, Pre-owned. Not used or carried. Satin finish blade with maker's name on obverse and 'MS' Master Smith designation on reverse. Colorful maple handle. Comes with tooled leather sheath marked J.F. Keeslar.

**KLSP92577** \_\_\_\_\_ **\$ 1065.00**



**Tim Foster - Takedown Hunter**

Fixed Blade, Narrow Tang, 3 3/4" Blade, Carbon Steel, Maple Wood Handle, Integral Hilt, Stainless Butt, 8 1/2" OAL, Pre-owned. Not used or carried. Satin finish blade with maker's name and "MS" Master Smith designation. Figured maple handle. No sheath.

**KLSP92578** \_\_\_\_\_ **\$ 530.00**



**Dickie Robinson - Fancy Hunter**

Fixed Blade, Narrow Tang, 4" Blade, Carbon Steel, Desert Ironwood Handle Scales, Stainless Guard, 8 1/4" OAL, Pre-owned. Not used or carried. Satin finish blade has maker's name on obverse and 'MS' Master Smith designation on reverse. Engraved guard. Two-tone ironwood scales. No sheath.

**KLSP92579** \_\_\_\_\_ **\$ 475.00**



**David Anders - Fighter**

Fixed Blade, Narrow Tang, 6 3/4" Blade, Carbon Steel, Ebony Handle, Nickel Silver Hilt, 11 1/4" OAL, Pre-owned. Not used or carried. Satin finish blade by current Master Smith. This knife was used for Journey Smith test. Double hilt. Dark wood handle. No sheath.

**KLSP92581** \_\_\_\_\_ **\$ 530.00**



**Rockstead Knives - SAI-T Japanese Custom**

Folder, 3 1/4" Blade, ZDP-189 Stainless, 67 Rc., Coated Titanium Handle Scales, Thong Hole, Linerlock, 4 1/4" Closed, Pre-owned. Not used or carried. Mirror polish tanto "Honzukuri" blade (both sides have a convex grind). DLC Prism coated titanium handles scales have a terraced effect. Strong, solid linerlock. Black leather pouch. Individually serial numbered and comes with a certificate of authenticity. Ships in original wooden box with chamois cloth.

**KLSP92582** \_\_\_\_\_ **\$ 1185.00**

*All fixed blade knives include a sheath  
unless otherwise stated.*

*Do you have knives you'd like  
to sell in our catalog?  
E-mail Debbie at [ce\\_info@cuttingedge.com](mailto:ce_info@cuttingedge.com)*





#### Chris Reeve Knives - Neil Roberts Warrior Knife

Fixed Blade, Full Tang, 6 1/4" Blade, S30V Stainless, 55-57 Rc., Black Canvas Micarta Scales, 11 1/4" OAL, Pre-owned. Not used or carried. Completion date 4/6/05, designed by Bill Harsey and dedicated to the memory of the first SEAL to lose his life in action since 1989 during Operation Acaconda, Afghanistan 2002. Drop point, hollow ground black coated blade finish. Blade is marked "Neil Roberts - BUD/S Class 184". Not serialized (184 were numbered for the Navy Seal community), but the knife is identical. Includes Tan SpecOps nylon sheath with original box and documentation.

KLSP92583 \$ 585.00



#### M. Larsen - Integral Hunter

Fixed Blade, Narrow Tang, 4" Blade, D2, Stag Round Handle, Integral Guard, Stainless Butt, 8 3/4" OAL, Pre-owned. Not used or carried. Mirror polish blade with maker's logo on obverse blade. Nice stag round with black, stainless and turquoise spacers. Brown leather lightly tooled sheath included.

KLSP92586 \$ 445.00



#### Wayne Clay - Loveless Drop Point Hunter

Fixed Blade, Full Tapered Tang, 4 1/8" Blade, ATS-34 Stainless, Desert Ironwood Handle Scales, Stainless Guard, Thong Hole, Red Liners, 8 3/4" OAL, Pre-owned. Not used or carried. Made in 2009. Mirror polish finish on obverse blade with maker's logo. There are some light storage marks on the guard. Original brown leather sheath from the maker has a small stain on the front but otherwise great condition. Ships in zippered case.

KLSP92591 \$ 650.00



#### Wayne Clay - Loveless Drop Point Hunter

Fixed Blade, Full Tapered Tang, 4 3/8" Blade, ATS-34 Stainless, Green Micarta Handle Scales, Stainless Guard, Thong Hole, Red Liners, 8 5/8" OAL, Pre-owned. Not used or carried. Mirror polish finish on blade with maker's log on obverse side. Light storage mark on guard. Original brown leather sheath from maker. Ships in zippered case. Made in 2012.

KLSP92592 \$ 595.00



#### Wayne Clay - Model 4 Folding Hunter

Folder, Lockback, 3 1/4" Blade, ATS-34 Stainless, Aluminum Frame w/Stag Onlays, Aluminum Bolsters, Thong Hole, Aluminum Liners, 4 3/4" Closed, Pre-owned. Not used or carried. Mirror polish blade with deep nail nick and maker's logo on obverse. Integral bolsters and liners with closely matched stag scales. Stainless lockbar and micarta spacer. Made in 1990. Ships in velvet pouch.

KLSP92593 \$ 625.00



#### Wayne Clay - Ross Seyfried Hunter Set

Folder, 3 1/2" Skinner Blade, 3" Caping Blade, ATS-34 Stainless, Aluminum Frame w/Bufalo Horn, Aluminum Bolsters, Thong Hole, Aluminum Liners, 5" & 4" Closed, Pre-owned. Not used or carried. Set was made in 1994 and was a collaboration between the maker and Ross Seyfried, professional guide and hunter & writer for Guns & Ammo. Set is serial number 38. Mirror polish blades with nail nick and maker's logo and serial number on obverse side. Natural buffalo horn handle scales. Each ship in a velvet pouch.

KLSP92594 \$ 850.00



#### W.C. "Bill" Davis - Lockback

Folder, 2 3/4" Blade, ATS-34 Stainless, Aluminum Frame w/Stag Scales, Aluminum Bolsters, Thong Hole, Aluminum Liners, Micarta Spacer, 4" Closed, Pre-owned. Not used or carried. Mirror polish blade has nail nick and maker's logo on obverse. Nice stag scales. Ships in zippered case. Made in late 80's to early 90's.

KLSP92595 \$ 500.00



#### W.C. "Bill" Davis - Large Folding Hunter Lockback

Folder, 3 1/4" Blade, ATS-34 Stainless, Aluminum Frame w/Stag Scales, Aluminum Bolsters, Thong Hole, Aluminum Liners, 4 3/4" Closed, Pre-owned. Not used or carried. Made in late 80's-early 90's. Mirror polish blade with nail nick and maker's logo on obverse side. Very nice, closely matched stag scales. Carbon fiber back spacer. Stainless lockbar. Ships in zippered case.

KLSP92596 \$ 550.00



#### Rick Nowland - Damascus Slipjoint

Folder, 2 3/4" Blade, Damascus Steel, Integral Damascus Frame, Damascus Bolsters, Damascus Liners, 3 1/2" Closed, New from maker. Forged entirely by the maker. Blade and backspring is made of made of 1084/15N20 twist pattern. Bolster and liner are integral and made of 203 and mild steel. Figured desert ironwood scales. Comes with an open-top pocket pouch and ships in zippered case.

KLSP92597 \$ 750.00



#### William Henry Knives - Model B30 - TCD - GenTac

Folder, Buttonlock, 3" Blade, Damascus Steel, 58-59 Rc., Aerospace Titanium Frame, Carbon Fiber Inlay, 3 7/8" Closed, Pre-owned, mint condition. Hand-forged 'Dot Matrix' damascus by Rob Thomas. Blade has WH logo with 'Stainless Damascus 1230-0493' on the obverse blade. The serial number '211/500' is located on the reverse rim of the frame. Titanium frame has a solid basketweave carbon fiber inlay (both sides). Blue sapphire gemstones are inset in 18K gold bezels on the thumbstud and button lock. Blue anodized titanium reversible pocket clip. Original Certificate of Authenticity and wooden box. Ships in WH black cardboard box.

KLSP92598 \$ 900.00





#### William Henry Knives - Model B11 TIW - Persian

Folder, 2 1/4" Blade, Damascus Steel, 67 Rc., Titanium Frame w/Ironwood, Sterling Silver Bail, 3 1/2" Closed w/Bail, Pre-owned. Not used or carried. 'Wave' ZDP-189 core damascus. Citrine stones in thumb stud and button lock. Titanium frame with figured ironwood inlays. Blade is marked with maker's logo and '811-0194'. Limited to 500, the frame is marked '025/500'. Certificate of Authenticity. Has original wooden box with an ostrich ClipCase. Ships in a black WH box.

KLSP92599 \$ 850.00



#### William Henry Knives - B09 TIB - Kestrel - ButtonLock

Folder, 2" Drop Point Blade, ZDP-189 Stainless, 66-67 Rc., Titanium Frame, Sterling Silver Bail, Ironwood Inlays, 3" Closed w/Bail, Pre-owned. Not used or carried. ZDP-189 core, supported by 420SS on each side. Titanium frame with integrated bolsters has desert ironwood inlays on each side. Citrine stones in thumb stud and button lock. Sterling silver bail with braided leather lanyard with beads. Blade is marked with WH logo and serial number '99-0003'. Frame is marked '102/500'. Ostrich leather WH ClipCase. Brown wooden box and ships in WH Studios black cardboard box. No Certificate of Authenticity.

KLSP92600 \$ 575.00



#### William Henry Knives - Model B09 - Kestrel - LTD 25

Folder, 2" Blade, Damascus Steel, 67 Rc., Damascus Frame w/Mammoth Inlay, Damascus Bolsters, Sterling Silver Bail, Damascus Liners, 3" Closed w/Bail, A.G. Russell custom, completed 7/10/06 and numbered 01/25. Stainless 'Ribbon Lace' damascus blade by Mike Norris. The frame and integrated bolsters are 'Cheetah' damascus by D. Ealy. Beautiful and closely matched mammoth bark handle inlays and also insets in button lock and thumb stud. Sterling silver bail with braided leather lanyard and metal and mammoth beads. Blade has WH logo and serial number '59-0367'. Certificate of Authenticity. Comes with brown leather WH ClipCase. Ships in original wooden box with WH medallion in cardboard box.

KLSP92601 \$ 995.00



#### Jack Roberts - 'Tiger Eyes' Drop Point Hunter

Fixed Blade, Full Tang, 3 9/16" Blade, 440C Stainless, 57-59 Rc., Ivory Micarta Handle Scales, Brass Single Guard, Red Liners, 8" OAL, Pre-owned. Not used or carried. Custom-made in 2008. The hollow ground blade has a mirror polish finish with the maker's logo on obverse. The ivory micarta handle has been scrimshawed by the maker's wife Barbara Roberts (signed BR) featuring intense tiger eyes. Very detailed. Brown leather pouch-style sheath has maker's logo on front. Made in 2008.

KLSP92602 \$ 1200.00



#### Robert C. Combs - Hunter

Fixed Blade, Stick Tang, 4" Blade, D2, 61-62 Rc., Contoured Ivory Rucarta Handle, 303 Stainless Guard, 8 3/4" OAL, New from maker. Mirror polish blade has maker's logo on reverse and 'D2' on obverse side. White and red G-10, along with ironwood spacers compliment the ivory rucarta handle. Brown leather pouch-style sheath.

KLSP92603 \$ 500.00



#### Randall Knives - 3-Piece Stag Carving Set

Misc, Hidden Tang, 9" Blade, 440B Stainless, 55-56 Rc., Stag Round Handle (each piece), Nickel Silver Hilt, Red/Wht/Blue Spacers, 13 3/4" OAL (Knife), New. Model 6 set. Sure to become a family heirloom. Mirror polish blade. Fork tines measure 4 1/2" with OAL of 11". Reduced hilt. Includes sharpening steel with OAL 14 3/4". Ships in original 3 compartment lined felt case with 'Randall Knives Orlando, FLA' patch. Handwash only.

KLSP92604 \$ 795.00



#### Robert Young - City Knife

Fixed Blade, Full Tapered Tang, 2 1/2" Blade, CPM-154 Stainless, 60 Rc. Cyro-Treat, Mammoth Bark Ivory Scales, Stainless Bolsters, Thong Hole, Black Liners, 6 1/8" OAL, New from maker. Mirror polish blade and hardware. Jumping on underside of bolsters. Closely matched mammoth bark handle scales. Maker's logo on obverse blade with serial number '492' etched on reverse ricasso. Brown leather pocket sheath has maker's logo and is signed with matching serial number on reverse side.

KLSP92605 \$ 750.00



#### Robert Young - Green River Skinner

Fixed Blade, Full Tapered Tang, 3 1/2" Blade, CPM-154 Stainless, 60 Rc. Cyro-Treat, Ram's Horn Handle Scales, Stainless Guard, Thong Hole, Black Liners, 7 13/16" OAL, New from the maker. Mirror polish blade and hardware. Maker's logo on obverse blade with serial number '496' on reverse ricasso. Striking ram's horn handle scales. Brown leather sheath is signed by maker with matching serial number and is fitted to the knife.

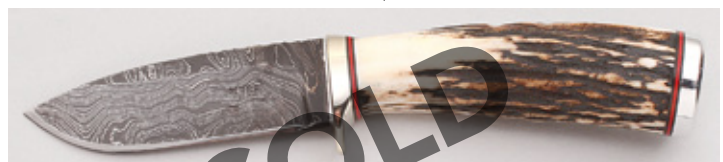
KLSP92606 \$ 850.00



#### Robert Young - Big Bear Sub-Hilt Fighter

Fixed Blade, Full Tapered Tang, 8 15/16" Blade, CPM-154 Stainless, 60 Rc. Cyro-Treat, Mammoth Crosscut Tusk Scales, Stainless Dbl Hilt, Stainless Thong Hole, Red Liners, 13 3/4" OAL, New from maker. Mirror polish blade with maker's name and logo on obverse side with serial number '499' on reverse ricasso. Highly polished hilt and sub-hilt. Perfectly matched crosscut mammoth handle scales. Brown leather sheath from the maker is signed and made-to-fit the knife and also is signed with matching serial number.

KLSP92607 \$ 2500.00



#### Keith Murr - Damascus Hunter

Fixed Blade, Hidden Tang, 3 7/8" Blade, Damascus Steel, Stag Round Handle, Nickel Silver Guard, Aluminum Butt Cap, Black & Red Spacers, 8 3/8" OAL, New from maker. Alabama damascus blade has maker's name stamped on obverse side and light filework on spine. Polished guard and butt cap. Fiber spacers. Very nice stag handle. Made-to-fit brown leather sheath from the maker.

KLSP92608 \$ 700.00





#### Keith Murr - Damascus Clip Point Hunter

Fixed Blade, Hidden Tang, 4 1/2" Blade, Damascus Steel, Stag Round Handle, Nickel Silver Guard, Aluminum Butt Cap, 8 11/16" OAL, New from maker. Alabama Damascus blade with maker's mark stamped on obverse side and jimping on the spine. Red and black fiber spacers along with a wide band of turquoise spacer complements the nice stag handle. Made-to-fit brown leather sheath from the maker.

KLSP92609 \_\_\_\_\_ \$ 725.00



#### Keith Murr - Stubby Damascus Hunter

Fixed Blade, Hidden Tang, 3 7/8" Blade, Damascus Steel, Stag Round Handle, Nickel Silver Guard, Aluminum Butt Cap, Red & Black Spacers, 7 7/8" OAL, New from maker. Alabama Damascus blade with maker's logo on obverse with jimping on the spine. Very nice stag round handle with fiber spacers. Made-to-fit brown leather sheath from the maker.

KLSP92610 \_\_\_\_\_ \$ 700.00



#### Keith Murr - Hunter Drop Point Hunter

Fixed Blade, Full Tang, 3 1/2" Blade, D2, Walnut Handle Scales, Thong Hole w/ Lanyard, Dark Green Liners, 8" OAL, New from maker. Mirror polish blade with maker's logo on obverse blade with jimping on spine. Nicely figured walnut handle scales. Mosaic pins. Braided leather lanyard. Made-to-fit brown leather sheath from the maker.

KLSP92611 \_\_\_\_\_ \$ 500.00



#### Shiva Ki - Mercenary - Fighter

Fixed Blade, Full Tapered Tang, 8 1/4" Blade, Forged High Carbon Steel, Jigged Buffalo Horn Scales, Nickel Silver Hilt, Ni Slv Rear Bolsters, 14 1/2" OAL, Pre-owned. Recurve double edge forged blade has been clay tempered. Extremely sharp. Maker's name and logo on obverse side. Nickel silver double hilt and rear bolsters. Thong hole. Buffalo horn handle scales. Dark brown leather sheath. Ships in zippered case.

KLSP92612 \_\_\_\_\_ \$ 2500.00



#### BlackJack Knives - Tom Maringer Vorpall Sword

Fixed Blade, Full Tang, 17 1/2" Blade, 1095 Carbon Steel, Black Micarta Handle Scales, 24" OAL, Pre-owned. Not used or carried. Sword has been stored in sheath. There are a few visible small carbon spots on each side of the mirror polished blade. Marked 'Maringer Vorpall' with dragon image on obverse with the BlackJack Classic blades logo on reverse. Original black leather scabbard. Rare find.

KLSP92613 \_\_\_\_\_ \$ 995.00



#### Deryl Wright - Hunter

Fixed Blade, Tapered Tang, 3 1/2" Blade, CTS-XHP Carpenter Steel, 60.5 Rc. Cyro-Treat, Stag Handle Scales, Nickel Silver Guard, Thong Hole, Red Liners, 8" OAL, New from maker. Mirror polish blade with maker's logo on obverse side and "CTS-XHP" on reverse. Beautiful, well-matched stag handle scales. Made-to-fit brown leather sheath from the maker.

KLSP92614 \_\_\_\_\_ \$ 850.00



#### Deryl Wright - Classic Hunter

Fixed Blade, Tapered Tang, 3 5/8" Blade, CTS-XHP Carpenter Steel, 60.5 Rc. Cyro-Treat, Ram's Horn Handle Scales, Nickel Silver Guard, Thong Hole, Yellow Liners, 8 1/4" OAL, New from maker. Mirror polish blade with maker's logo on obverse and 'CTS-XHP' on reverse side. Closely matched ram's horn scales with oyster shell spacer. Made-to-fit brown leather pouch-style sheath from the maker.

KLSP92615 \_\_\_\_\_ \$ 795.00



#### Deryl Wright - Classic Hunter

Fixed Blade, Tapered Tang, 3 3/4" Blade, CTS-XHP Carpenter Steel, 60.5 Rc. Cyro-Treat, Desert Ironwood Handle Scales, Nickel Silver Guard, Thong Hole, Red Liners, 8" OAL, New from maker. Mirror polish blade with maker's logo on obverse and 'CTS-XHP' on reverse. Highly figured ironwood scales. Made-to-fit brown leather pouch-style sheath from maker.

KLSP92616 \_\_\_\_\_ \$ 800.00



#### Deryl Wright - Classic Hunter

Fixed Blade, Full Tapered Tang, 3 3/4" Blade, CTS-XHP Carpenter Steel, 60.5 Rc. Cyro-Treat, Mammoth Ivory Handle Scales, Nickel Silver Guard, Thong Hole, Red Liners, 8 1/8" OAL, New from maker. Mirror polish blade with maker's logo on obverse and 'CTS-XHP' on reverse side. Smooth, matched mammoth ivory scales. Made-to-fit brown leather pouch-style sheath from the maker.

KLSP92617 \_\_\_\_\_ \$ 1250.00



#### Deryl Wright - Big Game Hunter

Fixed Blade, Tapered Tang, 4 1/4" Blade, CTS-XHP Carpenter Steel, 60.5 Rc. Cyro-Treat, Black Ram's Horn Handle Scales, Nickel Silver Guard, Red Liners, 8 5/8" OAL, New from maker. Mirror polish blade had maker's logo on obverse and 'CTS-XHP' on reverse side. Natural horn handle scales. Made-to-fit brown leather pouch-style sheath from the maker.

KLSP92618 \_\_\_\_\_ \$ 695.00

Find More Knives at  
**cuttingedge.com®**





#### Deryl Wright - Lile-O-Type

Fixed Blade, Full Tang, 3" Drop Point Blade, CTS-XHP Carpenter Steel, 60.5 Rc. Cyro-Treat, Ivory Micarta Handle Scales, Red Liners, 7" OAL, New from maker. Mirror polish blade with maker's logo on obverse ricasso and 'CTS-XHP' on reverse. Finger grooved micarta handle scales. Brown leather sheath with metal clip.

KLSP92619 ————— \$ 500.00



#### Deryl Wright - Elmer Keith Style Hunter

Fixed Blade, Narrow Tang, 5" Blade, 92, CTS-XHP Carpenter Steel, 60.5 Rc. Cyro-Treat, Desert Ironwood Handle, Nickel Silver Guard, Nickel Silver Butt, 10 1/8" OAL, New from maker. Mirror polish blade with maker's logo on obverse and 'CTS-XHP' on reverse. Nicely figured ironwood handle with spacers including wide stag, red, white and yellow fiber as well as nickel silver. Made-to-fit brown leather sheath from the maker.

KLSP92620 ————— \$ 695.00



#### Deryl Wright - Fighter

Fixed Blade, Narrow Tang, 8 1/2" Blade, CTS-XHP Carpenter Steel, 60.5 Rc. Cyro-Treat, Dark Ironwood Handle, Nickel Silver Guard, Nickel Silver Butt, 13 1/2" OAL, New from maker. Mirror polish blade with maker's logo on obverse and 'CTS-XHP' on reverse. Double nickel silver guard. Very dark ironwood handle with nickel silver and red, black and white fiber spacers. Made-to-fit brown leather sheath from the maker.

KLSP92621 ————— \$ 650.00



#### Wayne Whittaker - Damascus Lockback

Folder, 3 1/4" Blade, Damascus Steel, Mammoth Ivory Handle Scales, Damascus Bolsters, Titanium Liners, 4 3/4" Closed, New from maker. Damascus blade has maker's initials 'WW' on obverse side along with a nail nick. Complimentary damascus front and rear bolsters. Filework on lockbar and around the entirety of the liners. Stabilized, colorful mammoth ivory scales. Ships in zippered pouch.

KLSP92622 ————— \$ 900.00



#### Wayne Whittaker - Lockback

Folder, 3 1/2" Blade, 440C Stainless, Mammoth Tooth Handle Scales, Damascus Bolsters, Titanium Liners, 4 1/2" Closed, New from maker. Mirror polish blade with nail nick and maker's initials 'WW' on obverse ricasso. Mosaic damascus bolsters. Colorful and well-matched mammoth tooth scales. Filework on lockbar with hammered liners. This in zippered pouch.

KLSP92623 ————— \$ 900.00



#### Wayne Whittaker - Damascus Lockback

Folder, 3 1/4" Blade, Damascus Steel, Mammoth Ivory Handle Scales, Damascus Bolsters, Blue Titanium Liners, 4 1/2" Closed, New from maker. Damascus blade has nail nick and maker's initials 'WW' on obverse side. Mosaic damascus bolsters. Textured mammoth ivory scales. Blue anodized titanium liners have filework all around. Filework on lockbar. Ships in zippered pouch.

KLSP92624 ————— \$ 950.00



#### J.C. Provost - Hunter

Fixed Blade, Tapered Tang, 5 1/4" Blade, CPM-154 Stainless, Blue Mammoth Ivory Scales, Stainless Guard, Thong Hole, 10" OAL, New from maker. Mirror polish blade with maker's mark on reverse blade. 416 SS guard. Stabilized blue mammoth ivory handle scales are closely matched. Very nice brown leather pouch-style sheath from the maker. Ships in maker's cardboard box.

KLSP92625 ————— \$ 750.00



#### J.C. Provost - Hunter

Fixed Blade, Tapered Tang, 4 7/8" Blade, CPM-154 Stainless, Red Mammoth Tooth Scales, Stainless Guard, Thong Hole, White Liners, 9 1/2" OAL, New from maker. Mirror polish blade with maker's mark on reverse side. 416 SS guard. Stabilized red mammoth tooth handle scales are closely matched. Brown leather pouch-style sheath from the maker. Ships in maker's cardboard box.

KLSP92626 ————— \$ 750.00



#### William Henry Knives - B09 Red River Kestrel

Folder, 2" Blade, 1084 High Carbon Steel, 'Wave' Mokume Frame, Sterling Silver Bail, Wood Inlay, 3" Closed (w/bail), Pre-owned. Never used or carried. Date of completion was 4/20/22. WH exclusive 'Wave' damascus with extra strong VG-10 core. Beautiful 'Wave' mokume frame compliments the orange spalted beechwood inlay. Smoky quartz gemstones in thumbstud and button lock. Leather lanyard with sterling silver beads. WH logo on blade and serial number 014/250 is on the frame. Brown leather WH ClipCase. Original black wood display box. Ships in WH black cardboard box with 25th Anniversary sticker.

KLSP92627 ————— \$ 1050.00



#### William Henry Knives - B05 META Monarch Button Lock

Folder, 2 5/8" Blade, Damascus Steel, Wave Mokume Handle Scales, Sterling Silver Bail, Carbon Fiber Inlay, 3 3/8" Closed w/Bail, Pre-owned. Not used or carried. Date of completion was 7/21/22. Hand-forged 'Raindrop' damascus blade by Mike Norris. Colorful heat-treated 'Wave' mokume handle scales have a black carbon fiber inlay. Button lock and thumb stud are set with blue iolite gemstones. Leather lanyard with sterling silver beads. Black WH ClipCase. Certificate of Authenticity. Original black wooden display box. Serial number 025/250 on handle with WH logo on blade. Ships in WH cardboard box.

KLSP92628 ————— \$ 1150.00

*All fixed blade knives include a sheath  
unless otherwise stated.*



#### William Henry Knives - B12 Shock II Spearpoint

Folder, 3" Blade, Damascus Steel, Aerospace-Grade Titanium Frame, Sterling Silver Bail, 4 1/4" Closed w/Bail, Pre-owned. Not used or carried. Date of completion was 3/16/23. Serial number 006/100 (on frame). WH signature 'Copper Wave' blade has a VG-5 core. Titanium frame with spectacular 'hybrid' of natural wood and colored resin. Button lock and thumb stud are set with spinel gemstones. Leather lanyard with sterling beads. Certificate of Authenticity. Black leather WH ClipCase. Original wooden box and ships in WH cardboard box.

KLSP92629 ————— \$ 1150.00



#### William Henry Knives - B04 Pikatti - Summer Rain

Folder, Limited to 50 Pieces, 2" Blade, Damascus Steel, Aerospace-Grade Titanium Frame, Sterling Silver Bail, Beech Wood Inlays, 2 3/4" Closed w/Bail, Pre-owned. Not used or carried. Date of completion was 10/29/20. Serial number '07/50' (on frame). Raindrop damascus steel hand forged by Mike Norris. Titanium frame has inlays of orange spalted beechwood. Leather lanyard with sterling silver beads. WH brown leather ClipCase. Citrines are set in the thumb stud and button lock. Original wooden display box with Certificate of Authenticity. Ships in WH cardboard box.

KLSP92630 ————— \$ 650.00



#### William Henry Knives - B11 Persian Curve Button Lock

Folder, 2 1/2" Blade, Damascus Steel, 24K Gold Koftgari Handle Frame, Sterling Silver Bail, 3 1/2" Closed w/Bail, Pre-owned. Not used or carried. Serial number '24/25' of Limited Edition. Completion date was 2/16/22. Copper Wave Damascus blade has an extra strong core of VG-5. Beautiful koftgari frame. Fine citrine gemstones in thumb stud and button lock. Leather lanyard with sterling beads. Brown WH ClipCase. Original wooden display box with Certificate of Authenticity. Ships in WH cardboard box.

KLSP92631 ————— \$ 1550.00



#### William Henry Knives - B11 Persian Autumn Wave

Folder, Limited Edition of 10, 2 1/2" Blade, Damascus Steel, Wave Mokume Handle Frame, Sterling Silver Bail, Mammoth Tooth Inlay, 3 1/2" Closed w/Bail, Pre-owned. Not used or carried. Serial number '07/10' on handle. Completion date was 9/15/2020. Copper Wave Damascus blade with VG-5 core. Heat-colored 'Wave Mokume' frame with Wooly Mammoth tooth inlays. Citrines are set in button lock and thumb stud. Leather lanyard with sterling beads. Exquisite. Brown leather WH ClipCase. Original wooden box with Certificate of Authenticity. Ships in WH cardboard box.

KLSP92632 ————— \$ 1550.00



#### John H. Davis - Dress Tactical Folder

Folder, 3 5/8" Blade, Damascus Steel, Mammoth Ivory Handle Scales, Damascus Bolsters, Blue Titanium Liners, 5" Closed, Pre-owned. Not used or carried. Silver Streak Damascus made of 109 5/15N20/Nickel. Matching damascus bolsters. Closely matched mammoth ivory scales. Blue anodized titanium liners and spacers. Ball bearing pivot. Linerlock with thumb stud. Ships in padded pouch.

KLSP92633 ————— \$ 1200.00



#### John H. Davis - Dress Tactical Linerlock

Folder, 3 5/8" Blade, Damascus Steel, Desert Ironwood Handle Scales, Damascus Bolsters, Titanium Liners, 5" Closed, Pre-owned. Not used or carried. Silver Streak Damascus made of 109 5/15N20/Nickel steels. Matching damascus bolsters. Colorful desert ironwood scales. Blue anodized titanium liners and spacers. Thumb stud. Ball bearing pivot. Ships in padded pouch.

KLSP92634 ————— \$ 1050.00



#### Ken Steigerwalt - Slipjoint - Coke Bottle

Folder, 3" Blade, ATS-34 Stainless, Stainless Frame w/Stag Inlay, Stainless Bolsters, Amber Stag Inlays, 4" Closed, Pre-owned. Not used or carried. Hand-rubbed satin finish blade with nail nick. Pinched bolsters on stainless frame with amber stag inlays. Maker's name on inside spring. Nice fit and finish. Ships in zippered pouch.

KLSP92635 ————— \$ 800.00



#### Ken Steigerwalt - Gentleman's Dress Lockback

Folder, 3" Blade, Damascus Steel, Mother-of-Pearl Handle Scales, Nickel Silver Bolsters, Nickel Silver Liners, 3 7/8" Closed, Pre-owned. Not used or carried. Ladder damascus blade with nail nick. Nickel silver frame has scalloped bolsters, filework and mother-of-pearl scales. Stainless lockbar and spacer have rope filework. Maker's logo on interior lockbar. Ships in snap case.

KLSP92636 ————— \$ 1495.00



#### D.R. Davis - Slipjoint

Folder, 2 1/8" Blade, AEB-L Stainless Steel, Stainless Frame, Stainless Bolsters, Stainless Liners, Pearl Inlays, 2 3/4" Closed, Pre-owned. Not used or carried. Mirror polish blade with nail nick. Half stop. Stainless bolsters. Fiery mother-of-pearl inlays. Ships in maker's zippered case.

KLSP92637 ————— \$ 525.00



#### D.R. Davis - Slipjoint

Folder, 2 1/8" Blade, AEB-L Stainless Steel, Stainless Frame, Stainless Bolsters, Stainless Liners, Sambar Stag Onlays, 2 3/4" Closed, Pre-owned. Not used or carried. Satin finish blade with nail nick. Half stop. Polished stainless bolsters. Pinned stag onlays. Ships in maker's zippered case.

KLSP92638 ————— \$ 525.00



#### John Young - Damascus Hunter

Fixed Blade, Narrow Tang, 4 1/4" Blade, Damascus Steel, Sambar Stag Round Handle, Stainless Guard, Stainless Butt Cap, 8 3/4" OAL, Pre-owned. Not used or carried. Damascus of 15N20/1080/L6. Polished stainless guard and butt cap. Nice stag round handle with black fiber and stainless spacers. Custom tooled brown leather sheath from the maker. Ships in zippered case.

KLSP92639 ————— \$ 695.00





#### Bernard Sparks - Drop Point Hunter

Fixed Blade, Tapered Tang, 3 1/4" Blade, 440C Stainless, Stag Handle Scales, Brass & SS Guard, 7 1/4" OAL, Pre-owned. Not used or carried. Mirror polish blade with maker's name on obverse ricasso and thumb notches on spine. Brass and engraved stainless steel guard. Nicely matched stag scales. Brown leather sheath with lizard inlay. Ships in zippered case.

KLSP92640 ————— \$ 675.00



#### W.D. Pease - Dangler

Fixed Blade, Tapered Tang, 3" Blade, ATS-34 Stainless, Stainless Frame, Carved SS Bolsters, Black & Brass Liners, Faux Tortoise Onlays, 7" OAL, Pre-owned. Not used or carried. Mirror polish blade with maker's name on obverse and 'SWBM36' on reverse (also written on reverse side of sheath). Carved integral bolsters. The faux tortoise handle onlays have wire inlays. Gold-plated screws. Filework along spine and tang. Brown leather dangler sheath is tooled to look like snake scales. Ships in zippered case.

KLSP92641 ————— \$ 1050.00



#### Jimmie Smith - Damascus Stinger

Fixed Blade, Full Tang, 3" Blade, Damascus Steel, Faux Ivory Handle Scales, Red Liners, Scrimshaw by Hand, 5" OAL, Pre-owned. Not used or carried. High polished 400 layer damascus. Resin ivory handle scales with very detailed scrimshaw depictions of a black widow spider on obverse scale and an Australian Redback spider on reverse side. Hand-stitched stingray insert brown leather sheath from the maker (signed on reverse side). Ships in a zippered case. Blade is marked 'Smitty' on obverse side with USA flag on reverse side.

KLSP92642 ————— \$ 650.00



#### Jimmie Smith - Ice Pick Spike

Fixed Blade, Full Tang, 4 3/4" Spike, Damascus Steel, Mastadon Ivory Handle Scales, Red Liners, 6 3/4" OAL, Pre-owned. Not used or carried. High polished 400+ layer rain drop pattern damascus. The edges are not sharpened. Smooth, polished mastadon ivory scales have handmade mosaic pins. Blade is signed 'Smitty' on obverse with a US Flag stamp on reverse side. Florida alligator brown leather sheath from the maker has a metal boot or vest clip. Ships in zippered case.

KLSP92643 ————— \$ 650.00



#### Jerry Hendrix - Boot Knife

Fixed Blade, Tapered Tang, 3 1/2" Blade, ATS-34 Stainless, Tiger Coral Handle Scales, Stainless Bolsters, Red Liners, 6 5/8" OAL, Pre-owned. Not used or carried. Mirror polish blade with maker's name on obverse side. Mosaic pins in bolsters. Closely matched tiger coral scales. Filework around entire tang. Brown leather sheath with crocodile inlays and metal boot clip. Ships in zippered case.

KLSP92644 ————— \$ 595.00



#### Mark (Burr Oak Knives) Nevling - Damascus Dangler

Fixed Blade, Narrow Tang, 3 5/8" Blade, Damascus Steel, Sambar Stag Handle, Mokume Guard, 7 3/4" OAL, Pre-owned. Not used or carried. 1084/Nickel Twist damascus. Contrasting mokume guard. Stag handle with ebony, amber and copper spacers. Brown leather dangler sheath with cognac-colored bison overlay. Certificate of Authenticity states completion date of 9/9/23. Ships in maker's zippered case.

KLSP92645 ————— \$ 595.00



#### Mark (Burr Oak Knives) Nevling - Damascus Hunter

Fixed Blade, Narrow Tang, 4" Blade, Damascus Steel, Ebony w/ Dyed Maple Handle, Bronze Guard, Brass Spacers, 8 1/2" OAL, Pre-owned. Not used or carried. O1/L6/Nickel Twisted Checkerboard Damascus blade is marked 'Burr Oak'. Bronze single guard. Ebony handle with wide dyed & stabilized green maple spacer. Light tooling on black leather sheath. Certificate of Authenticity states date of completion of 9/9/23. Ships in maker's zippered case.

KLSP92646 ————— \$ 675.00



#### John Young - Damascus Hunter

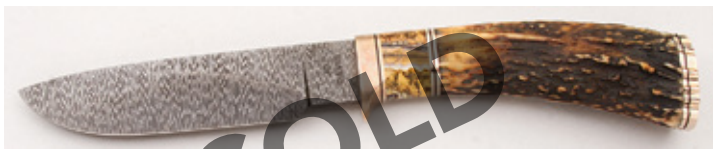
Fixed Blade, Stick Tang, 4 1/2" Blade, Damascus Steel, Stag Round Handle, Stainless Guard, Stainless Pommel, Stainless Collar, 8 7/8" OAL, Pre-owned. Not used or carried. 1080/15N20/L6 damascus with maker's initials "JY" on obverse ricasso. Nice stag handle. Brown tooled leather sheath from the maker. Ships in zippered case.

KLSP92647 ————— \$ 725.00

Find More Knives at

**cuttingedge.com®**

Give us a call at 1-800-965-6433 or  
email Debbie at [ce\\_info@cuttingedge.com](mailto:ce_info@cuttingedge.com)  
for information on how we can help sell your knives.



#### John H. Davis - Damascus Hunter

Fixed Blade, Narrow Tang, 5" Blade, Damascus Steel, Sambar Stag Round Handle, Rose Ni Slv Guard, Rose Ni Slv Butt, 9 7/8" OAL, Pre-owned. Not used or carried. 1095/15N20 Firestorm damascus blade with maker's name on obverse ricasso. Rose nickel silver guard and butt. Black fiber, rose nickel silver and a wide mammoth tooth ivory spacer compliments the sambar stag handle. Brown leather snap sheath has exotic leather inlay. Ships in zippered case.

KLSP92648 ————— \$ 950.00



#### D'Alton Holder - Hunter

Fixed Blade, Hidden Tang, 4" Blade, ATS-34 Stainless, Maple Burl Handle, Stainless Guard, 8 1/2" OAL, Pre-owned. Not used or carried. Mirror polish blade with 'D'Holder Phoenix, AZ' on reverse side. Highly figured maple burl handle is accented with red fiber, stainless, turquoise and a wide band of amber spacers. Brown leather, lightly tooled snap sheath. Ships in zippered case.

KLSP92649 ————— \$ 1150.00



#### Thomas Haslinger - Damascus Hunter

Fixed Blade, Full Tang, 4 1/4" Blade, Damascus Steel, 59 Rc., Mammoth Ivory Handle Scales, Damascus Bolsters, Thong Hole, 8 1/8" OAL, Pre-owned. Not used or carried. Mike Norris stainless ladder damascus blade. Forged mosaic damascus bolsters feature horses and horsehoes (by G. Weinand, MT). Well matched mammoth ivory handle scales. Gold inlaid and carved pins. Filework around spine and tang. Signed T. Haslinger on bottom of bolster. Lined and molded to the knife cowhide sheath. Ships in zippered case.

KLSP92650 ————— \$ 1295.00



#### Craig A. Brosman - Loveless-Style Drop Point Mini

Fixed Blade, Tapered Tang, 3" Blade, CPM-154 Stainless, 60-61 Rc., Natural Canvas Micarta Scales, Red G-10 Liners, 7 1/2" OAL, New from maker. 800 grit satin finish blade with a mirror polished spine. Maker's name on obverse side. Crosscut Westinghouse natural canvas micarts handle scales. Bison leather pouch-style sheath by Aaron Sybrant. Ships with Certificate of Authenticity in maker's zippered case.

KLSP92651 ————— \$ 650.00



#### Craig A. Brosman - Loveless-Style Skinner

Fixed Blade, Tapered Tang, 3 5/8" Blade, CPM-154 Stainless, 60-61 Rc., Vintage Canvas Micarta Scales, Stainless Guard, Stainless Thong Tube, Red G-10 Liners, 7 1/2" OAL, New from maker. 1200 grit satin finish on the blade with a mirror polish spine, tang and guard. Maker's name on obverse side. Vintage green canvas micarta handle scales with cherry red G-10 liners. Brown leather bison pouch-style sheath by Aaron Sybrant. Includes Certificate of Authenticity. Ships in maker's zippered case.

KLSP92652 ————— \$ 750.00



#### Jim Hammond - Skinner

Fixed Blade, Tapered Tang, 3 1/2" Blade, ATS-34 Stainless, Ivory Paper Micarta Scales, Black Liners, 8" OAL, Pre-owned. Not used or carried. Owner ordered from maker in late 70s-early 80s. Mirror polish blade is marked 'Jim Hammond Arab AL' '38-M' (indicating this knife is a modification to his standard model). Thumb notches on spine. Micarta handle scales with nickel silver pins. Brown leather pouch-style sheath. Excellent condition.

KLSP92653 ————— \$ 675.00



#### Unknown Maker - Damascus Hunter

Fixed Blade, Tapered Tang, 3 5/8" Blade, Damascus Steel, White Bone Handle Scales, Mokume Bolsters, 7 5/8" OAL, Pre-owned. Not used or carried. Nicely patterned damascus blade contrasts with mokume bolsters. The bone handle scales have a black horn spacer. The knife is signed 'TE' on bottom tang. No sheath. Ships in zippered case.

KLSP92654 ————— \$ 550.00



#### G.L. Wall - Chute Knife

Fixed Blade, Full Tang, 4 3/4" Blade, 0-1 Carbon Tool Steel, Black Micarta Handle Scales, Stainless Dbl Guard, Thong Hole, Red Liners, 9 3/8" OAL, Pre-owned. Not used or carried. Mirror polish blade finish. Maker's name on obverse ricasso and 'OI' on reverse. Paracord holes in guard. Micarta scales. Brown leather snap sheath from the maker is signed on the back. Ships in zippered case.

KLSP92655 ————— \$ 500.00



#### J.B. Hege - Damascus Hunter

Fixed Blade, Hidden Tang, 4 3/8" Blade, Damascus Steel, Carved Stag Handle, Bronze Guard, 9 1/4" OAL, Pre-owned. Not used or carried. "W" pattern damascus blade is forged by the maker. Bronze single guard. Red, black and brown fiber spacers. 'Running Wolf' is carved into the stag handle. Brown leather sheath has crocodile inlay. Ships in zippered case. Maker's name on obverse ricasso and 'JS' designation on reverse ricasso. Name of the carver is unknown.

KLSP92656 ————— \$ 850.00



#### Nobuhiro (NOBU'S) Yamamoto - Hunter

Fixed Blade, Tapered Tang, 4 1/2" Blade, Unknown Steel, Ironwood Handle Scales, Stainless Guard, Thong Hole, 9 1/4" OAL, Pre-owned. Not used or carried. Mirror polish blade with maker's mark on obverse. High polished guard. Nicely figured ironwood handle scales with a small nick on obverse side near the bottom tang. Well made. No sheath.

KLSP92657 ————— \$ 650.00





#### Dan Harrison - Sub Hilt Speed Fighter

Fixed Blade, 6" Sharpened Top Edge, Hidden Tang, 8 1/2" Blade, 6" Sharpened Top Edge, Unknown Steel, Black Micarta Handle, Brass Hilts, Brass Pommel, 13 1/4" OAL, Pre-owned. Not used or carried. Mirror polish blade has maker's name in cursive on reverse blade. Brass hardware. Black micarta handle. No sheath. Ships in zippered case.

KLSP92658 ————— \$ 600.00



#### D'Alton Holder - Rare Fighter - marked Amarillo

Fixed Blade, Full Tapered Tang w/Filework, 6" Blade, Unknown Steel, Stag Handle Scales, Double SS Guard, Stainless Collar, 10 7/8" OAL, Pre-owned. Not used or carried. Mirror polish blade with sharpened top edge. Reverse ricasso is marked 'D'holder Amarillo, Texas'. Filework on double guard and collar and around entire tang. Tooled brown leather sheath with snap from the maker. Rare find. Ships in D'Holder zippered case.

KLSP92659 ————— \$ 1800.00



#### Stan Fujisaka - Fighter

Fixed Blade, Narrow Tang, 8" Clip Blade, ATS-34 Stainless, Curly Koa Wood Handle, Nickel Silver Guard, 13 5/8" OAL, Pre-owned. Not used or carried. Mirror polish blade with filework on spine and maker's mark on obverse side. Double guard. Black, red, stainless and white spacers compliment the figured koa wood handle. Hand-sewn brown leather sheath from the maker. Ships in zippered case.

KLSP92660 ————— \$ 750.00



#### Randall Knives - Model 12 Sportsman Bowie

Fixed Blade, Hidden Tang, 9" Blade, 0-1 Carbon Tool Steel, Black Micarta Handle, Nickel Slv Dbl Hilt, Nickel Silver Pommel, 13 7/8" OAL, New from maker. Mirror polish blade with sharpened top cutting edge. Nickel silver double hilt and pommel. Black micarta commando handle. Black leather sheath with tie-downs and sharpening stone in pocket. Original Randall paperwork.

KLSP92661 ————— \$ 1095.00



#### Randall Knives - Model 28 Woodsman

Fixed Blade, Narrow Tang, 4 1/2" Blade, 440B Stainless, 55-56 Rc., Green Micarta Handle, Brass Guard, Thong Hole w/Lanyard, 8 7/8" OAL, New. Mirror polish blade with thumb notches. Brass single guard. Brown leather sheath. Original Randall packaging. Separate sharpening stone.

KLSP92662 ————— \$ 650.00



#### Randall Knives - Model 17 - Astro

Fixed Blade, Full Tang, 5 1/2" Blade, 440B Stainless, 55-56 Rc., Black Micarta Handle Scales, Stainless Dbl Hilt, Thong Hole w/Lanyard, 10" OAL, New. Mirror polish blade. Black micarta handle scales are fastened with removable SS bolts and the tang is slotted for storing matches, fish hooks, and other survival items. First designed for the Mercury astronauts. Green paracord lanyard. Dark brown Model C sheath with sharpening stone in the pocket. Paracord tie downs. Original Randall packaging and care instructions.

KLSP92663 ————— \$ 775.00



#### Fox Cutlery - RYU Fighter - By Ken Vehikite

Fixed Blade, Finger Grooved Handle, Full Tang, 5 3/8" Clip Blade, Damascus Steel, 59-61 Rc., Synthetic Ivory Handle Scales, 10 3/4" OAL, New. RYU (stripped down version functionality of a tanto) blade of Balback Damast Herringbone damascus. 3D-machined Elfron Super Stuck ivory with bronze anodized titanium screws. Thumb notches on blade. The black leather sheath has an embossed surface made to look like carbon fiber.

KLSP92664 ————— \$ 895.00



#### Randy Lee - Clip Point Mountain Hunter

Fixed Blade, Narrow Tang, 4 1/8" Blade, CPM-154 Stainless, 60-61 Rc., Desert Ironwood Handle, Nickel Silver Guard, Nickel Silver Pommel, 8 3/8" OAL, New. Mirror polish blade with maker's name on obverse side. Colorful desert ironwood handle has spacers of red and black micarta, nickel silver, Fire Amber and Yellow Amber bands. Beautiful tooled brown leather sheath by Sonja Lee.

KLSP92665 ————— \$ 665.00



#### Gaetan Beauchamp - Lion Scrim Damascus - Limited

Fixed Blade, Full Tang, 4 1/4" Blade, Damascus Steel, 59-60 Rc., Water Buffalo Horn Scales, Stainless Bolsters, Red Liners, 8 7/8" OAL, New, not used or carried. Part of the African Big 5 series that was limited to 25 pieces. Mike Norris Random Pattern Damascus blade. Water Buffalo scales with detailed lion scrimshawed on reverse scale. Signed 'Beauchamp 17'. Mirror polish, stainless engraveable bolsters. Black leather pouch-style sheath.

KLSP92666 ————— \$ 950.00



#### Gaetan Beauchamp - Bald Eagle Linerlock

Folder, 3 1/4" Blade, Damascus Steel, Mammoth Ivory Handle Scales, Stainless Bolsters, Black Liners, 4 3/8" Closed, Produced in 2016 as a limited edition of 15. Never used or carried. Mike Norris Gator Skin Stainless Damascus blade has maker's name on obverse. Thumb stud is set with mammoth ivory inset. Stainless bolsters, frame and liners. Mammoth Ivory scales is polished on reverse and has a Bald Eagle in flight on obverse side. Signed 'Beauchamp 16'. Ships in zippered case.

KLSP92667 ————— \$ 1195.00



#### Bill Cheatham - Skinner

Fixed Blade, Tapered Tang, 2 3/4" Blade, ATS-34 Stainless, Ivory Micarta Handle Scales, Stainless Bolsters, Black Liners, 6 3/8" OAL, Never used or carried. Mirror polish blade with maker's name on obverse. Tiny scuff on obverse bolster. Pristine micarta scales. Brown leather, lightly tooled sheath.

KLSP92668 ————— \$ 500.00



#### Camillus Cutlery - CUDA MAXX 5.5 Folding Bowie

Folder, 5 1/2" Combo Blade, D2, 59-61 Rc., Titanium Handle Frame Lock, Thong Hole, 6 1/4" Closed, Pre-owned. Not used. Mirror polished combo edged blade that is marked 'CUDA MAXX 5.5 - D2 QUIK-FLIK D. RALPH DESIGN U.S.A.' Blade has a couple of minute storage marks. Blue anodized titanium handles (frame). Stainless pocket clip. Made in approximately 2004. Ships in black zippered case.

KLSP92669 ————— \$ 700.00



#### Mamoru Shigeno - Stag Caper

Fixed Blade, Full Tapered Tang, 3 3/8" Blade, ATS-34 Stainless, Stag Handle Scales, Nickel Silver Guard, Thong Hole, 7 3/8" OAL, Pre-owned. Not used or carried. Mirror polish blade with maker's name on obverse side. Well-matched premium stag scales. Brown leather pouch style sheath. Ships in original box from this handmade maker. Impeccable.

KLSP92670 ————— \$ 1300.00



#### Audra Draper - Sheep Horn Hunter

Fixed Blade, Hidden Tang, 2 5/8" Blade, Damascus Steel, Sheep Horn Handle, Brass Single Guard, 6 3/4" OAL, Pre-owned. Not used or carried. Originally purchased in 2015. Damascus is forged from 1080 and 15N20 steels by the first lady ABS Master Smith. Lightly engraved guard. Sheep horn handle has black gasket and sheep horn spacers. Knife has been stored in the brown leather tooled leather sheath. Ships in maker's black padded case.

KLSP92671 ————— \$ 850.00



#### Audra Draper - Sunrise Goat

Fixed Blade, Hidden Tang, 3 1/2" Blade, Damascus Steel, Goat Horn Handle, Brass Single Guard, Turquoise Inlay Butt, 8 1/8" OAL, Pre-owned. Not used or carried. Originally purchased in 2014. Ladder pattern forged damascus blade by ABS first lady Master Smith. Polished brass guard. Textured goat handle has white and black fiber with a large band of turquoise spacers. There is also a turquoise inlay in the butt of the handle. Comes with two brown leather sheaths and ships in a khaki padded pouch.

KLSP92672 ————— \$ 950.00



#### Gil Hibben - Integral Hunter

Fixed Blade, Full Tang, 3 3/4" Blade, Unknown Steel, Jugged Micarta Handle Scales, Stainless Bolsters, Thong Hole, Mosaic Pins, 8 1/8" OAL, Pre-owned. Not used or carried. Mirror polished blade as maker's name and logo on obverse side. Nicely textured black micarta scales with mosaic pins. Includes a black leather sheath with light tooling. Ships in zippered case. Originally purchased in 2015.

KLSP92673 ————— \$ 875.00



#### Luke Swenson - 2 Blade Trapper Slipjoint

Folder, 3 1/4" Clip Blade, 3 5/8" Spey Blade, CPM-154 Stainless, Amber Sambar Stag Scales, Stainless Bolsters, Stainless Liners, Stainless Shield, 4 3/8" Closed, Pre-owned. Not used or carried. Mirror polish blades with nail nicks and makers last name on ricasso of clip blade. Half-stop. Stainless frame with closely matched stag scales. Stainless arrowhead shield. Filework on liners and springs. Ships in maker's zippered pouch.

KLSP92674 ————— \$ 1900.00



#### Joseph Szilaski - Damascus Hunter

Fixed Blade, Hidden Tang, 4 1/2" Blade, Damascus Steel, India Stag Handle, Stainless Guard, Stainless Butt Cap, 8 3/4" OAL, Pre-owned. Not used or carried. Purchased from maker in 2015. Beautifully forged damascus of 1095/15N20 steels. Stainless hardware. Premium stag handle. Brown leather sheath. Ships in zippered case.

KLSP92675 ————— \$ 900.00



#### Ken Middleton - 2 PIECE SET - FANTASY DAGGERS

Fixed Blade, 8" Blade - Dbl Edged, 3 1/8" Blade - Push Dagger, Unknown Steel, Stainless Finger-Groove Handle, 11 3/4" / 5 1/2", Pre-owned. Not used or carried. Purchased in 1997 at Sacramento Knife Show and stored in vinyl case lined with foam. The larger dagger is double-edged with 3 3/4" sickle blades on each side with 18 (appears to be) blue lapis stones inset into handle. The smaller push dagger has a lapis on either side of the handle with filework on the shaft. Ships in original storage case.

KLSP92676 ————— \$ 2500.00

*All fixed blade knives include a sheath  
unless otherwise stated.*





**Max Berger - Integral Push Knife - Fantasy**

Fixed Blade, 5" Dbl Edge Dagger, ATS-34 Stainless, Mammoth Ivory Handle Onlays, 9" OAL, Pre-owned. Not used or carried. Purchased in 1998 at the Bay Area Knife Collectors Association show. Called "The Wicked Lady", this art knife was featured in the October 1998 issue of Knives Illustrated. Filework across the tang with colorful mammoth ivory onlays. There is a sharpened spike on either end. No sheath system. Ships in a padded, nylon case. Impressive.

**KLSP92677 ————— \$ 5000.00**



**Max Berger - Devil's Moon - Art Knife**

Fixed Blade, 7 1/4" Blade, Unknown Steel, Wooly Mammoth Handle Onlays, 11" Wide, Pre-owned. Not used or carried. Purchased at Bay Area Knife Collectors Association show in 2000. Features crescents, one with four finger holes and the closely matched mammoth ivory onlays and the other with the sharpened blade edge. Mirror polish finish. Filework along the edges with eight sharpened tips at the top. Significant art knife.

**KLSP92678 ————— \$ 6000.00**



**Gerber Knives - Gerber Guardian Set - LTD 1000**

Fixed Blade, Hidden Tang, Boot (3 1/2") Blade, II (5") Guardian I (6 3/4"), 440C Stainless, Aluminum w/BLK Coating Handle, 7 1/4"-9 1/8"-11 3/4", Pre-owned. Not used or carried. Rare, mint condition Gerber Guardian set purchased in 1982. Satin finish blades with 'Design by R.W. Loveless (& his signature) and Gerber logo on ricasso. Each reverse blade has serial number '0192'. Double-edged. Aluminum handles with black Armorhide coating. Sharpening bar. Original sheaths. Maple wood storage chest has lift out tray with knives and sharpening bar, while below are five compartments with sheath storage, metal lock closure and leather carrying handle. Box has the Gerber logo with R.W. Loveless (signature) Edition. It also includes era Gerber brochures. Made in U.S.A.

**KLSP92679 ————— \$ 1595.00**



**Randall Knives - Model 6 - Steak Knife**

Fixed Blade, Hidden Tang, 4 1/2" Blade, 440B Stainless, 55-56 Rc., Stag Handle, Nickel Silver Hilt, Red/Wht/Blue Spacers, 9" OAL, Pre-owned. Not used. Mirror polish blade. Reduced nickel silver hilt. Nice stag round handle. No sheath or pouch.

**KLSP92680 ————— \$ 650.00**



**Randall Knives - Model 19 - Bushmaster**

Fixed Blade, Narrow Tang, 5" Blade, 440B Stainless, 55-56 Rc., Black Micarta Handle, Nickel Silver Hilt, Red/Wht/Blue Spacers, 9 5/8" OAL, Pre-owned. Not used or carried. Mirror polish blade with sharpened top edge and thumb notches. Nickel silver hilt with micarta handle. Original brown leather sheath with sharpening stone in pocket. Originally purchased in 1992.

**KLSP92681 ————— \$ 725.00**



**Randall Knives - AG Russell Special**

Fixed Blade, Finger Grooved Handle, Narrow Tang, 4 1/2" Blade, 0-1 Carbon Tool Steel, Ivorite Handle, Nickel Silver Hilt, Thong Hole, Red & SS Spacers, 9 1/4" OAL, Pre-owned. Not used or carried. Mirror polished blade. Finger-grooved Ivorite handle. Black leather sheath has sharpening stone in pocket and the AG Russell Special stamp on reverse side. Purchased in January 2017.

**KLSP92682 ————— \$ 850.00**



**Randall Knives - Model 1 - Fighter**

Fixed Blade, Narrow Tang, 7" Blade, 440B Stainless, 55-56 Rc., Black Micarta Handle, Nickel Silver Hilt, Red/Wht/Blk Spacers, 11 3/4" OAL, Pre-owned. Not used or carried. Originally purchased in Feb. 1977. Knife has been stored in sheath, excellent condition. Mirror polished blade with sharpened top edge. Nickel silver double hilt. Original brown leather sheath with black sharpening stone in pocket.

**KLSP92683 ————— \$ 725.00**



**Chris Reeve Knives - Small Sebenza 31 Insing**

Folder, 3 1/2" Blade, CPM MAGNACUT, 63-64 Rc., Titanium Handles, Lanyard, 4" Closed, New. Blade Show 2023 special (noted on lanyard bead). Insing blade model with polished finish has blue anodized titanium thumb stud. Glass blasted titanium handles with logo 'CR' on obverse and 'Idaho Made' on reverse. Anodized blue titanium spacer. Titanium pocket clip. Ships in Chris Reeve Knives cardboard box with all credentials with knife wrapped in blue chamois.

**KLSP92684 ————— \$ 595.00**

*Find More Knives at*

***cuttingedge.com***<sup>®</sup>



**Chris Reeve Knives - Small Sebenza 31 Insingo**

Folder, 3 1/2" Blade, CPM MAGNACUT, 63-64 Rc., Titanium Handle w/Box Elder, Lanyard, 4" Closed, New. Blade Show 2023 special (noted on lanyard bead). Insingo blade model with polished finish and has a gold anodized titanium thumb stud. Handle has logo 'CR' on obverse and 'Idaho Made' on reverse. Anodized gold titanium spacer. Titanium pocket clip. Ships in Chris Reeve Knives cardboard box with all credentials with knife wrapped in blue chamois. It also includes a leather pocket pouch.

**KLSP92685** ————— **\$ 795.00**



**Kent Hicks - Damascus Southwest Bowie**

Fixed Blade, False Top Edge, Hidden Tang, 8 1/4" Blade, Damascus Steel, Walnut Handle, Damascus Hilt, Damascus Pommel, 13 1/2" OAL, New from the maker. Hand forged by the maker, 320 layer damascus of 1084/17N20 steels. Damascus double hilt and pommel. Nicely figured walnut handle with a superglue finish. Brown leather sheath.

**KLSP92686** ————— **\$ 795.00**



**Wilkinson Sword - American Independence Sword**

Fixed Blade, 29 3/4" Blade, Unknown Steel, Blue Leather Wire Wrapped Hndl, 37" OAL, Pre-owned. Never used or carried. Excellent condition. This presentation American Independence sword was commissioned by the U.S. Historical Society to commemorate the 200th Anniversary of America's Independence. Made by Wilkinson Sword of London, England. The ceremonial blade has gold design on blued panel, the U.S. Historical Society eagles in gold as well as the inscription 'UNITED STATES OF AMERICA 1976'. The reverse blade as the same gold etching with 'WILKINSON SWORD LONDON' logo. Serial number '273' is etched on the tang. The counter guards have gold eagles applied over sterling silver wreaths. Solid sterling silver knuckle guard has 3 midnight blue sapphires. Sterling silver quillions. Blue leather handle with 2 strand silver wire wrap. Great Seal of the U.S. enameled in color on dark blue background with a diamond in each of the 13 stars. The reverse side has the pyramid with the Eye of Providence. Certificate of Authenticity. Portpee gold knot, chamois storage bag and ships in original blue leather box that is in excellent condition. There is a small scuff mark on the reverse blade. U.S. shipping only.

**KLSP92687** ————— **\$ 2000.00**



**Koji Hara - Small Gent's Midlock**

Folder, 2" Blade, ATS-34 Stainless, Mother-of-Pearl Scales, Stainless Bolsters, Nickel Silver Liners, 2 3/4" Closed, Pre-owned. Not used or carried. Satin finish blade with nail nick and maker's mark. Beautiful pearl scales. Ships in zippered case.

**KLSP92688** ————— **\$ 445.00**



**Harry Noel - Damascus Hunter**

Fixed Blade, Hidden Tang, 4" Blade, Damascus Steel, Stag Handle, Brass Guard, Brass Butt Plate, 8 1/4" OAL, Pre-owned. Not used or carried. Ladder pattern damascus of 1080/15N20 steels. All work by maker. Brown leather sheath. Ships in zippered case.

**KLSP92689** ————— **\$ 480.00**



**John Young - Long Rifleman Damascus Hunter**

Fixed Blade, Hidden Tang, 5 1/2" Blade, Damascus Steel, Stag Round Handle, Stainless Guard, Stainless Butt Cap, 9 7/8" OAL, Pre-owned. Not used or carried. Damascus blade of 1080/15N20/L-6. Nice stag handle. Custom brown leather sheath with tooling from the maker. Ships in zippered case.

**KLSP92690** ————— **\$ 560.00**



**R.W. Wilson - Drop Point Hunter**

Fixed Blade, Hidden Tang, 3 3/4" Blade, ATS-34 Stainless, Curly Maple Handle, Brass Guard, Brass Butt Plate, 9 3/4" OAL, Pre-owned. Not used or carried. Mirror polish blade with maker's name on reverse. Curly maple handle with black, red and yellow fiber spacers. Brown leather sheath from Rising Star Leather. Ships in zippered case.

**KLSP92691** ————— **\$ 425.00**



**Keith Bagley - Skinner**

Fixed Blade, Hidden Tang, 4 3/8" Blade, W-2 Carbon, Stag Round Handle, Stainless Guard, Stainless Butt Plate, 9 1/4" OAL, Pre-owned. Not used or carried. Upswept blade with hamon line and maker's logo on reverse blade. Nice stag handle with malachite and black fiber spacers. Brown leather sheath has light tooling. Ships in zippered case.

**KLSP92692** ————— **\$ 525.00**



**Billy Smith - Scagel-Style Hunter**

Fixed Blade, Hidden Tang, 4 1/2" Blade, 1080 Forged Carbon Steel, Antique White Tail Handle, Nickel Silver Guard, Nickel Silver Butt, 9" OAL, New from maker. Mirror polish blade with maker's logo on obverse. Antique stag handle with micarta, brass, nickel silver and leather spacers. Brown leather custom handstitched sheath from the maker. Ships in zippered case.

**KLSP92693** ————— **\$ 425.00**



**Billy Smith - Scagel-Style Hunter**

Fixed Blade, Hidden Tang, 4 1/2" Blade, 1080 Forged Carbon Steel, MI White Tail Antler Handle, Nickel Silver Guard, 9 1/2" OAL, New from maker. Satin finish blade with maker's logo on obverse. Handle has stabilized leather, micarta, nickel silver and brass spacers. Handstitch leather sheath has basketweave pattern. Ships in zippered case.

**KLSP92694** ————— **\$ 425.00**





**William Henry Knives - B15 Titan - Button Lock**

Folder, 3 1/4" Blade, ZDP-189 Stainless, 67 Rc., Titanium Handle, Thong Hole w/Lanyard, 4 1/8" Closed, Pre-owned. Not used or carried. Mirror polished ZDP-189 laminate steel blade. Aerospace grade titanium handle. Blue anodized titanium thumb stud. Stainless button. Black leather lanyard. Ships in original WH blue box with Certificate of Authenticity. Date completed 11/16/05 with serial number 601. Leather ClipCase included.

**KLSP92695** \_\_\_\_\_ **\$ 645.00**



**William Henry Knives - H300 Legacy**

Folder, 3" Blade, ZDP-189 Stainless, 67 Rc., Black Carbon Fiber Handle, Thong Hole w/Lanyard, 3 3/4" Closed, Pre-owned. Not used or carried. Friction folder does not lock open. Mirror polish blade. Serial number 202. Date completed 6/2/06. Leather pouch. Certificate of Authenticity. Ships in original WH blue box.

**KLSP92696** \_\_\_\_\_ **\$ 525.00**



**Rick Nowland - Wharncliffe Shadow**

Folder, 3 1/4" Blade, CPM-154 Stainless, Vintage Canvas Micarta Scales, 416 SS Liners, 4" Closed, New from maker. Slipjoint with half stop. Satin finish blade with forward nail nick and maker's name on obverse ricasso. Good looking micarta scales with black liners and stainless shield inlay. Ships in black zippered case.

**KLSP92697** \_\_\_\_\_ **\$ 425.00**



**James B. "Jimmy" Lile - Vintage Large Easy Open**

Folder, 3" Blade, ATS-34 Stainless, Nickel Silver Frame, Brown Micarta Inlays, 4" Closed, Pre-owned. Not used or carried. Satin finished blade with checkered thumb stud on each side for right or left hand opening. Maker's name on obverse ricasso that has minor scratching from opening and closing. Brown micarta inlay on each side. Lockback. Overall excellent condition.

**KLSP92698** \_\_\_\_\_ **\$ 730.00**



**Deryl Wright - Hunter/Skinner**

Fixed Blade, Full Tapered Tang, 4 1/4" Blade, CTS-XHP Carpenter Steel, 60.5 Rc Cyro-Treat, Ironwood Handle Scales, Nickel Silver Guard, Thong Hole, Red Liners, 9" OAL, New from maker. Dual finish blade with polished guard. Nicely figured ironwood scales. Brown leather sheath from maker.

**KLSP92699** \_\_\_\_\_ **\$ 510.00**



**Deryl Wright - Deluxe Hunter**

Fixed Blade, Narrow Tang, 4 1/4" Blade, CTS-XHP Carpenter Steel, 60.5 Rc. Cyro-Treat, Stag Handle, Nickel Silver Guard, Micarta Butt, 8 1/4" OAL, New from maker. Dual finish blade with polished guard. Smooth stag handle with nickel silver and red coral gold laced spacers. Brown leather sheath from maker.

**KLSP92700** \_\_\_\_\_ **\$ 510.00**



**Jaymes Stevens - Damascus Straight Razor**

Folder, 2 3/4" Cutting Edge, Damascus Steel, Carbon Fiber Handle Scales, Orange G-10 Inlay, 6" OAL w/Flipper, New from maker. Tight patterned damascus blade seats well in the carbon fiber scales. Nickel silver pins with stainless washers. Orange G-10 backspacer. Ships in zippered pouch.

**KLSP92701** \_\_\_\_\_ **\$ 470.00**



**Sam Roddy - Small Hunter**

Fixed Blade, Full Tang, 3 1/4" Blade, Damascus Steel, Brown Russian Micarta Scales, Thong Hole w/Lanyard, 6 1/4" OAL, New from maker. 'Volcanic River' GoMai blade has 100 layer damascus core and triple layer of copper and nickel. Dark brown Russian micarta handle with black & natural micarta spacers. Black leather braided lanyard. Shark skin leather sheath.

**KLSP92702** \_\_\_\_\_ **\$ 470.00**



**Kenneth Carr - Damascus Chopper**

Fixed Blade, Full Tapered Tang, 4" Blade, Damascus Steel, Walnut Wood Handle Scales, Red Liners, Mosaic Pin, 8" OAL, New from maker. Damascus blade with maker's stamp on obverse ricasso. Beautifully figured walnut handle with mosaic center pin. Brown leather sheath.

**KLSP92703** \_\_\_\_\_ **\$ 560.00**



**Kenneth Carr - Hunter**

Fixed Blade, Contured Handle, Full Tapered Tang, 4" Blade, CPM-S60V Stainless, Desert Ironwood Handle Scales, Nickel Slv Bolsters, 8 5/8" OAL, New from maker. Satin finish blade with maker's name on obverse ricasso and checkering on the spine. Nicely grained desert ironwood scales. Brown leather sheath with light tooling.

**KLSP92704** \_\_\_\_\_ **\$ 525.00**



**Stek Knives - Camp Knife**

Fixed Blade, Full Tang, 7 1/4" Blade, 1095 Carbon Steel, Sambar Stag Handle Scales, Thong Hole, Red Liners, 12" OAL, Pre-owned. Not used or carried. Mirror polished blade with maker's logo on obverse ricasso. Matched stag scales. Brown leather sheath.

**KLSP92705** \_\_\_\_\_ **\$ 610.00**



**Stek Knives - Hunter**

Fixed Blade, Hidden Tang, 7" Blade, 1095 Carbon Steel, Stag Round Handle, Double Brass Guard, Brass Butt Cap, 12 1/4" OAL, Pre-owned. Not used or carried. Mirror polish blade with maker's logo on obverse. Double brass guard. Nice stag round handle has brass, red and brown acrylic spacers. Brown leather sheath.

**KLSP92706** \_\_\_\_\_ **\$ 645.00**



#### Stek Knives - Bowie

Fixed Blade, Hidden Tang, 8" Blade, 1095 Carbon Steel, Stag Round Handle, Double Brass Hilt, Brass Butt Plate, 13" OAL, Pre-owned. Not used or carried. Mirror polish blade with maker's logo on ricasso. There are light scratches on the blade from sheath storage. Substantial brass hilt. Green acrylic, brass and red spacers compliment the stag round handle. Brown leather sheath.

KLSP92707 ————— \$ 710.00



#### Keith Murr - Hunter

Fixed Blade, Hidden Tang, 4" Blade, D2, Oosic Handle, Stainless Guard, Stainless Butt Cap, Red/Wht/Blue Spacers, 8 1/4" OAL, New from maker. Mirror polish blade with maker's logo on obverse. Jimping on spine. Smooth Oosic handle. Brown leather sheath from the maker.

KLSP92708 ————— \$ 610.00



#### Keith Murr - Damascus Hunter

Fixed Blade, Full Tang, 3 3/4" Blade, Damascus Steel, Desert Ironwood Handle Scales, Thong Hole w/Lanyard, 8" OAL, New from maker. Alabama damascus blade has maker's name on obverse side. Figured ironwood scales. Brown leather braided lanyard. Brown leather sheath from the maker.

KLSP92709 ————— \$ 485.00



#### Keith Murr - Damascus Hunter

Fixed Blade, Full Tang, 3 3/4" Blade, Damascus Steel, Sambar Stag Handle Scales, Thong Hole w/Lanyard, Black Liners, Mosaic Pins, 8" OAL, New from maker. Alabama damascus blade with maker's name on obverse side. Matched stag scales. Brown leather braided lanyard. Brown leather sheath from the maker.

KLSP92710 ————— \$ 525.00



#### Keith Murr - Damascus Hunter

Fixed Blade, Full Tang, 3 3/4" Blade, Damascus Steel, Yellow-Dyed Ram's Horn Scales, Thong Hole w/Lanyard, 8" OAL, New from maker. Alabama damascus blade with maker's name on obverse. Rugged ram's horn scales. Brown braided leather lanyard. Brown leather sheath from the maker.

KLSP92711 ————— \$ 485.00



#### Keith Murr - Hunter

Fixed Blade, Full Tang, 3 5/8" Blade, D2, White & Black Micarta Scales, Thong Hole w/Lanyard, Red Liners, Mosaic Pins, 8" OAL, New from maker. Mirror polish blade with filework is marked "Murr 2017". White and black micarta scales is separated by a red fiber spacer. Brown leather lanyard. Includes brown leather sheath from the maker.

KLSP92712 ————— \$ 405.00



#### Terry "TC" Roberts - Damascus Hunter

Fixed Blade, Hidden Tang, 4 1/2" Blade, Damascus Steel, Stag Round Handle, Cast Bronze Guard, Bronze Pommel, 9 1/8" OAL, New from maker. Chad Nichols San Mai Damascus blade. Cast bronze guard with inlays of pine trees on obverse and a grizzly bear on reverse side. Premium stag round handle. Bronze butt plate with bear print. Brown leather tooled sheath from Parsons.

KLSP92713 ————— \$ 890.00



#### Terry "TC" Roberts - Damascus Hunter

Fixed Blade, Hidden Tang, 4 3/8" Blade, Damascus Steel, Sambar Stag Handle, Damascus Guard, Damascus Butt Plate, Turquoise Spacer, 9" OAL, New from maker. Chad Nichols damascus blade. Damascus guard with a rabbit inlay on the obverse and a coyote on the reverse. Real turquoise spacer and very nice sambar stag round handle. Tooled brown leather sheath. Guard is marked '2023'.

KLSP92714 ————— \$ 890.00



#### Terry "TC" Roberts - Integral Bowie

Fixed Blade, 10 5/8" Blade, D2, D2 Handle w/Jasper Inlay, Intergal Double Hilt, 15 7/8" OAL, New from maker. Integral bowie made of D2 steel. Filework on 4" of blade spine. Biggs Canyon jasper inlay in handle (both sides). There are a few miniscule scuff marks from storage. Nickel silver scabbard also has a jasper.

KLSP92715 ————— \$ 2025.00



#### Ricardo Perpina - Large Fighter

Fixed Blade, Finger Grooved Handle, Full Tang, 8" Blade, 440C Stainless, Stag Handle Scales, Stainless Dbl Hilt, Thong Hole, Black Liners, USMC Mosaic Pin, 13" OAL, New from maker. Mirror polish blade with sharpened top edge. Double stainless hilt with single drilled hole. Closely matched handle scales. Dark brown leather sheath with sharpening stone in pouch. Made in Argentina.

KLSP92716 ————— \$ 715.00



#### Fudo Forge - Chef

Fixed Blade, Hidden Tang, 8" Blade, W-1 Carbon, Spalted Silver Maple Handle, Kudo Horn Spacer, 13" OAL, New from maker. Hand polished W-1 Tool Steel blade with visible hamon line. Highly figured maple handle with dark kudo horn spacer. Card of authenticity states serial number is 1357. Ships in box with care instructions.

KLSP92717 ————— \$ 650.00





#### Fudo Forge - Integral Stiletto

Fixed Blade, Hidden Tang, 6 1/2" Blade, Hitachi, 1085 Carbon Steel, Bloodwood Burl Handle, Integral Bolster, 11" OAL, New from maker. Hand rubbed satin finish blade with maker's mark on reverse. So sleek. Figured burl handle. Card of authenticity states serial number is 1350. Includes leather sheath. Ships in zippered case with care instructions.

KLSP92718 \$ 485.00



#### Jesse Davis - Damascus Bowie

Fixed Blade, Hidden Tang, 10 3/4" Blade, Damascus Steel, India Crown Stag Handle, 303 Stainless Hilt, Concho in Pommel, Amber Spacer, 17 1/8" OAL, New from maker. Damascus blade with maker's name on reverse ricasso has filework on spine. Hefty crown handle with fileworked stainless and amber spacers. Ornate concho embedded in butt. No sheath. Ships in zippered case.

KLSP92719 \$ 730.00



#### Dave Kauffman - Damascus Fighter

Fixed Blade, Full Tapered Tang, 5 3/4" Blade, Damascus Steel, Mastadon Ivory Handle Scales, Mosaic Bolsters, Mosaic Pins, 11 3/8" OAL, Pre-owned. Not used or carried. Damascus with false top-edge and maker's name on obverse. Mosaic damascus bolsters. Nicely figured mastadon ivory on obverse side, with less figuring on reverse side. Brown leather sheath from Bison Saddlery, Helena, MT. Ships in zippered case.

KLSP92720 \$ 1290.00



#### Wayne Hensley - Dagger

Fixed Blade, Full Tang, 6 1/8" Blade, Double-Edged, Stainless Steel, Stainless Integral Frame, Engraved Bolsters, Stainless Dbl Hilt, M-o-P Inlays, 11" OAL, Pre-owned. Not used or carried. Has been stored in sheath. Mirror polish blade with maker's name on obverse. Engraved double hilt and bolsters signed by "Small". Fiery mother-of-pearl scales. Dark brown leather sheath with tooling from the maker.

KLSP92721 \$ 1535.00



#### Lloyd Hale - Hunter

Fixed Blade, Full Tang, 5" Blade, Stainless Steel, Black Micarta Handle Scales, Stainless Guard, 9 1/2" OAL, Pre-owned. Not used or carried. Knife has been stored in sheath. Mirror polish blade. Filework around the entire tang. Maker's name on nickel silver shield on reverse handle scale. Dark brown leather sheath has light tool work.

KLSP92723 \$ 770.00



#### Lloyd Hale - Wharncliffe Art Knife

Fixed Blade, Wrapped Tang Construction, 4" Blade, Stainless Steel, Ivory Micarta Handle Scales, Stainless Guard, Thong Hole, 9 1/4" OAL, Pre-owned. Not used or carried. Knife has been stored in sheath. Mirror polish blade with heavy filework on spine and around the entire tang construction. Maker's name embedded in tang. Dark brown leather sheath has light tooling.

KLSP92724 \$ 770.00



#### Steve Powers - Hunter

Fixed Blade, Finger Grooved Handle, Full Tapered Tang, 3 3/4" Blade, 154CM Stainless, 60 Rc., Burgundy Acrylic Handle Scales, Stainless Bolsters, Thong Hole, Red Liners, 8 1/4" OAL, New from maker. Mirror polish blade filework on the spine. Stainless dove-tailed bolsters. Dark burgundy, highly figured acrylic scales. Light filework on tang. Hot-waxed brown leather sheath with light tooling from the maker.

KLSP92725 \$ 415.00



#### Steve Powers - Hunter

Fixed Blade, Grooved Handle, Full Tapered Tang, 4" Blade, 154CM Stainless, 60 Rc., Desert Ironwood Handle Scales, Stainless Bolsters, Thong Hole, Red Liners, 8 1/2" OAL, New from maker. Mirror polish blade with jimping and light filework. Stainless dove-tailed bolsters. Nicely figured ironwood scales. Light filework on tang. Hot-waxed brown leather sheath with light tooling from maker.

KLSP92726 \$ 460.00



#### Steve Powers - Skinner

Fixed Blade, Contoured Handle, Full Tapered Tang, 4 1/4" Blade, 154CM Stainless, 60 Rc., Purple Karelian Birch Scales, Stainless Bolsters, Thong Hole, Black Liners, 9" OAL, New from maker. Mirror polish blade with jimping and light filework. Stainless dove-tailed bolsters. Karelian Birch dyed deep purple handle scales. Light filework on tang. Hot-waxed brown leather sheath with light tooling from maker.

KLSP92727 \$ 460.00



#### Deryl Wright - Classic Hunter

Fixed Blade, Full Tapered Tang, 3 3/4" Blade, CTS-XHP Carpenter Steel, 60.5 Rc. Cyro Treat, Desert Ironwood Handle Scales, Nickel Silver Guard, Thong Hole, Red Liners, 8 1/8" OAL, New from maker. Mirror polish blade. Nicely grained ironwood scales. Handmade brown leather pouch style sheath from maker.

KLSP92728 \$ 460.00

Find More Knives at

**cuttingedge.com®**



#### Wardman Custom Knives - Custom Hunter

Fixed Blade, Hidden Tang, 4 1/8" Blade, CPM-154 Stainless, Sambar Stag Handle, Brass Guard, Brass Butt Cap, Amboyna Spacer, 8 7/8" OAL, Pre-owned. Not used or carried. Mirror polish blade with maker's logo on ricasso. Premium stag handle with an amboyna burl spacer. Dark brown leather sheath with snap from the maker.

KLSP92729 \_\_\_\_\_ \$ 525.00



#### T.K. (Tim) Steingass - Custom Hunter

Fixed Blade, Full Tapered Tang, 4" Blade, Damascus Steel, Tiger Koa Wood Handle, Stainless Guard, Thong Hole, Red Liners, 8 1/2" OAL, Pre-owned. Not used or carried. Large pattern damascus blade contrasts nicely with the tiger stripe koa wood handle. Brown leather pouch-style sheath from the maker.

KLSP92730 \_\_\_\_\_ \$ 560.00



#### Chuck Hawes - Hunter

Fixed Blade, Hidden Tang, 4 3/4" Blade, Laminated Steel, Stag Handle, Nickel Silver Guard, 5/8" Mosaic Butt Pin, 10" OAL, Pre-owned. Not used or carried. Laminated blade shows strong hamon line. Filework on spine. Polished guard. Red fiber and stacked leather spacers compliment the stag handle. Brown leather sheath with copper rivets is signed by the maker. Ships in zippered case.

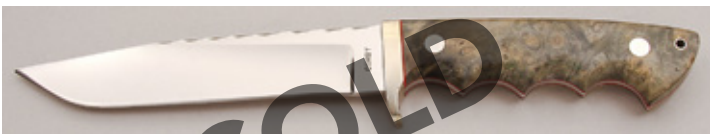
KLSP92732 \_\_\_\_\_ \$ 495.00



#### Devon "Butch" Beaver - Gent's Boot Knife

Fixed Blade, Hidden Tang, 3 1/2" Blade, ATS-34 Stainless, 4-Piece Yellow Amber Handle, Stainless Guard, Stainless Pommel, Blk/Stainless Spacer, 7 1/8" OAL, Pre-owned. Not used or carried. Mirror polish blade with filework along spine and ricasso. Maker's name on obverse blade. Filework on guard. Bright yellow amber is separated by black and stainless spacers. Leather sheath has metal boot clip. Ships in zippered case.

KLSP92733 \_\_\_\_\_ \$ 625.00



#### Harold Corby - Fighter

Fixed Blade, Finger Grooved Handle, Full Tapered Tang, 5 3/4" Blade, 440C Stainless, Dyed Buckeye Burl Handle Scale, Nickel Silver Guard, Thong Hole, Red Liners, 10 5/8" OAL, Pre-owned. Not used or carried but possibly stored in a sheath at some point. The mirror polish blade has a few faint, light scratch marks. Filework on the spine. A few marks on the guard. Nicely figured burl handle scales. Black leather sheath. Ships in zippered case.

KLSP92734 \_\_\_\_\_ \$ 460.00



#### Chuck Hawes - Camp Knife

Fixed Blade, Hidden Tang, 5 1/2" Blade, Damascus Steel, Stag, Leather & Micarta Handle, Brass Guard, Brass Spacers, 10" OAL, Pre-owned. Not used or carried. High carbon damascus blade with light filework on the spine. Dyed stag handle with leather washers and micarta spacer. Mosaic pin in the butt. Brown leather sheath with light tooling. Ships in zippered case.

KLSP92736 \_\_\_\_\_ \$ 445.00



#### Chuck Hawes - Damascus Hunter

Fixed Blade, Hidden Tang, 4 1/4" Blade, Damascus Steel, Stag Handle, Brass Guard, Red Spacers, 8 7/8" OAL, Pre-owned. Not used or carried. High carbon damascus blade forged by maker. Thumb notches and lift filework along the edge of the blade. Stag handle with green maple spacer. Mosaic pin in butt. Brown leather sheath has light tooling. Ships in zippered case.

KLSP92737 \_\_\_\_\_ \$ 415.00



#### Steve Powers - Hunter

Fixed Blade, Full Tang, 4" Blade, 154CM Stainless, 60 Rc., Gold Micarta Handle Scales, Nickel Silver Guard, Thong Hole, Red Liners, 8 1/4" OAL, New from maker. Mirror polish blade with light filework on thumb notches on the spine. Good looking micarta scales. Light filework on tang. Hot-waxed brown leather sheath with light tooling from the maker.

KLSP92739 \_\_\_\_\_ \$ 460.00



#### Steve Powers - Everyday Carry

Fixed Blade, Full Tang, 3 1/2" Blade, 154CM Stainless, 60 Rc., Paua Shell Handle Scales, Stainless Bolsters, Thong Hole, Black Liners, 6 5/8" OAL, New from maker. Mirror polish blade with filework on the spine. Dovetailed bolsters. Colorful paua shell handle. Light filework on the tang. Brown hot-waxed leather sheath from the maker.

KLSP92741 \_\_\_\_\_ \$ 460.00



#### Phil J. Ernest - Damascus Fighter

Fixed Blade, Full Damascus Tang, 7 3/4" Blade, Damascus Steel, Mammoth Ivory Handle Scales, Damascus Bolsters, 13 3/8" OAL, Pre-owned. Not used or carried. Damascus blade has some staining and light scratching. Nicely matched mammoth ivory handle scales. Mosaic damascus bolsters. Filework along 2 1/4" of the spine. No sheath. Ships in zippered case.

KLSP92742 \_\_\_\_\_ \$ 425.00

*Give us a call at 1-800-965-6433 or  
email Debbie at [ce\\_info@cuttingedge.com](mailto:ce_info@cuttingedge.com)  
for information on how we can help sell your knives.*



# The Cutting Edge®

2900 South 26th Street  
Rogers, AR 72758-8571

**Order By Phone -1-800-965-6433**

© 2024 A.G. Russell™ Knives, Inc. All rights reserved

**FIRST CLASS**

FIRST CLASS MAIL  
U.S. POSTAGE  
PAID  
A. G. Russell



**Danny Coffman - Dagger-Style Linerlock**

Folder, False Top-Edge, 2 7/8" Blade, Unknown Steel, Carved Mother-of-Pearl Scales, Titanium Bolsters, Titanium Liners, 3 7/8" Closed, Pre-owned. Not used or carried. Purchased in 2002 and was told this was maker's 3rd folder to make. Satin finish blade with checkered thumb stud. Filework on backspacer with mother of pearl inserts. Titanium pocket clip has maker's initials "DC 1". Ships in zippered case.

**KLSP92743** ————— **\$ 475.00**



**Richard Orton - Linerlock**

Folder, 2 3/4" Blade, Damascus Steel, Amber Bone w/Light Jig Scales, Titanium Bolsters, Titanium Liners, 3 3/8" Closed, Pre-owned. Not used or carried. Damascus by Jim Ferguson. Checkered thumb stud has cubic zirconia inset. Anodized titanium bolsters and fileworked liners. Damascus backspacer. Filework on spine. Ships in zippered case.

**KLSP92744** ————— **\$ 400.00**



**Richard Orton - Linerlock**

Folder, 3 1/2" Blade, Damascus Steel, Amboyna Burl Handle Scales, Damascus Bolsters, Titanium Liners, 4 3/8" Closed, Pre-owned. Not used or carried. Ladder pattern damascus from Jim Ferguson. Thumb stud has sapphire inset. Damascus bolsters. Filework on anodized titanium liners and backspacer. Maker's name and '2002' on inside spring. Ships in zippered case.

**KLSP92745** ————— **\$ 450.00**



**James Rodebaugh - Wharncliffe Linerlock**

Folder, 2 7/8" Blade, Mosaic Damascus, Mammoth Ivory Scales, Damascus Bolsters, Titanium Liners, 3 5/8" Closed, Pre-owned. Not used or carried. Mosaic damascus blade and bolsters from ABS Master Smith. Outstanding mammoth ivory scales. Thumb stud has tiger eye inset. Blue anodized liners with filework. Anodized stainless backspacer. Smooth action. Ships in zippered case.

**KLSP92746** ————— **\$ 1065.00**



**Jay Hendrickson - Skinner**

Fixed Blade, Full Tapered Tang, 4 7/8" Blade, Carbon Steel, Cocobolo Handle, Nickel Silver Guard, 9 1/4" OAL, Pre-owned. Not used or carried. Mirror polish blade finish. Nice grain in wood handle. Dark brown leather sheath with light tooling.

**KLSP92747** ————— **\$ 425.00**



**Ronnie Foster - Hunter**

Fixed Blade, Hidden Tang, 4 3/8" Blade, Carbon Steel, Stag Handle, Nickel Silver Guard, Nickel Silver Cap, 9" OAL, Pre-owned. Not used or carried. Satin finish blade. Brown leather sheath.

**KLSP92748** ————— **\$ 585.00**



**John Perry - Hunter**

Fixed Blade, Hidden Tang, 3 3/4" Blade, Carbon Steel, Maple Handle, Nickel Silver Guard, 8 1/2" Blade, Pre-owned. Not used or carried. Satin finish blade with maker's mark on obverse. Nice, contoured maple handle. Brown leather sheath.

**KLSP92749** ————— **\$ 475.00**



**John Martin - Damascus Hunter**

Fixed Blade, Full Tang, 3 1/2" Blade, Damascus Steel, Pinned Stag Handle Scales, Nickel Silver Guard, 7 1/4" OAL, Pre-owned. Not used or carried. Damascus blade with maker's initials 'JAM' and JS journey smith designation on the obverse ricasso. Nicely matched stag scales. Tooled brown leather sheath.

**KLSP92750** ————— **\$ 400.00**

*All fixed blade knives include a sheath  
unless otherwise stated.*

*Do you have knives you'd like  
to sell in our catalog?  
E-mail Debbie at [ce\\_info@cuttingedge.com](mailto:ce_info@cuttingedge.com)*