

The Cutting Edge®

Downloadable Version at
cuttingedge.com/pdf

KLSP92002
Smith

KLSP92012
House

KLSP92008
Dunlap

KLSP92013
Merz

KLSP92014
Baker

Pre-Owned and Handmade Knives
for Immediate Delivery
May 2023

The Cutting Edge®

A. G. Russell's List of Knives for Immediate Delivery - May 2023

Orders Accepted Only by Phone – 800-965-6433

The expiration date of your subscription is printed on the top line of the mailing label on this book and is indicated as S2023, S2024, etc., followed by the month of the expiration. An example would be S202312, which means that your current subscription will expire at the end of December 2023. We are currently mailing six (6) printed books each year.

The cost of printing and mailing these books is such that we can no longer mail them to folks who are not purchasing. If you have not purchased from *The Cutting Edge*® anytime during the past twelve (12) months, you will need to subscribe as follows:

KL _____ Annual Subscription - within the USA — \$15.00
KL-INT — Annual Subscription - International — \$30.00

If you are receiving an email notice of a posted PDF of the book, you will continue to receive that email as long as the email address we have for you works. If you do not currently receive an email with a link to this catalog and wish to, send an email to ce-info@cuttingedge.com or call 800-965-6433 (email works best) and tell us to email you that link each time a new book is going into the mail.

When you find one or more knives that you would like to purchase, make a phone call to 800-965-6433 between the hours of 8:30 a.m. and 4:30 p.m. CT Monday – Friday. There is only one of each of these knives and some will go quickly. **Orders for these knives cannot be placed online.** We can charge your purchase to Visa, Mastercard or Discover, or we can hold a knife for up to ten business days to allow you to send a personal check.

cuttingedge.com continues to be very active, with new knives added on the Wednesday closest to the 1st of the month, and sometimes on Wednesday of the 3rd or 4th week of the month. Prices on knives that have been listed on cuttingedge.com more than one month are reduced on the Wednesday closest to the 15th of each month. A reminder is sent on each of these Wednesdays as a part of the **A.G. Russell Weekly Special**. Be sure that we have your current email address so you can get these reminders. Send the email address to ce-info@cuttingedge.com or call 800-965-6433 (email works best).

Preview Period:

Any knife purchased from this list may be returned within 14 days for a refund. If you return the knife after the 14 days, we will happily put it on consignment for you.

Standard Shipping (48 States) _____ \$8.95
Accelerated Service (48 States) _____ 4-5 days _____ add \$7.00
Expedited Service (48 States) _____ 3-4 days _____ add \$15.00
Express Service (48 States) _____ 1-2 days _____ add \$30.00
Alaska, Hawaii & Territories (U. S. Mail) _____ add \$7.00

Shipping outside the U.S. will be billed at actual cost.

Sorry, No COD Shipments.

All fixed blades include a sheath unless otherwise noted.

Folders **do not** include a pouch unless so indicated.



Deryl Wright - Hunter

Fixed Blade, Narrow Tang, 4 1/8" Blade, CTS-40CP Stainless, 60.5 Rc. Cyro Treat, Stag with Red Coral Handle, Nickel Silver Guard, Nickel Silver Butt, 8 1/4" OAL, New from maker. Dual satin and mirror polish blade. Black and nickel silver spacers. Brown leather sheath from the maker.

KLSP91860 _____ \$ 630.00



Robert Young - Drop Point Hunter

Fixed Blade, Taper Tang, 3 1/4" Blade, CPM-154 Stainless, 60 Rc. Cyro Treat, Olive Drap Micarta Scales, Stainless Steel Hilt, Thong Hole, Red Liners, 7 1/2" OAL, New from maker. Mirror polish blade with serial number P154550 on reverse. Brown leather sheath with matching serial number from maker.

KLSP91865 _____ \$ 450.00



Deryl Wright - Hunter

Fixed Blade, Full Tapered Tang, 3 7/8" Blade, CTS-40CP Stainless, 60.5 Rc. Cyro Treat, Desert Ironwood Handle Scales, Nickel Silver Guard, Thong Hole, Red Liners, 8" OAL, New from maker. Dual finish blade. Nicely figured ironwood scales. Brown leather sheath from the maker.

KLSP91861 _____ \$ 585.00



Michael Connor - Hunter

Fixed Blade, Hidden Tang, 4 5/8" Blade, Carbon Steel, Maple Handle, Nickel Silver Guard, Nickel Silver Butt, 9 1/4" OAL, Pre-owned. Not used or carried. Satin finish blade with maker's name on obverse and 'MS' Master Smith designation on reverse. Colorful maple handle. Comes with tooled leather sheath marked J.F. Keeslar.

KLSP91868 _____ \$ 1620.00



Deryl Wright - Hunter

Fixed Blade, Narrow Tang, 4 1/8" Blade, CTS-40CP Stainless, 60.5 Rc. Cyro Treat, Stag Handle, Nickel Silver Guard, Nickel Silver Butt, 8 1/2" OAL, New from maker. Dual finish blade. Hefty stag handle. Black, red, and nickel silver spacers. Brown leather sheath with eagle snap from the maker.

KLSP91862 _____ \$ 630.00



Tim Foster - Takedown Hunter

Fixed Blade, Narrow Tang, 3 3/4" Blade, Carbon Steel, Maple Wood Handle, Integral Hilt, Stainless Butt, 8 1/2" OAL, Pre-owned. Not used or carried. Satin finish blade with maker's name and "MS" Master Smith designation. Figured maple handle. No sheath.

KLSP91871 _____ \$ 810.00



Dickie Robinson - Fancy Hunter

Fixed Blade, Narrow Tang, 4" Blade, Carbon Steel, Desert Ironwood Handle Scales, Stainless Guard, 8 1/4" OAL, Pre-owned. Not used or carried. Satin finish blade has maker's name on obverse and 'MS' Master Smith designation on reverse. Engraved guard. Two-tone ironwood scales. No sheath.

KLSP91872 _____ \$ 720.00



Mike Williams - Fancy Hunter

Fixed Blade, Narrow Tang, 4" Blade, Carbon Steel, Exotic Wood Handle Scales, Stainless Guard, Fancy Stainless Pins, 8 1/2" OAL, Pre-owned. Not used or carried. Satin finish blade with maker's name and Master Smith designation on obverse ricasso. Beautiful floral engraved guard (both sides). Nicely grained wood handle scales. No sheath.

KLSP91873 _____ \$ 1080.00



David Anders - Fighter

Fixed Blade, Narrow Tang, 6 3/4" Blade, Carbon Steel, Ebony Handle, Nickel Silver Hilt, 11 1/4" OAL, Pre-owned. Not used or carried. Satin finish blade by current Master Smith. This knife was used for Journey Smith test. Double hilt. Dark wood handle. No sheath.

KLSP91874 _____ \$ 810.00



George Roth - Short Sword

Fixed Blade, Hidden Tang, 12" Blade, Double Edged, Damascus Steel, Brass & Stag Handle, Brass Double Hilt, Brass Pommel, 17 1/2" OAL, Pre-owned. Not used or carried. Random pattern damascus blade shows some carbon spots on the sharpened edge. Decorative brass hardware with smooth stag handle. No sheath.

KLSP91875 _____ \$ 810.00



Gary Crowder - Slipjoint Trapper

Folder, 2 7/8" Clip Point, 2 7/8" Spey Blade, Stainless Steel, Mammoth Ivory Handle Scales, Stainless Bolsters, Stainless Liners, 3 1/2" Closed, Pre-owned. Not used or carried. Satin finish blades with nail nicks. Nicely matched scales. Filework on liners. Ships in zippered case.

KLSP91879 _____ \$ 810.00



Wayne Whittaker - Lockback

Folder, 2 7/8" Blade, ATS-34 Stainless, Mammoth Ivory Handle Scales, Damascus Bolsters, Blue Titanium Liners, 4 3/4" OAL, New from maker. Mirror polish blade with nail nick and maker's initials "WW". Raindrop damascus bolsters. Nicely matched handle scales. Hammered liners. Filework on lockbar. Ships in zippered case.

KLSP91881 _____ \$ 875.00



Suchat Jangtanong - Lockback

Folder, 2 3/4" Blade, Mosaic Damascus, Carved Stainless Scales, Stainless Liners, Light Jade Inlay, 3 5/8" Closed, Pre-owned. Not used or carried. Mosaic damascus blade w/leaf decoration on spine. Carved stainless with mosaic damascus handle scales that include a genuine diamond on each side. Light jade inlay on each side. Filework on liners and lockbar that also has a diamond inset. Ships in zippered case.

KLSP91884 _____ \$ 765.00



Rockstead Knives - SAI-T Japanese Custom

Folder, 3 1/4" Blade, ZDP-189 Stainless, 67 Rc., Coated Titanium Handle Scales, Thong Hole, Linerlock, 4 1/4" Closed, Pre-owned. Not used or carried. Mirror polish tanto "Honzukuri" blade (both sides have a convex grind). DLC Prism coated titanium handles scales have a terraced effect. Strong, solid linerlock. Black leather pouch. Individually serial numbered and comes with a certificate of authenticity. Ships in original wooden box with chamois cloth.

KLSP91886 _____ \$ 1800.00



William Henry Knives - Mattlock

Folder, 3 5/8" Blade, 154CM Stainless, Titanium Frame, 4 3/4" Close, Pre-owned. Not used or carried. Titanium frame with black carbon fiber inserts. Satin finish blade with thumbstud. Frame has built-in lanyard hole and durable carbon fiber inserts. Black leather clip case. Ships in original box with paperwork concerning the knife and the patented MattLock.

KLSP91887 _____ \$ 765.00



Chris Reeve Knives - Neil Roberts Warrior Knife

Fixed Blade, Full Tang, 6 1/4" Blade, S30V Stainless, 55-57 Rc., Black Canvas Micarta Scales, 11 1/4" OAL, Pre-owned. Not used or carried. Completion date 4/6/05, designed by Bill Harsey and dedicated to the memory of the first SEAL to lose his life in action since 1989 during Operation Acaconda, Afghanistan 2002. Drop point, hollow ground black coated blade finish. Blade is marked "Neil Roberts - BUD/S Class 184". Not serialized (184 were numbered for the Navy Seal community), but the knife is identical. Includes Tan SpecOps nylon sheath with original box and documentation.

KLSP91889 _____ \$ 895.00

All fixed blade knives include a sheath unless otherwise stated.



Andreas Kalani - FELLY-Ray

Fixed Blade, Full Tang, 9" Blade, 80CrV2 Carbon Steel, Canvas Micarta Handle Scales, Thong Hole w/Lanyard, 13" OAL, New from maker. Hand rubbed satin finish high carbon blade is full flat ground and is flexible. Great for professional fisherman or home chef for filleting. Multi-Scale canvas micarta handle. Lanyard. Hybrid Kydex/Stingray with leather straps. Includes a Certificate of Authenticity and Moommix protectant.

KLSP91890 _____ \$ 850.00



Harold Corby - Fancy Hunter

Fixed Blade, Hidden Tang, 5 3/8" Blade, Unknown Steel, Stag Round Handle, Stainless/Brass Hilt, Brass Butt Cap, 10 1/4" OAL, Pre-owned. Blade has been nicely re-polished. Maker's name on reverse side. Pronounced upper false edge. Two-tone brass and steel guard is engraved with stippling on the outer edge. Nice stag handle. Brass butt cap has the initials "JP" in Old English (or similar) font. Brown leather sheath is from the George Lawrence Co. Ships in zippered case.

KLSP91903 _____ \$ 675.00



Andreas Kalani - DRENGR-Sorkh

Fixed Blade, Full Tapered Tang, 3 1/2" Blade, 80CrV2 Carbon Steel, Birdseye Maple Handle Scales, Thong Hole w/Lanyard, Copper Liners, 7" OAL, New from maker. Hand rubbed satin finish high carbon blade with saber grind. Colorful maple scales with copper accents. Matching lanyard. Hybrid kydex/leather sheath. Includes a matching gemstone bracelet. Certificate of Authenticity and Moommix protectant.

KLSP91891 _____ \$ 950.00



Lloyd Hale - Art Knife

Fixed Blade, Grooved Handle, Hidden Tang, 4" Blade, Unknown Steel, Whale Tooth Handle, Brass Guard, 8" OAL, Pre-owned. Has been repolished with a bright mirror finish. Light filework along the blade spine. Finger grooved handle. Brown, brass and bone spacers. Brown leather sheath is marked "Johnson's Leather Casselberry, FLA". Ships in zippered case.

KLSP91904 _____ \$ 895.00



Andreas Kalani - BOLVERK-Dasht

Fixed Blade, Tapered Tang, 4" Blade, 80CrV2 Carbon Steel, Birdseye/Spalted Maple Scales, Thong Hole w/Lanyard, Micarta Liners, 8" OAL, New from maker. Hand rubbed satin finish high carbon blade with saber grind. Colorful maple wood scales with natural micarta spacers. Matching tan lanyard. Hybrid kydex/leather sheath. Includes a matching gemstone bracelet, Certificate of Authenticity and Moommix protectant.

KLSP91892 _____ \$ 950.00



John H. Davis - Hunter

Fixed Blade, Full Tapered Tang, 4 1/8" Blade, CPM-154 Stainless, Ram's Horn Handle Scales, Red Liners, 8 5/8" OAL, Pre-owned. Not used or carried. Satin finish blade. Textured and smooth finish ram's horn scales. Brown leather sheath has light tooling. Ships in zippered case.

KLSP91908 _____ \$ 475.00



Randall Knives - Model 1 - 6" Fighter

Fixed Blade, Commando Handle, Narrow Tang, 6" Blade, 440B Stainless, 55-56 Rc., Black Micarta Handle, Nickel Slv Dbl Hilt, Duraluminum Butt Cap, Red/Wht/Blue Spacers, 10 7/8" OAL, Pre-owned. Not used or carried. Satin finish blade with sharpened top edge. Original brown leather sheath with sharpening stone in pocket. Shipped to original customer in 1994. Comes with period Randall catalog.

KLSP91894 _____ \$ 655.00



Tom Mayo - Custom XL Bowie Frame Lock

Folder, 4 1/8" Clip Point, Stellite, Titanium Frame, 5 5/8" Closed, Pre-owned. Not used or carried. Bead-blasted titanium handle scales with milled holes. Stellite 6K blade (marked 6K on reverse). Bead blast titanium pocket clip for tip-up carry. Excellent condition. Ships in zippered pouch.

KLSP91911 _____ \$ 2070.00



John H. Davis - Damascus Fighter

Fixed Blade, Hidden Tang, 8" Blade, Damascus Steel, Buffalo Horn Handle, Nickel Silver Guard, Nickel Silver Pommel, 13" OAL, Pre-owned. Not used or carried. Silver Streak Damascus with false top edge. The mammoth tooth spacer contrasts nicely with the buffalo horn handle. Brown leather sheath has a stingray inlay.

KLSP91913 _____ \$ 1075.00



William "Bill" Miller - Hunter

Fixed Blade, Hidden Tang, 3 1/4" Blade, Damascus Steel, Dyed Curly Maple Handle, Stainless Guard, 7 3/4" OAL, Pre-Owned. Not used or carried. 256 layer damascus of 15N20 tool steel and 1080 spring steel. Dyed and stablized curly maple handle is green with goldish grain. Wildebeest skin leather sheath. Ships in zippered case.

KLSP91915 _____ \$ 495.00



John H. Davis - RC Flipper Folder

Folder, 3" Blade, Damascus Steel, Mammoth Tooth Handle Scales, Damascus Bolsters, Titanium Liners, Damascus Backspacer, 4 1/16" Closed, Pre-owned. Not used or carried. Twist pattern damascus blade of 1095/15N20. Ball bearing pivot. Fire damascus bolsters. Beautifully colored mammoth tooth scales. Linerlock. Ships in zippered case.

KLSP91916 _____ \$ 785.00



W.D. Pease - Side Lock

Folder, 3 3/8" Blade, ATS-34 Stainless, Ram's Horn Handle Scales, Damascus Bolsters, Stainless Liners, Damascus Lock, 4 1/2" Close, Pre-owned. Not used or carried. Satin finish blade with maker's mark on obverse and "45SM20" on reverse blade. Mosaic damascus bolsters. Beautifully matched ram's horn scales. Filework on back spring. Micarta spacer. Ships in zippered case.

KLSP91917 _____ \$ 1260.00



Suchat Jangtanong - Linerlock

Folder, 2 3/4" Blade, Mosaic Damascus, Carved Black Lip Pearl Scales, Damascus Bolsters, Titanium Liners, 4" Closed, Pre-owned. Not used or carried. Mosaic damascus blade and bolsters. Filework on partial spine, liners and backspacer. Colorful black lip pearl scales. Bolsters and handle have the same fluting pattern. Black lip pearl inset in thumb stud. Ships in zippered case.

KLSP91918 _____ \$ 855.00



Tommy Lee - Clip Point Lockback

Folder, 3" Blade, Damascus Steel, Mother-of-Pearl Handle Scales, Stainless Liners, Damascus Shield, 4" Closed, Pre-owned. Not used or carried. Damascus blade with maker's name on ricasso. Fiery mother-of-pearl scales with damascus shield (both sides). Filework on liners. Gold plated screws. Ships in zippered case.

KLSP91920 _____ \$ 475.00



Rob Hudson - Trailing Point Hunter

Fixed Blade, Hidden Tang, 4 1/4" Blade, CPM-154 Stainless, Sambar Stag/Amboyna Burl Hndl, Stainless Guard, Stainless Pommel, 8 1/2" OAL, Pre-owned. Not used or carried. Mirror polish blade with maker's initials in ricasso. Figured amboyna spacer with nice stag handle. Black fiber and nickel silver spacers. Brown leather sheath. Includes paperwork from the maker.

KLSP91928 _____ \$ 675.00



Bob Lay - Personal Hunter

Fixed Blade, Hidden Tang, 3 7/8" Blade, 440C Stainless, 58 Rc., Dyed Box Elder Handle, Stainless Guard, Stainless Butt Cap, 7 3/4" OAL, Pre-owned. Not used or carried. Dual blade finish with light filework on the spine. Maker's name on reverse blade. Black fiber, nickel silver and sheephorn spacers. Deep green with gold hue box elder handle. Original brown leather sheath. Ships in zippered case. Comes with Certificate of Authenticity.

KLSP91929 _____ \$ 565.00



Bob Lay - Personal Hunter

Fixed Blade, Hidden Tang, 3 7/8" Blade, 440C Stainless, 58 Rc., Buffalo Horn Handle, Stainless Guard, Stainless Butt Cap, 8" OAL, Pre-owned. Not used or carried. Dual finish blade with light filework on the spine. Maker's name on reverse blade. Black fiber, nickel silver and dyed gray maple burl handle. Original black basketweave leather sheath from the maker. Ships in zippered case.

KLSP91930 _____ \$ 565.00



R.L. (BOB) Dozier - Chute Knife - Loveless/Archer

Fixed Blade, Full Tapered Tang, 4 3/4" Blade, D2, 59-61 Rc., Green Canvas Micarta Scales, Stainless Dbl Guard, Thong Hole, 9 5/8" OAL, New. Mirror polish clip point blade. Dark green canvas micarta scales. Solidly built leather sheath by Dozier.

KLSP91935 _____ \$ 895.00



R.L. (BOB) Dozier - Loveless Style Dagger

Fixed Blade, Full Tapered Tang, 5 1/8" Blade, D2, 60-61 Rc., Green Canvas Micarta Scales, Stainless Guard, Thong Hole, 9 1/2" OAL, New. Mirror polish blade with false top edge. Dark green micarta scales. Brown leather sheath from the maker.

KLSP91936 _____ \$ 895.00



R.L. (BOB) Dozier - Loveless Style Fighter

Fixed Blade, Full Tapered Tang, 5 1/8" Blade, D2, 60-61 Rc., Green Canvas Micarta Scales, Stainless Dbl Guard, Thong Hole, 9 3/4" OAL, New. Mirror polish blade with false top edge. Dark green micarta scales. Brown leather sheath from the maker.

KLSP91937 _____ \$ 895.00

*Do you have knives you'd like
to sell in our catalog?*

E-mail Debbie at ce_info@cuttingedge.com



Randy Lee - Dagger

Fixed Blade, Hidden Tang, 6" Blade, CPM-154 Stainless, 59-60 Rc., Thuya Wood Handle, Nickel Slv Dbl Hilt, Nickel Slv Pommel, 11" OAL, New. Not used or carried. Mirror polish blade is double-edged. Silver blue Norway spruce spacers with black fiber, red fiber and nickel silver spacers compliment the figured thuya wood handle. Hand-tooled brown leather sheath by Sonja Lee.

KLSP91941 _____ \$ 1195.00



M. Larsen - Integral Hunter

Fixed Blade, Narrow Tang, 4" Blade, D2, Stag Round Handle, Integral Guard, Stainless Butt, 8 3/4" OAL, Pre-owned. Not used or carried. Mirror polish blade with maker's logo on obverse blade. Nice stag round with black, stainless and turquoise spacers. Brown leather lightly tooled sheath included.

KLSP91952 _____ \$ 675.00



A.B. Schaller - Barlow Slipjoint

Folder, 2 1/2" Blade, CPM-154 Stainless, Blue Linen Micarta Scales, Stainless Bolsters, Stainless Liners, 3 3/8" Closed, New from maker. Satin finish blade with long nail nick. Typical long Barlow stainless bolsters. Nice action. Ships in zippered case.

KLSP91943 _____ \$ 495.00



John Greco - Buffalo Skinner

Fixed Blade, Narrow Tang, 6" Blade, High Carbon Steel, Stacked Leather/Elk Stag Hndl, Aluminum Guard, 11 1/4" OAL, Pre-owned. Not used or carried. Satin finish blade. Maker's name stamped on guard. Light scuff marks on guard. Black and aluminum spacers. No sheath.

KLSP91953 _____ \$ 535.00



Barrett & Clair - Damascus Hunter

Fixed Blade, Full Tapered Tang, 3" Blade, Damascus Steel, Stag Handle Scales, Stainless Guard, Thong Hole, Engraved Pins, 7 1/2" OAL, Pre-owned. Not used or carried. Damascus blade. Guard is marked "Barrett & Clair - Waco, Texas - Damascus Steel" and has floral engraving on both sides, along the top tang and the pins. The back stag handle is more smooth than the obverse side but very nice presentation. Ships in zippered case.

KLSP91945 _____ \$ 495.00



John Greco - Large Buffalo Skinner

Fixed Blade, Narrow Tang, 7 1/2" Blade, High Carbon Steel, Stacked Leather/Elk Stag Hndl, Aluminum Guard, 12 1/2" OAL, Pre-owned. Not used or carried. Satin finish blade. Maker's name on guard. Elk stag handle has stacked leather with red, brass, aluminum and stacked leather spacers. No sheath. Ships in zippered case.

KLSP91954 _____ \$ 625.00



Larry Duvall - Lockback

Folder, 2 7/8" Blade, Unknown Steel, Stainless Frame, Stag Inlay, 3 7/8" Closed, Pre-owned. Not used or carried. Satin finish blade with maker's name/logo on obverse side. Sambar stag inlay. Nice action. Excellent condition.

KLSP91947 _____ \$ 540.00



Boggs - Vintage Ring Dagger

Fixed Blade, Hidden Tang, 6 3/4" Blade, Unknown Steel, Stabilized Fluted Oak Handle, Stainless Dbl Hilt, Nickel Silver Pommel, Wire Wrapped Handle, 11 3/8" OAL, Pre-owned. Not used or carried. Ornamental dagger, it is not sharpened. Mirror polish blade with fuller down the center. Fancy, decorative double hilt has ring in the center. Nickel silver collars. Nice wood handle has a tiny chip and is wire wrapped. Black leather sheath from the maker has removable scabbard with stainless throat and tip. Ships in zippered case.

KLSP91956 _____ \$ 855.00



Larry Duvall - Lockback

Folder, 2 7/8" Blade, Unknown Steel, Stainless Steel Frame, Wooly Mammoth Inlay, 3 7/8" Closed, Pre-owned. Not used or carried. Satin finish blade with maker's name/logo on obverse side. Wooly mammoth insert (each side). Filework around the entire frame. Nice action. Excellent condition.

KLSP91948 _____ \$ 630.00



Steve Powers - Skinner

Fixed Blade, Tapered Tang, 4 1/4" Blade, 154CM Stainless, 60 Rc., Pink Sweet Gum Pod Scales, Stainless Bolsters, Thong Hole, Red Liners, 8 3/8" OAL, New from maker. Mirror polish blade with jimping and light filework on the spine. Colorful, unique handle scales with dovetailed bolsters. Light filework on tang. Hot-waxed leather sheath from the maker.

KLSP91960 _____ \$ 510.00



Larry Page - Slim Fighter

Fixed Blade, Full Tapered Tang, 7" Blade, 154CM Stainless, Stag Handle Scales, Stainless Guard, Black Liners, 11 3/8" OAL, Pre-owned. Not used or carried. Mirror polish blade with maker's name on obverse side. Nicley matched stag scales. Brown leather sheath has "1837 01" marked on the reverse side.

KLSP91951 _____ \$ 495.00



Steve Powers - Hunter

Fixed Blade, Tapered Tang, 3 3/4" Blade, 154CM Stainless, 60 Rc., Spalted Maple w/Blue Scales, Stainless Bolsters, Thong Hole, Blue Liners, 7 7/8" OAL, New from maker. Mirror polish blade with filework. Combination spalted maple and blue acrylic handle scales. Dovetailed bolsters. Brown hot-waxed leather sheath from the maker.

KLSP91961 _____ \$ 510.00



Shane Sloan - Skinner

Fixed Blade, Hidden Tang, 4 1/8" Blade, D2, Sambar Stag Handle, Stainless Guard, Sambar Stag Butt Cap, 9" OAL, Pre-owned. Not used or carried. Dual satin and mirror polish finish blade. Premium stag round with desert ironwood, stainless and red fiber spacers. Brown leather sheath with light tooling. Ships in zippered case.

KLSP91964 _____ \$ 430.00



G.C. Grooms - Fighter

Fixed Blade, Full Tang, 4 1/2" Blade, ATS-34 Stainless, Acrylic Handle Scales, Brass Bolsters, Black Liners, 9" OAL, Pre-owned. Not used or carried. Bead blast finish blade with false top edge. Hornet's Nest Blue acrylic handle scales with six mosaic pins on each side. Slight scuff on obverse bolster from sheath storage. Black leather sheath with light tooling. Ships in zippered case.

KLSP91965 _____ \$ 400.00



Mark (Burr Oak Knives) Nevling - Drop Point Hunter

Fixed Blade, Hidden Tang, 3" Blade, Damascus Steel, White Tail Antler Handle, Copper Guard, 6 7/8" OAL, Pre-owned. Not used or carried. Cable-pattern damascus. Ironwood and brass spacers. Leather dangler sheath with ostrich overlay. Certificate of Authenticity states date of completion as 6/13/22. Ships in zippered case.

KLSP91966 _____ \$ 425.00



Kevin Casey - Vintage (early 2000s) Fighter

Fixed Blade, Hidden Tang, 5 1/2" Blade, Damascus Steel, Ironwood Handle, Brass Double Hilt, Mosaic Pin, 9 1/2" OAL, Pre-owned. Little use or carry, if any. Forged damascus blade with maker's name and mark on obverse side. Nicely figured ironwood handle. Custom brown leather brown leather sheath with snakeskin inlay by Gray Knives. Knife has been stored in sheath.

KLSP91967 _____ \$ 620.00



Ricardo Perpina - Loveless-Style Hunter

Fixed Blade, Full Tapered Tang, 5 3/8" Blade, 420HC Stainless, Ebony Handle Scales, Stainless Guard, Thong Hole, Red Liners, 9 7/8" OAL, New from maker. Mirror polish blade. Exotic ebony wood handle scales. Brown Argentine leather sheath.

KLSP91968 _____ \$ 605.00



Jerry Lairson - Clip Point Hunter

Fixed Blade, Hidden Tang, 8" Blade, Carbon Steel, Exotic Beefwood Handle Scales, Nickel Slv Dbl Hilt, 13" OAL, Pre-owned. Not used or carried. Satin finish blade with false top edge on clip. Decorative hilt. No sheath.

KLSP91971 _____ \$ 1095.00



Joe Flournoy - Skinner

Fixed Blade, Hidden Tang, 5 1/2" Blade, Carbon Steel, Ironwood Handle, Nickel Silver Collar, 10 1/4" OAL, Pre-owned. Not used or carried. Satin finish blade with '006' on reverse blade. Nicely figured ironwood. Brown leather sheath is stamped FLOURNOY 006.

KLSP91973 _____ \$ 550.00



Charles Sisemore - Damascus Hunter

Fixed Blade, Hidden Tang, 6 7/8" Blade, Damascus Steel, Stag Handle, Nickel Silver Guard, Ni Slv Butt Plate, 11 1/2" OAL, Pre-owned. The knife appears to have been stored in sheath with no use. Carbon steel damascus. Very nice stag handle. The tooled basketweave leather sheath appears to have been worn and used and was most likely used to store the knife. It is in good condition with some wear at the belt loop and snap.

KLSP91974 _____ \$ 435.00



John H. Davis - Flipper Linerlock

Folder, 3 3/4" Blade, Damascus Steel, Mammoth Tooth Handle Scales, Damascus Bolsters, Blue Titanium Liners, Titanium Backspacers, 4 3/4" Closed, Pre-owned. Not used or carried. Fire pattern damascus comprised of 1095/15N20 with a fuller on each side. Ball bearing action. Closely matching dark mammoth tooth scales. Leather belt pouch with metal clip. Ships in black zippered case.

KLSP91975 _____ \$ 795.00



Nate Clark - Drop Point Linerlock

Folder, Single Grooved Handle, 3" Blade, 440C Stainless, Red Jigged Bone Scales, Blue Titanium Liners, 3 3/4" Closed, Pre-owned. Not used or carried. Hand-rubbed satin finish blade. Thumb stud with green stone inlay. Red jigged bone scales with nickel silver inlay with abalone inlay. Blue anodized titanium liners. Titanium backspacer. Ships in black zippered case.

KLSP91976 _____ \$ 435.00



Andre Thorburn - Hunter

Fixed Blade, Full Tang, 3" Blade, Unknown Steel, Maroon Giraffe Bone Scales, 7" OAL, Pre-owned. Not used or carried. Satin finish, hollow ground blade with laser engraved depiction of two bull elephants, along with maker's mark on the obverse. Smooth, dyed giraffe bone scales. Stippled stainless bolsters. Very nice black leather pouch-style sheath.

KLSP91977 _____ \$ 435.00



Steve Schwarzer - Damascus Friction Folder

Folder, 3" Blade, Damascus Steel, Crown Stag Handle, Silver Pin w/Washer, 4" Stag Handle, Pre-owned. Not used or carried. Patterned damascus blade with filework and maker's mark on obverse side. Smooth action. Early Schwarzer, Master Bladesmith knife. Ships in zippered case.

KLSP91988 _____ \$ 1415.00



Suchat Jangtanong - Linerlock

Folder, 2 1/8" Blade, Stainless Damascus, Stainless Damascus Scales, Titanium Liners, 10 Diamond Insets, 4" Closed, Pre-owned. Not used or carried. Chad Nichols damascus blade and carved handle in Mokutri pattern. Heavy filework on top liners and backspacer. Diamond in thumb stud and strategically placed in nine other locations. Certificate of Authenticity states date of completion as 5/15/13. Ships in zippered case.

KLSP91982 _____ \$ 570.00



Howard Clark - Straight Razor

Fixed Blade, 3 1/4" Cutting Edge, Damascus Steel, Hand-Forged, Mammoth Bark Ivory Scales, Copper Ornate Pins, 7 1/4" Closed, Pre-owned. Not used or carried. Hand-forged damascus blade. Mammoth bark ivory scales (closely matched). Copper cup & brush shield onlay. Very sharp. Ships in zippered case.

KLSP91991 _____ \$ 645.00



Suchat Jangtanong - Linerlock

Folder, 3 1/8" Blade, False Top Edge, Damascus Steel, Mastodon Ivory Handle Scales, Carved SS Bolsters, Titanium Liners, Titanium Frame, 4 5/8" Closed, Pre-owned. Not used or carried. Adam and Eve scrimshaw by Panja Pojiew on mastodon ivory scales. Anodized titanium liners have filework. Titanium and mastodon ivory backspacers have two citrine stones. Certificate of Authenticity states date of completion as 10/1/11. Ships in zippered case.

KLSP91983 _____ \$ 1415.00



Rodger "Tiny" Spencer - Engraved Sub-Hilt Fighter

Fixed Blade, Hidden Tang, 11 1/2" Blade, Double-Edged, D2, Mammoth Ivory Handle, Brass Double Hilt, Red Spacers, 17 1/2" OAL, Pre-owned. Not used or carried. Mirror polish blade with engraving down the center (both sides). Engraved brass hilts. Very colorful and substantial mammoth ivory handle. Beautiful display piece. No sheath. Ships in zippered case.

KLSP91993 _____ \$ 1130.00



Bert Gaston - Damascus Hunter

Fixed Blade, Full Narrow Tang, 5 1/8" Blade, Carbon Damascus, Stag Handle, Nickel Silver Hilt, Nickel Slv Butt Cap, Nickel Silver Collar, 9 1/2" OAL, Pre-owned. Not used or carried. Nicely patterned damascus and beautiful stag. Hammered double guard and collar. Maker's name with 'MS' mastersmith designation on obverse blade. Excellent fit and finish. No sheath.

KLSP91985 _____ \$ 885.00



Loyd McConnell - Titanium Framelock

Folder, 1 7/8" Blade, ATS-34 Stainless, Blue Anodized Titanium Frame, Scrimshaw Shield, 2 3/4" Closed, Pre-owned. No use or carry. The blue titanium frame has a very faint scratch mark from storage. The colorful sunfish scrimshaw is by Linda Karst Stone. 2-tone blade finish. Ships in zippered case.

KLSP91994 _____ \$ 445.00



Bert Gaston - Hunter

Fixed Blade, Full Narrow Tang, 4 1/4" Blade, Mosaic Damascus, Stag Handle Scales, Nickel Silver Guard, Nickel Silver Collar, 8 3/8" OAL, Pre-owned. Not used or carried. Forged mosaic damascus blade with maker's stylized 'G' mark on obverse side. The mastersmith designation "MS" on reverse blade. Coin edge on double guard and collar. Excellent fit and finish from this ABS Hall of Fame member. No sheath.

KLSP91986 _____ \$ 885.00



Harold Corby - Big Game Skinner

Fixed Blade, Full Tapered Tang, 5 3/4" Blade, 440C Stainless, Stag Handle Scales, Nickel Slv Bolsters, Red Liners, 10 5/8" OAL, Pre-owned. Not used or carried. Mirror polished blade and bolsters. Some light scratches on reverse blade and bolsters. It has been stored in the sheath. Maker's name on the obverse and '02' on the reverse ricasso. Dark brown leather sheath from the maker.

KLSP91996 _____ \$ 530.00

*Do you have knives you'd like
to sell in our catalog?
E-mail Debbie at ce_info@cuttingedge.com*



James B. "Jimmy" Lile - Custom Bowie

Fixed Blade, Hidden Tang, 9" Blade, False Top-Edge, Unknown Steel, Wood Handle, Stainless Dbl Hilt, Stainless Pommel, 14" OAL, D'Holder Collection. A trade with Jimmy Lile. Satin finish blade with LILE marked on the obverse ricasso. Polished hilt, collar and pommel. Spiral fluted wood handle. Some light storage marks on the hilt, otherwise pristine condition. No sheath.

KLSP91997 _____ **\$ 2150.00**



Terry "TC" Roberts - Hunter

Fixed Blade, Narrow Tang, 3 7/8" Blade, 154CM Stainless, Koa Wood Handle, Cast Bronze Guard, Cast Bronze Butt, Red Spacer, 8 7/16" OAL, New from maker. Mirror polish blade finish. Koa wood handle hand-cast bronze guard and butt cap. A copper and silver inlay of a cattail is on the obverse bolster while a soaring Great Blue Heron is on reverse. The butt plate has a bird foot mark. Tooled leather sheath from Parsons.

KLSP91998 _____ **\$ 535.00**



M.J. (Mike) Smith - Engraved Hunter

Fixed Blade, Full Tapered Tang, 4 1/2" Blade, L-6 Carbon, Jigged Bone Handle Scales, 416 SS Bolsters, Red Liners, 9" OAL, New from maker. Hand-rubbed satin finish blade. Rootbeer colored jigged bone handle scales. Engraved bolsters by Ken Smith. Five point star pins. Brown tooled leather sheath.

KLSP92000 _____ **\$ 650.00**



M.J. (Mike) Smith - Hunter

Fixed Blade, Full Tapered Tang, 3 7/8" Blade, CPM-154 Stainless, Wooly Mammoth Ivory Scales, 416 SS Bolsters, 8" OAL, New from maker. Hand-rubbed satin finish blade. Well-matched mammoth ivory handle scales. Five point star pins. Hand-tooled brown leather sheath from Mark Condos.

KLSP92001 _____ **\$ 700.00**



M.J. (Mike) Smith - Linerlock

Folder, 3 1/2" Blade, Wave Damascus, Mammoth Bone Handle Scales, 416 SS Bolsters, Titanium Liners, 4 1/2" Closed, New from maker. Copper wavy damascus GoMai blade with textured thumb stud. Long bolsters with engraving by Dale Bass (signed). Filework on backspacer. Ships in zippered case.

KLSP92002 _____ **\$ 1195.00**



Pete Truncali - Lockback

Folder, 2 11/16" Blade, CPM-154 Stainless, Mammoth Ivory Handle Scales, Stainless Bolsters, Stainless Liners, 3 3/4" Closed, New from maker. Hand-rubbed satin finish blade with nail nick and partial filework. Hammered stainless bolsters. Filework on lockbar. Ships in zippered case.

KLSP92003 _____ **\$ 695.00**



Pete Truncali - Lockback

Folder, 2 5/8" Blade, Damasteel, California Buckeye Scales, Stainless Bolsters, Stainless Liners, 3 5/8" Closed, New from maker. Bifrost pattern Damasteel blade with nail nick. Hammered stainless bolsters. Colorful buckeye handle scales. Filework on lockbar. Ships in zippered case.

KLSP92004 _____ **\$ 695.00**



Pete Truncali - Lockback

Folder, 2 1/8" Blade, Damasteel, Wooly Mammoth Ivory Scales, Stainless Bolsters, Stainless Liners, 3" OAL, New from maker. Polished Damasteel blade with nail nick. Hammered stainless bolsters. Well-matched mammoth ivory scales. Filework on the lockbar. Ships in zippered case.

KLSP92005 _____ **\$ 650.00**



Pete Truncali - Lockback

Folder, 2 5/8" Blade, CPM-154 Stainless, Jigged Bone Handle Scales, Stainless Bolsters, Stainless Liners, 3 3/4" Closed, New from maker. Satin finish blade with nail nick and partial filework on the spine. Hammered stainless bolsters. Nicely patterned jigged bone in a caramel color. Filework on the lockbar. Ships in zippered case.

KLSP92006 _____ **\$ 575.00**



Pete Truncali - Lockback

Folder, 2 3/4" Blade, CPM-154 Stainless, Natural Armadillo Scales, Stainless Bolsters, Red Liners, 3 5/8" Closed, New from maker. Satin finish blade with nail nick and partial filework on the spine. Hammered stainless bolsters. Tiered armadillo scales. Filework on the lockbar. Ships in zippered case.

KLSP92007 _____ **\$ 695.00**

All fixed blade knives include a sheath unless otherwise stated.



Jim Dunlap - Trapper

Folder, 3 1/8" Clip Blade, 3 1/8" Spey Blade, CPM-154 Stainless, Stag Handle Scales, Stainless Bolsters, Stainless Frame, Stainless Shield, 4" OAL, New from maker. Hand-rubbed satin finish blades with nail nicks and filework. Beautifully matched stag handle scales. Stainless steel bomb pattern shield. Filework on the backspring. Ships in zippered case.

KLSP92008 _____ \$ 1250.00



Jim Dunlap - Slipjoint Skinner

Folder, 3" Blade, CPM-154 Stainless, Vintage Brown Micarta Scales, Stainless Bolsters, Stainless Frame, Stainless Shield, 3 7/8" OAL, New from maker. Hand-rubbed satin finish blade with forward nail nick. Pinched stainless bolsters. Matched micarta scales. Pinched bolsters. Stainless back spring. Ships in zippered case.

KLSP92009 _____ \$ 750.00



Jim Dunlap - Hunter Trader Trapper

Folder, 3 1/8" Blade, 3 1/8" Clip Point Blade, CPM-154 Stainless, Jugged Bone Handle Scales, Stainless Bolsters, Stainless Frame, Stainless Shield, 3 7/8" Closed, New from maker. Hand-rubbed satin finish blades with long nail pulls. Rootbeer colored jugged bone scales. Stainless bullet shield. Stainless back spring. Ships in zippered case.

KLSP92010 _____ \$ 850.00



Jim Dunlap - Wharncliffe Trapper

Folder, 3" Clip Blade, 3" Wharncliffe Blade, CPM-154 Stainless, Amber Stag Handle Scales, Stainless Bolsters, Stainless Frame, Stainless Shield, 3 5/8" OAL, New from maker. Hand-rubbed satin finish blades with nail nicks. Well matched amber stag scales. Excellent action. Ships in zippered case.

KLSP92011 _____ \$ 950.00



Bobby House - Fat Zulu

Folder, 2 7/8" Blade, CPM-154 Stainless, WWII German Rag Micarta Scales, Stainless Bolsters, Stainless Frame, Stainless Shield, 3 7/8" Closed, New from maker. Hand-rubbed satin finish blade with long nail pull. Interesting vintage micarta handle scales have a nice swirl pattern. Polished stainless diamond shaped shield. Includes Certificate of Authenticity and ships in maker's ostrich print zippered case.

KLSP92012 _____ \$ 1250.00



Bob Merz - Lockback

Folder, 2 3/4" Blade, CTS-XHP Carpenter Steel, 416 Stainless Steel Frame, Faux Tortoise Inlay, 3 5/8" Closed, New from maker. Mirror polish blade and frame. Striking faux tortoise shell inlays. Stainless lockbar. Ships in zippered case.

KLSP92013 _____ \$ 825.00



Tony Baker - Lockback Interframe

Folder, 3 7/8" Upswept Blade, CPM-154 Stainless, 416 Stainless Steel Frame, 5 1/4" Closed, New from maker. Mirror polish blade with nail nick and maker's name on obverse side. Blue Fat Carbon Fiber inlays outline a snake. 100% handcrafted. Very smooth opening/closing. Ships in zippered pouch.

KLSP92014 _____ \$ 2500.00



Mike Tyre - Cholla Fine Gentlemens Folder

Folder, Linerlock, 3 1/4" Blade, Mosaic Damascus, Fossil Mastadon Tusk Scales, Damascus Bolsters, Titanium Liners, 4 1/4" Closed, New from maker. Blade and bolsters are matching and from the same billet of mosaic damascus with a crosses and wheat theme. Hand forged by maker. Custom machined thumb stud with andalusite jewel. 18k gold screws hold the brown and blue bark fossilized mastadon tusk scales in place. Jeweled, gold anodized liners. Rope patterend filework on backspring. Includes signed letter from maker with details on the production of this knife. Ships in zippered case.

KLSP92015 _____ \$ 2200.00



Mike Tyre - Cowboy Carry Lockback

Folder, 2 3/4" Blade, Damascus Steel, Arctic Muskox Handle Scales, Damascus Bolsters, Damascus Frame, 3 3/4" Closed, New from maker. Damascus pattern on blade, bolsters and frame is multi-bar Turkish twist. Milled one piece integral model with matching lockbar. Lockbar release has filework crown. All work handcrafted by the maker. Ships in zippered case.

KLSP92016 _____ \$ 1000.00

Find More Knives at

cuttingedge.com



Mike Tyre - Chef Knife

Fixed Blade, Hidden Tang, 8 5/16" Blade, Damascus Steel, Splated Sycamore Wood Handle, 13 1/2" OAL, New from maker. Integral design with Sound Waves Damascus pattern forged by maker. Highly figured stabilized spalted sycamore wood handle. Beautiful presentation. Ships in zippered case.

KLSP92017 _____ \$ 1200.00



Wayne Whittaker - Lockback

Folder, 3" Blade, ATS-34 Stainless, Mammoth Ivory Handle Scales, Damascus Bolsters, Titanium Liners, 4 3/4" Closed, New from maker. Mirror polish blade with nail nick. Ladder pattern damascus bolsters. Fileworked blue anodized titanium liners. Filework on lockbar. Well-matched mammoth ivory scales with blue and brown coloration. Ships in zippered case.

KLSP92018 _____ \$ 1100.00



Wayne Whittaker - Lockback

Folder, 2 1/2" Blade, ATS-34 Stainless, Mammoth Ivory Handle Scales, Damascus Bolsters, Titanium Liners, 4 1/8" Closed, New from maker. Mirror polish blade with nail nick. Mosaic damascus bolsters. Well-match mammoth handle scales. Blue anodized titanium liners have filework all around as does the lockbar. Ships in zippered case.

KLSP92019 _____ \$ 950.00



Wayne Whittaker - Lockback

Folder, 2 1/2" Blade, Damascus Steel, Mammoth Ivory Handle Scales, Damascus Bolsters, Titanium Liners, 4" Closed, New from maker. Ladder pattern damascus blade. Mosaic damascus bolsters compliment the brownish mammoth ivory handle scales. Hammered blue titanium liners. Filework on the lockbar. Ships in zippered case.

KLSP92020 _____ \$ 925.00



Wayne Whittaker - Lockback

Folder, 2 1/4" Blade, 440C Stainless, Mammoth Tooth Handle Scales, Damascus Bolsters, Titanium Liners, 3 7/8" OAL, New from maker. Mirror polish blade with nail nick. Raindrop pattern damascus bolsters. Colorful mammoth tooth scales. Filework on liners and lockbar. Ships in zippered case.

KLSP92021 _____ \$ 775.00



Rick Nowland - Linerlock

Folder, 3 1/2" Blade, D2, Stag Handle Scales, 416 SS Bolsters, Titanium Liners, 4 3/8" Closed, New from maker. Satin finish blade with thumb stud. Nice stag scales. Ships in zippered case.

KLSP92022 _____ \$ 500.00



Rick Nowland - Cotton Sampler Slipjoint

Folder, 3 1/8" Blade, CPM-154 Stainless, Westinghouse Micarta Scales, 416 SS Bolsters, Integral SS Liners, Stainless Shield, 4 3/4" Closed, New from maker. Hand-rubbed satin finish blade with nail nick is half-stop. Integral pinched bolsters and milled liners. Vintage Westinghouse micarta handle scales. Stainless bomb shield. Excellent action. Ships in zippered case.

KLSP92023 _____ \$ 575.00



Steve Powers - Hunter

Fixed Blade, Finger Grooved Handle, Full Tapered Tang, 3 3/4" BLade, 154CM Stainless, 60 Rc., Burgundy Acrylic Handle Scales, Stainless Bolsters, Thong Hole, Red Liners, 8 1/4" OAL, New from maker. Mirror polish blade filework on the spine. Stainless dove-tailed bolsters. Dark burgundy, highly figured acrylic scales. Light filework on tang. Hot-waxed brown leather sheath with light tooling from the maker.

KLSP92024 _____ \$ 625.00



Steve Powers - Hunter

Fixed Blade, Grooved Handle, Full Tapered Tang, 4" Blade, 154CM Stainless, 60 Rc., Desert Ironwood Handle Scales, Stainless Bolsters, Thong Hole, Red Liners, 8 1/2" OAL, New from maker. Mirror polish blade with jimping and light filework. Stainless dove-tailed bolsters. Nicely figured ironwood scales. Light filework on tang. Hot-waxed brown leather sheath with light tooling from maker.

KLSP92025 _____ \$ 695.00



Steve Powers - Skinner

Fixed Blade, Finger Grooved Handle, Full Tapered Tang, 4 1/4" Blade, 154CM Stainless, 60 Rc., Blue Curly Maple Handle Scales, Stainless Bolsters, Thong Hole, Blue Liners, 9" OAL, New from maker. Mirror polish blade with jimping and light filework on the spine. Stainless dove-tailed bolsters. Dyed blue curly maple scales. Light filework on the tang. Hot waxed brown leather sheath with light tooling from the maker.

KLSP92026 _____ \$ 695.00



Steve Powers - Skinner

Fixed Blade, Contoured Handle, Full Tapered Tang, 4 1/4" Blade, 154CM Stainless, 60 Rc., Purple Karelian Birch Scales, Stainless Bolsters, Thong Hole, Black Liners, 9" OAL, New from maker. Mirror polish blade with jimping and light filework. Stainless dove-tailed bolsters. Karelian Birch dyed deep purple handle scales. Light filework on tang. Hot-waxed brown leather sheath with light tooling from maker.

KLSP92027 _____ \$ 695.00



Deryl Wright - Classic Hunter

Fixed Blade, Full Tapered Tang, 3 3/4" Blade, CTS-XHP Carpenter Steel, 60.5 Rc. Cyro Treat, Desert Ironwood Handle Scales, Nickel Silver Guard, Thong Hole, Red Liners, 8 1/8" OAL, New from maker. Mirror polish blade. Nicely grained ironwood scales. Handmade brown leather pouch style sheath from maker.

KLSP92028 _____ \$ 695.00



Deryl Wright - Hunter

Fixed Blade, Full Tapered Tang, 3 3/4" Blade, CTS-XHP Carpenter Steel, 60.5 Rc. Cyro-Treat, Desert Ironwood Handle Scales, Nickel Silver Guard, Thong Hole, Red Liners, 7 3/4" OAL, New from maker. Mirror polish blade. Ironwood handle scales have nice grain. Handmade brown leather sheath from maker.

KLSP92029 _____ \$ 595.00



Deryl Wright - Elmer Keith Style Hunter

Fixed Blade, Narrow Tang, 5" Blade, CTS-XHP Carpenter Steel, 60.5 Rc. Cyro-Treat, Desert Ironwood Handle, Nickel Silver Guard, Nickel Silver Butt, Red & White Spacers, 10" OAL, New from maker. Mirror polish blade. Figured and polish ironwood handle. Handmade brown leather sheath from maker.

KLSP92030 _____ \$ 675.00



Deryl Wright - Elmer Keith Style Hunter

Fixed Blade, Narrow Tang, 5" Blade, CTS-XHP Carpenter Steel, 60.5 Rc. Cyro-Treat, Desert Ironwood Handle, Nickel Silver Guard, Nickel Silver Butt, Red Spacers, 10" OAL, New from maker. Mirror polish blade. Beautifully polished ironwood handle. Handmade brown leather sheath from the maker.

KLSP92031 _____ \$ 675.00



Deryl Wright - Bowie

Fixed Blade, Narrow Tang, 9" Blade, CTS-XHP Carpenter Steel, 60.5 Rc. Cryo-Treat, Desert Ironwood Handle, Brass Double Hilt, Brass Butt, Red/Wht/Black Spacer, 14 1/2" OAL, New from maker. Mirror polish blade. Hefty ironwood handle has fine grain. Handmade brown leather sheath from maker.

KLSP92032 _____ \$ 850.00



Wardman Custom Knives - Custom Hunter

Fixed Blade, Hidden Tang, 4 1/8" Blade, CPM-154 Stainless, Sambar Stag Handle, Brass Guard, Brass Butt Cap, Amboyna Spacer, 8 7/8" OAL, Pre-owned. Not used or carried. Mirror polish blade with maker's logo on ricasso. Premium stag handle with an amboyna burl spacer. Dark brown leather sheath with snap from the maker.

KLSP92033 _____ \$ 800.00



T.K. (Tim) Steingass - Custom Hunter

Fixed Blade, Full Tapered Tang, 4" Blade, Damascus Steel, Tiger Koa Wood Handle, Stainless Guard, Thong Hole, Red Liners, 8 1/2" OAL, Pre-owned. Not used or carried. Large pattern damascus blade contrasts nicely with the tiger stripe koa wood handle. Brown leather pouch-style sheath from the maker.

KLSP92034 _____ \$ 850.00



Charles West - Bowie

Fixed Blade, Hidden Tang, 7 1/2" Blade, ATS-34 Stainless, Sambar Popcorn Stag Handle, Stainless Dbl Hilt, Stainless Pommel, 12 3/4" OAL, Pre-owned. Not used or carried. Mirror polish blade. Scalloped stainless double hilt. Impressive stag handle. Custom brown leather sheath by Schrap Knife Sheaths.

KLSP92035 _____ \$ 1600.00



Jesse Davis - Hunter

Fixed Blade, Full Tang, 4 1/8" Blade, 440C Stainless, Dyed Maple Burl Handle Scales, Brass Guard, Brass Pins, 9 5/8" OAL, New from maker. Mirror polish blade with maker's name on reverse ricasso. Contrasting brass fittings. Stabilized and dyed green and brown maple burl handle scales. Brown leather sheath from the maker.

KLSP92036 _____ \$ 500.00



Jesse Davis - Double-Edged Dagger

Fixed Blade, Hidden Tang, 4" Blade, 440C Stainless, Sambar Stag Handle, Nickel Silver Guard, Nickel Silver Butt, Turquoise Spacer, 9" OAL, New from maker. Mirror polish blade, guard and butt plate. The stag handle has a slight curve. Polished turquoise spacer. Ships in zippered case.

KLSP92037 _____ \$ 525.00

Give us a call at 1-800-965-6433 or email Debbie at ce_info@cuttingedge.com for information on how we can help sell your knives.

All fixed blade knives include a sheath unless otherwise stated.



Jesse Davis - Lady Of The Night Dagger

Fixed Blade, Hidden Tang, 4" Blade, 440C Stainless, Mother-of-Pearl Handle, Nickel Silver Hilt, 8 1/8" OAL, New from maker. Traditional dagger blade with sharpened tip only has a mirror polish. Scalloped edge double hilt. Engraved sterling silver collar. No sheath. Ships in zippered case.

KLSP92038 _____ **\$ 525.00**



Jesse Davis - Small Fighter

Fixed Blade, Hidden Tang, 5 3/4" Blade, 440C Stainless, Desert Ironwood Handle, Nickel Silver Guard, Nickel Silver Pommel, 9 1/8" OAL, New from maker. Mirror polish blade. Three-piece guard with filework. Beautiful ironwood handle. No sheath. Ships in zippered case.

KLSP92039 _____ **\$ 550.00**



Leonard Toews - Fighter

Fixed Blade, Hidden Tang, 6 1/8" Blade, Damascus Steel, Desert Ironwood Handle, Nickel Silver Guard, 10 3/4" OAL, New from maker. Striking damascus pattern. Very faint scratch on obverse guard. Beautifully figured ironwood handle. No sheath.

KLSP92040 _____ **\$ 625.00**



Leonard Toews - Fighter

Fixed Blade, Hidden Tang, 8" Blade, Damascus Steel, Desert Ironwood Handle, Nickel Silver Guard, 12 3/4" OAL, New from maker. Random pattern damascus blade. Double hilt. Polished ironwood handle. No sheath.

KLSP92041 _____ **\$ 650.00**



Leonard Toews - Fighter

Fixed Blade, Hidden Tang, 5 1/4" Blade, Damascus Steel, Desert Ironwood Handle, Brass Double Hilt, 9 3/4" OAL, New from maker. Striking damascus pattern. Nicely figured desert ironwood handle. No sheath.

KLSP92042 _____ **\$ 595.00**



L.L. Jones - Lockback

Folder, 3 1/4" Blade, ATS-34 Stainless, Amber Stag Handle Scales, Stainless Bolsters, Stainless Liners, 4 1/2" Closed, Pre-owned. Mirror polish blade with forward nail nick, maker's name and engraving on the ricasso (front and back). Fluted stainless bolsters. Well-matched stag. Ships in zippered case.

KLSP92043 _____ **\$ 550.00**



Jerry Thomas - Lockback

Folder, 3 1/8" Blade, 440C Stainless, Desert Ironwood Handle Scales, Stainless Bolsters, Stainless Liners, 4 1/4" Closed, Pre-owned. Doesn't appear to have been used. There are very faint marks on the mirror polish blade. Bolsters are engraved by Fred D Henderson and signed FDH 97 on the bottom of the bolster. One side has scrolls and the other an eagle head. Dark ironwood scales. Ships in zippered case.

KLSP92044 _____ **\$ 650.00**



Chuck Hawes - Hunter

Fixed Blade, Hidden Tang, 4 3/4" Blade, Laminated Steel, Stag Handle, Nickel Silver Guard, 5/8" Mosaic Butt Pin, 10" OAL, Pre-owned. Not used or carried. Laminated blade shows strong hamon line. Filework on spine. Polished guard. Red fiber and stacked leather spacers compliment the stag handle. Brown leather sheath with copper rivets is signed by the maker. Ships in zippered case.

KLSP92045 _____ **\$ 750.00**



Stek Knives - Hand Forged Damascus Dagger

Fixed Blade, Hidden Tang, 7 1/2" Blade, Damascus Steel, Stag Handle, Nickel Slv Dbl Hilt, Nickel Silver Pommel, Ni Slv/Blk Spacers, 12 3/4" OAL, Pre-owned. Not used or carried. Prominently pattered damascus blade is double-edged. Pinched double hilt. Substantial stag handle. Well-built brown leather sheath. Ships in zippered case.

KLSP92046 _____ **\$ 895.00**



Randall Knives - Model 17 - Astro

Fixed Blade, Full Tang, 5 1/2" Blade, 440B Stainless, 55-56 Rc., Black Micarta Handle, Stainless Dbl Hilt, Thong Hole w/Lanyard, 9 7/8" OAL, New. Dual finish satin/polish blade. Remove bolts to find a slot in the heavy tang that can be used to store matches or other survival items. Green paracord lanyard. Brown leather sheath with sharpening stone in the pocket. Original Randall packaging.

KLSP92047 _____ **\$ 750.00**



Randall Knives - Model 12 - Bear Bowie

Fixed Blade, Commando Handle, Hidden Tang, 7 3/4" Blade, 0-1 Carbon Tool Steel, Black Micarta Handle, Brass Double Hilt, Brass Coolie Cap, Brass Collar, 13" OAL, Pre-owned. Not used or carried. Mirror polish blade with 4 3/4" sharpened top edge. Brass double forward curved hilt. Black micarta handle is framed by scalloped brass collar and coolie cap. Brown leather sheath with sharpening stone. Ships in original Randall packaging.

KLSP92048 _____ **\$ 950.00**



Randall Knives - Model 1 - All Purpose Fighter

Fixed Blade, Commando Handle, Hidden Tang, 7" Blade, 3" Sharpened Top Edge, 440B Stainless, 55-56 Rc., Desert Ironwood Handle, Brass Double Hilt, Brass Smooth Coolie, Brass Smooth Collar, 11 3/4" OAL, Pre-owned. Not used or carried. Mirror polish blade. Polished brass fittings. The stabilized ironwood handle has a very slight check in the wood approximately 1" below collar. Black leather sheath with sharpening stone in pocket.

KLSP92049 _____ \$ 850.00



Randall Knives - Capt Chris Stanaback Fighter

Fixed Blade, Hidden Tang, 4" Blade, Sharpened Top Edge, 440B Stainless, 55-56 Rc., Antique Gold Micarta Handle, Nickel Slv Dbl Hilt, Duraluminum Butt Cap, Black Spacers, 8 1/4" OAL, Pre-owned. Not used or carried but the knife has been stored in the sheath. Original brown leather sheath has white stitching and is stamped 'SSP' on reverse side. Ships in green zippered case.

KLSP92050 _____ \$ 800.00



Randall Knives - Model 5 - Small Camp & Trail

Fixed Blade, Hidden Tang, 4" Blade, 440B Stainless, 55-56 Rc., Fossilized Walrus Ivory Handle, Nickel Silver Hilt, Duraluminum Butt Cap, Blk/Aluminum Spacers, 8 3/8" OAL, Pre-owned. Not used or carried but it has been stored in the sheath. Polished blade with thumb notches on spine. Handsome walrus ivory handle is darker in color on reverse side. Original brown leather sheath. Separate sharpening stone. Ships in black zippered case. CANNOT SHIP OUTSIDE U.S.A.

KLSP92051 _____ \$ 775.00



Randall Knives - Model 7 - Fisherman - Hunter

Fixed Blade, Hidden Tang, 5" Blade, 0-1 Carbon Tool Steel, Stag Handle, Brass Single Hilt, Thong Hole w/ Lanyard, Red/Wht/Blue Spacers, 9 1/2" OAL, Pre-owned. Not used or carried. Polished blade has original owner's name on reverse side. Nice stag. Original brown leather sheath with white stitching and white sharpening stone in pocket.

KLSP92052 _____ \$ 750.00



Randall Knives - Model 8 - Trout & Bird

Fixed Blade, Hidden Tang, 4" Blade, 440B Stainless, 55-56 Rc., Stag Handle, Nickel Silver Hilt, Ni Slv Butt Plate, Red/Wht/Blue Spacers, 8 1/2" OAL, Pre-owned. Not used or carried. Brand new condition. Polished blade with sharpened top edge. Very nice stag handle. Original brown leather sheath has never been used. Separate sharpening stone.

KLSP92053 _____ \$ 650.00



Robert Young - Drop Point Hunter

Fixed Blade, Tapered Tang, 3 3/4" Blade, D2, 60 Rc. Cyro-Treat, Buffalo Horn Handle Scales, Brass Guard, Brass Thong Hole, Red Liners, 8 3/8" OAL, New from maker. Mirror polish blade. Brass guard and hardware. Nice horn scales. Blade is marked "D230" on reverse side as is the dark brown custom leather sheath from the maker.

KLSP92054 _____ \$ 500.00



Robert Young - Drop Point Hunter

Fixed Blade, Full Tapered Tang, 3 1/8" Blade, D2, 60 Rc. Cryro-Treat, Vintage Dymondwood Scales, Brass Guard, Brass Thong Hole, Red Liners, 8" OAL, New from owner. Mirror polish blade with serial number 'D226' marked on reverse ricasso. Hefty handle with contrasting light and dark Dymondwood. Brown leather sheath from the maker is also marked with matching serial number.

KLSP92055 _____ \$ 500.00



Robert Young - Drop Point Hunter

Fixed Blade, Full Taper Tang, 3 3/4" Blade, D2, 60 Rc. Cyro-Treat, Black Paper Micarta Scales, n/a, Brass Guard, Brass Thong Hole, Red Liners, 8 1/2" OAL, New from maker. Mirror polish blade with serial number 'D227' on reverse ricasso. Brass guard and hardware. Vintage paper micarta handle scales. Made-to-fit custom sheath from the maker is also marked with the matching serial number.

KLSP92056 _____ \$ 500.00



Robert Young - Wilderness Hunter

Fixed Blade, Full Tapered Tang, 5 1/4" Blade, D2, 60 Rc. Cyro-Treat, Brown Canvas Micarta Scales, Brass Guard, Brass Thong Hole, Red Liners, 10 1/4" OAL, New from maker. Mirror polish blade with maker's stamp on obverse and serial number 'D240' on reverse ricasso. Brass guard and hardware. Durable canvas micarta handle scales. Brown leather sheath from maker has 'D240' matching serial number and is made to fit the knife.

KLSP92057 _____ \$ 525.00



Robert Young - Bowie Fighter

Fixed Blade, Grooved Handle, Hidden Tang, 10 1/4" Blade, D2, 60 Rc. Cryro-Treat, Ironwood Handle, Brass Double Hilt, Red Spacer, 15 3/8" OAL, New from maker. Satin finish blade is 2 5/16" at its widest. False top-edge. Serial number 'D265' on reverse ricasso. Impressive brass double hilt. Very nicely figured and shaped ironwood handle. Basket stamped brown leather sheath with matching serial number from the maker.

KLSP92058 _____ \$ 950.00



Robert Young - Baby Bear Sub-Hilt Fighter

Fixed Blade, Full Tapered Tang, 4 3/16" Blade, CPM-154 Stainless, 60 Rc. Cyro-Treat, Black/White Ram's Horn Scales, Stainless Hilts, Stainless Thong Hole, Red Liners, 8 3/4" OAL, New from maker. Mirror polished blade with maker's logo on obverse and serial number "C473" etched on reverse ricasso. Stainless steel hilts. Polished and textured horn scales are very striking. Custom made brown leather sheath from the maker has matching serial number.

KLSP92059 _____ **\$ 1000.00**



Jesse Davis - Fighter

Fixed Blade, Full Tang, 5 1/4" Blade, Damascus Steel, Stag Handle Scales, Nickel Slv Bolsters, Mosaic Pins, 9 1/2" OAL, Pre-owned. Not used or carried. Nicely patterned damascus blade with sharpened top edge and maker's name on reverse ricasso. Matched stag handle scales with mosaic pins. No sheath. Ships in zippered case.

KLSP92060 _____ **\$ 625.00**



Mark (Burr Oak Knives) Nevling - Damascus Dangler

Fixed Blade, Full Tang, 2" Blade, Damascus Steel, Mammoth Ivory Handle Scales, Damascus Bolsters, 6" OAL, Pre-owned. Not used or carried. Damascus blade has partial filework on spine. Mosaic damascus bolsters. Beautiful mammoth ivory scales are well-matched. Filework on entire tang. Pouch-style brown leather sheath has snakeskin overlay and a metal clip for hanging on pocket loop. Ships in zippered case.

KLSP92061 _____ **\$ 675.00**



Bailey Bradshaw - San Francisco Boot Style Knife

Fixed Blade, Hidden Tang, 4 5/8" Blade, 52100 Carbon, Fossilized Walrus Ivory Handle, Stainless Hilt, Stainless Collar, 8 3/4" OAL, Pre-owned. Not used or carried. Hand rubbed satin finish blade. Beautifully carved fossilized walrus ivory handle. There is a small pin check on the reverse handle. The sterling silver fitted sheath does not have a belt clip but it is delicately engraved around the edges. Ships in zippered case.

KLSP92062 _____ **\$ 995.00**



Devon "Butch" Beaver - Gent's Boot Knife

Fixed Blade, Hidden Tang, 3 1/2" Blade, ATS-34 Stainless, 4-Piece Yellow Amber Handle, Stainless Guard, Stainless Pommel, Blk/Stainless Spacer, 7 1/8" OAL, Pre-owned. Not used or carried. Mirror polish blade with filework along spine and ricasso. Maker's name on obverse blade. Filework on guard. Bright yellow amber is separated by black and stainless spacers. Leather sheath has metal boot clip. Ships in zippered case.

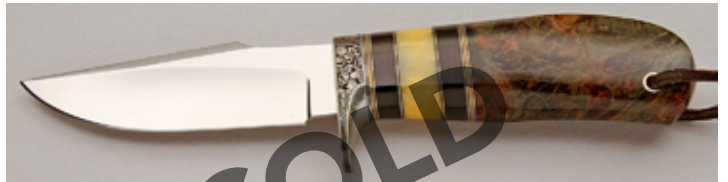
KLSP92063 _____ **\$ 950.00**



Harold Corby - Fighter

Fixed Blade, Finger Grooved Handle, Full Tapered Tang, 5 3/4" Blade, 440C Stainless, Dyed Buckeye Burl Handle Scale, Nickel Silver Guard, Thong Hole, Red Liners, 10 5/8" OAL, Pre-owned. Not used or carried but possibly stored in a sheath at some point. The mirror polish blade has a few faint, light scratch marks. Filework on the spine. A few marks on the guard. Nicely figured burl handle scales. Black leather sheath. Ships in zippered case.

KLSP92064 _____ **\$ 700.00**



D'Alton Holder - Natchez

Fixed Blade, Contoured Handle, Hidden Tang, 4" Blade, ATS-34 Stainless, CA Buckeye Burl Handle, Stainless Guard, Thong Hole w/Lanyard, 8 1/2" OAL, Pre-owned. Not used or carried. Mirror polish blade with "D'holder Peoria, AZ" on reverse side. Beautifully engraved guard is signed by Bruce Shaw. Desert ironwood, amber, nickel silver and brass spacers. Leather lanyard with amber bead. Basketweave sheath with oosic concho and beads from the maker. Ships in zippered case.

KLSP92065 _____ **\$ 1495.00**



D'Alton Holder - D's My Knife

Fixed Blade, Hidden Tang, 4 1/8" Blade, ATS-34 Stainless, Wood and Amber Handle, Stainless Guard, Stainless Pommel, 8 3/4" OAL, Pre-owned. Not used or carried. Knife has been store in the sheath. Mirror polish blade with filework on the spine. Exquisitely engraved guard and pommel is signed by Bruce Shaw. The handle consists of burl wood, desert ironwood and amber with nickel silver and brass spacers. Basketweave tooled leather sheath with oosic conch and beads is original from the maker. Ships in zippered case.

KLSP92066 _____ **\$ 1595.00**

Find More Knives at

cuttingedge.com®



W.D. Pease - Lockback

Folder, 2 3/4" Blade, ATS-34 Stainless, Flute Mammoth Ivory Scales, Stainless Bolsters, Stainless Frame, 4" Closed, Pre-owned. Not used or carried. Hand-rubbed, satin finish blade with nail nick and filework on spine. Makers mark on obverse and "P.D. 2m8" in cursive on the reverse side of blade. Beautifully engraved bolsters. Colorful mammoth ivory is fluted on both sides. More filework on the lockbar. Ships in zippered case.

KLSP92067 _____ \$ 1250.00



Joe Anderson - Mid-Lock

Folder, 3 3/8" Blade, Unknown Steel, Brass Frame w/Stag Inserts, Brass Bolsters, Brass Shield, 4 1/8" Closed, Pre-owned. Not used or carried. Vintage knife. Mirror polish blade with nail nick and filework on spine. Marked 'Andy.1' on obverse and 'LOU KY 01' on reverse ricasso. Polished brass frame has filework as does the lockbar. Nicely matched stag scales. Inside lockbar is marked 'ANDY #01 12-12-80 JOE U.S.A.' Ships in zippered case.

KLSP92068 _____ \$ 595.00



Chuck Hawes - Tanto

Fixed Blade, Hidden Tang, 5 1/2" Blade, W-2 Carbon, Micarta & Tiger Maple Handle, Stainless Dbl Guard, Red Spacer, 10" OAL, Pre-owned. Not used or carried. Carbon steel blade with Hamon line. Maker's mark on obverse. Brushed stainless double hilt. Micarta and wood handle is separated by a thin red spacer. Wood scabbard is overed in brown leather with red stitching. Ships in zippered case.

KLSP92069 _____ \$ 725.00



Chuck Hawes - Camp Knife

Fixed Blade, Hidden Tang, 5" Blade, Damascus Steel, Tiger Maple Handle, Brass Guard, Red Spacer, 10 3/8" OAL, Pre-owned. Not used or carried. High carbon damascus by the maker. Substantial wood handle. Brown leather sheath from Rising Star Leather.

KLSP92070 _____ \$ 650.00



Chuck Hawes - Camp Knife

Fixed Blade, Hidden Tang, 5 1/2" Blade, Damascus Steel, Stag, Leather & Micarta Handle, Brass Guard, Red Spacers, 10" OAL, Pre-owned. Not used or carried. High carbon damascus blade with light filework on the spine. Dyed stag handle with leather washers and micarta spacer. Mosaic pin in the butt. Brown leather sheath with light tooling. Ships in zippered case.

KLSP92071 _____ \$ 675.00



Chuck Hawes - Damascus Hunter

Fixed Blade, Hidden Tang, 4 1/4" Blade, Damascus Steel, Stag Handle, Brass Guard, Red Spacers, 8 7/8" OAL, Pre-owned. Not used or carried. High carbon damascus blade forged by maker. Thumb notches and lift filework along the edge of the blade. Stag handle with green maple spacer. Mosaic pin in butt. Brown leather sheath has light tooling. Ships in zippered case.

KLSP92072 _____ \$ 625.00



L.L. Jones - Boot-Style Knife

Fixed Blade, Full Tapered Tang, 4 1/2" Blade, ATS-34 Stainless, Ram's Horn Handle Scales, Stainless Guard, Thong Hole, Red Liners, 8 1/2" OAL, Pre-owned. Not used or carried. Mirror polished, double-edged blade. Decorative guard with engraved/stippled outline with a mosaic pin insert (each side). Well-matched ram's horn scales. Filework along the tang. Fitted brown leather ship with metal clip from the maker. Ships in zippered case.

KLSP92073 _____ \$ 725.00



Jesse Davis - Fighter

Fixed Blade, Hidden Tang, 4 1/2" Blade, Double-Edged, ATS-34 Stainless, Stag Round Handle, Nickel Silver Guard, Ni Slv Butt Plate, Black/White Spacers, 9" OAL, Pre-owned. Not used or carried. Mirror polish blade is double-edged with thumb notches. Maker's name on reverse ricasso. Nice stag handle. Brown leather sheath has light tooling. Ships in zippered case.

KLSP92074 _____ \$ 595.00



Billy Smith - Scagel-Style Hunter

Fixed Blade, Hidden Tang, 3 3/4" Blade, Damascus Steel, Michigan White Tail Crown +, Nickel Silver Guard, 7 1/8" OAL, New from maker. Damascus is forged from 15N20 and 1080 steels. Handle is made of micarta, nickel silver, red fiber and stabilized stacked leather spacers and finished with the white tail crown. Brown tooled leather sheath from the maker. Ships in zippered case.

KLSP92075 _____ \$ 650.00



Billy Smith - Scagle-Style Hunter

Fixed Blade, Hidden Tang, 3 1/2" Blade, 1080 Forged Carbon Steel, Michigan White Tail Crown Hndl, Nickel Silver Guard, 7 3/4" OAL, New from maker. Polished tool steel blade is forged by the maker. Black, red and white micarta, brass and stabilized stacked leather spacers compliment the white tail crown. Brown tooled sheath from the maker. Ships in zippered case.

KLSP92076 _____ \$ 575.00



Carl Colson - Small Trapper

Fixed Blade, Hidden Tang, 3 7/8" Blade, CPM-154 Stainless, 61 Rc., Tasmanian Blackwood Handle, Stainless Guard, 8 3/4" OAL, New from maker. Mirror polish blade with thumb notches. Stainless guard and stainless fileworked collar. Highly figured blackwood handle. Brown leather sheath from maker is signed 'Carl Colson 23'.

KLSP92077 _____ \$ 735.00



Carl Colson - Big Game Hunter

Fixed Blade, Contoured Handle, Full Tapered Tang, 4 1/4" Blade, CPM-154 Stainless, 60 Rc., Black Canvas Micarta Scales, Stainless Guard, Thong Hole, Red Liners, 8 7/8" OAL, New from maker. Mirror polish blade and fittings. Hefty micarta handle. Black leather sheath from the maker is signed and dated '23'.

KLSP92078 _____ \$ 825.00



Carl Colson - Dropped Hunter

Fixed Blade, Contoured Handle, Full Tapered Tang, 3 3/4" Blade, CPM-154 Stainless, 61 Rc., Green Canvas Micarta Scales, Stainless Guard, Thong Hole, Red Liners, 8 1/4" OAL, New from maker. Mirror polish blade and guard. Nice vintage-looking green micarta handle scales. Brown leather sheath from the maker is signed with '23' year made designation.

KLSP92079 _____ \$ 845.00



Carl Colson - Trapper

Fixed Blade, Hidden Tang, 4 1/4" Blade, CPM-154 Stainless, 61 Rc., Sambar Stag Handle, Stainless Guard, Stainless Butt Cap, 9 3/8" OAL, New from maker. Mirror polish blade with thumb notches. Black, stainless and stacked leather spacers compliment the stag handle. Brown leather sheath from the maker is signed along with '23' year of completion.

KLSP92080 _____ \$ 845.00



Carl Colson - Big Game Hunter

Fixed Blade, Hidden Tang, 4 1/2" Blade, Damascus Steel, Amber Dyed Sambar Stag Handle, Stainless Guard, Stainless Butt Cap, 9 1/8" OAL, New from maker. Alabama Damascus blade has very nice finish. Satin finish guard and butt cap. Red and stainless spacers. Beautiful stag handle. Brown leather sheath from the maker is signed and has '23' year of completion designation.

KLSP92081 _____ \$ 965.00



Jim Gill - Hunter

Fixed Blade, Hidden Tang, 4 3/4" Blade, Unknown Steel, Stag Handle, Brass Guard, Brown Micarta Butt, 9 1/8" OAL, Pre-owned. Not used or carried. Mirror polish blade with maker's name on reverse. Nice stag sandwiched between brown micarta spacer and butt cap. Brown leather sheath.

KLSP92082 _____ \$ 575.00



Fred Ott - Field Knife

Fixed Blade, Hidden Tang, 4 1/8" Blade, 1080 & 15N20 Damascus, Thuya Wood Handle, Nickle Slv Ferrule, Black Fiber Spacers, Ebony Wood Pin, 8 7/8" OAL, Pre-owned. Not used or carried. Damascus blade with maker's name on ricasso. Stellar sea cow bone spacer contrasts with the thuya wood handle and walrus jaw bone pommel. Ebony pin and finial. Brown leather sheath from the maker.

KLSP92083 _____ \$ 800.00



Fred Ott - Hunter 'Personal Knife'

Fixed Blade, Hidden Tang, 3 1/2" Blade, W-2 Carbon, Bocote Wood Handle, Bronze Ferrule, Ebony Wood Butt Cap, Pink Ivory Wood Pin, 7 3/4" OAL, Pre-owned. Not used or carried. High carbon tool steel blade with hamon. Highly figured bocote wood handle with wood pin and dovetailed ebony wood butt cap. Includes traditional Scandinavian-style leather dangle pouch from the maker.

KLSP92084 _____ \$ 775.00



Fred Ott - Aikuchi

Fixed Blade, Hidden Tang, 4" Blade, Damascus Steel, Honey Locust Wood Handle, Bronze Ferrule, Pink Ivory Wood Pin, 8 1/8" OAL, Pre-owned. Not used or carried. Damascus steel forged of 1095/15N20 blade. Beautifully figured wood handle with matching felt-lined honey locust wood sheath.

KLSP92085 _____ \$ 750.00



James Neilson - Damascus Hunter

Fixed Blade, Hidden Tang, 3 3/4" Blade, Damascus Steel, African Blackwood Handle, Silica Bronze Guard, Silica Bronze Spacer, 8" OAL, Pre-owned. Not used or carried. Blade of forged 52100 ball-bearing high carbon steel. Silica bronze guard, spacer and handle pin. Handtooled brown leather sheath by Paul Long has a metal clip.

KLSP92086 _____ \$ 1300.00



Dwight Towell - Clip Point Hunter

Fixed Blade, Hidden Tang, 6" Blade, Unknown Steel, Fossilized Walrus Ivory Handle, Brass Double Hilt, Brass Pommel, 10 1/2" OAL, Pre-owned. Not used or carried. Mirror polish blade with maker's name and '71-74' etched on the obverse side. Brass hardware. Walrus ivory handle with black and ivory spacers. Brown tooled leather sheath is original from the maker. First owner wrote his name in marker on the back of the sheath. CANNOT SHIP OUTSIDE U.S.A.

KLSP92087 _____ \$ 1200.00



Mike Malosh - Camp Knife

Fixed Blade, Hidden Tang, 8" Blade, 0-1 Carbon Tool Steel, Stag Handle w/ Spacers, Stainless Guard, 13 1/8" OAL, Pre-owned. Not used or carried but it has been stored in the sheath. Polished blade with maker's mark on reverse blade. Hefty handle has stainless, micarta, brass, red fiber ans stacked leather spacers. Very nice tooled brown leather sheath by Mosher.

KLSP92088 _____ \$ 600.00



Mike Malosh - Bowie

Fixed Blade, Hidden Tang, 8 3/8" Blade, 0-1 Carbon Tool Steel, Stag Handle, Brass Guard, 13 1/2" OAL, Pre-owned. Not used or carried but it has been stored in the sheath. The polished blade has a few light scratches and carbon spots (minimal). Stag handle with nickel silver and micarta spacers. Brown tooled leather sheath by Mosher.

KLSP92089 _____ \$ 575.00



Treeman Knives - Alaskan Semi Skinner

Fixed Blade, Hidden Tang, 5 1/4" Blade, 5160 Carbon, Stag Handle, Brass Guard, Musk Ox Butt Cap, 10 1/2" OAL, Pre-owned. Not used or carried but has been stored in the sheath. Hammer mark blade with Jim Behring's Treeman logo on obverse blade. Nice stag handle with black micarta, red micarta and brass spacers. Brown leather sheath from Treeman Leather. There are a few light carbon marks on the blade.

KLSP92090 _____ \$ 500.00



Steve Voorhis - Sub-Hilt Fighter

Fixed Blade, Full Tapered Tang, 6" Blade, Sharpened Top Edge, Unknown Steel, Black Micarta Handle Scales, Brass Hilts, Thong Hole, Red Liners, 11" OAL, Pre-owned. Not used or carried. Double hollow ground, mirror polish finish on blade. Maker's name on reverse and "390" stamped on obverse blade. Black leather sheath. Ships in zippered case.

KLSP92091 _____ \$ 750.00



Steve Voorhis - Sib-Hilt Fighter

Fixed Blade, Full Tapered Tang, 5 3/4" Blade, Sharpened Top Edge, Unknown Steel, Brown Micarta Handle Scales, Brass Hilts, Thong Hole, 10 3/4" OAL, Pre-owned. Not used or carried but has been stored in sheath. Double hollow ground, mirror polish blade. Maker's name on reverse and '750' on obverse ricasso. Brown leather sheath. Ships in zippered case.

KLSP92092 _____ \$ 750.00



Steve Voorhis - Sub-Hilt Fighter

Fixed Blade, Full Tapered Tang, 6 7/8" Blade, Sharpened Top Edge, Unknown Steel, Four-Piece Stag Handle Scales, Brass Hilts, Thong Hole, 12" OAL, Pre-owned. Not used or carried. Double hollow ground, mirror polish blade. Maker's name on reverse and '6230' on obverse ricasso. Nice pinned stag scales. Tooled black leather sheath. Ships in zippered case.

KLSP92093 _____ \$ 825.00



Steve Fecas - Fighter

Fixed Blade, Full Tapered Tang, 5 5/8" Blade, Unknown Steel, Dark Wood Handle Scales, Stainless Dbl Hilt, Thong Hole, Black Liners, 10 1/2" OAL, Pre-owned. Not used or carried. Dual mirror and satin polish finish blade with 3 1/4" sharpened top edge. Thumb placement notches under hilt. Nice handle scales. No sheath. Ships in zippered case.

KLSP92094 _____ \$ 600.00



Steve Powers - Hunter

Fixed Blade, Contoured Handle, Full Tapered Tang, 4 3/8" Blade, 154CM Stainless, 60 Rc., Burgundy Micarta Handle Scales, Stainless Bolsters, Thong Hole, Black Liners, 9" OAL, New from maker. Mirror polish blade with filework on spine. Dovetailed bolsters. Light filework on tang. Brown, hot-waxed leather sheath from the maker.

KLSP92095 _____ \$ 695.00

*Do you have knives you'd like
to sell in our catalog?*

E-mail Debbie at ce_info@cuttingedge.com



Steve Powers - Hunter

Fixed Blade, Full Tang, 4" Blade, 154CM Stainless, 60 Rc., Gold Micarta Handle Scales, Nickel Silver Guard, Thong Hole, Red Liners, 8 1/4" OAL, New from maker. Mirror polish blade with light filework on thumb notches on the spine. Good looking micarta scales. Light filework on tang. Hot-waxed brown leather sheath with light tooling from the maker.

KLSP92096 _____ **\$ 695.00**



Steve Powers - Small Hunter

Fixed Blade, N/A, Full Tapered Tang, 3 1/8" Blade, 154CM Stainless, 60 Rc., Red & White Bone Handle Scales, Stainless Bolsters, Thong Hole, Red Liners, 6 5/8" OAL, New from maker. Mirror polish blade with filework on spine. Polished, dovetailed bolsters. Good color combination scales. Light filework on the tang. Hot-waxed brown leather sheath.

KLSP92097 _____ **\$ 595.00**



Steve Powers - Everyday Carry

Fixed Blade, Full Tang, 3 1/2" Blade, 154CM Stainless, 60 Rc., Paua Shell Handle Scales, Stainless Bolsters, Thong Hole, Black Liners, 6 5/8" OAL, New from maker. Mirror polish blade with filework on the spine. Dovetailed bolsters. Colorful paua shell handle. Light filework on the tang. Brown hot-waxed leather sheath from the maker.

KLSP92098 _____ **\$ 695.00**



Paul Myers - Folding Hunter - Slipjoint

Folder, 4 1/2" Blade, Unknown Steel, Jiggered Bone Handle Scales, Ni Slv Bolsters, Nickel Silver Liners, Nickel Silver Shield, 5 1/2" Closed, Pre-owned. Not used or carried. Mirror polish blade with long nail nick and maker's logo on obverse and 'MYERS 584' on reverse. Nice jiggered bone in a rootbeer color. Dovetailed nickel silver bolsters with filework around the liner. Half stop. Stainless back spring. Some storage marks but in excellent working condition.

KLSP92099 _____ **\$ 625.00**



Paul Myers - 2 Blade Trapper - Slipjoint

Folder, 3 1/2" Spey Blade, 3 1/2" Clip Blade, Unknown Steel, Ram's Horn Handle Scales, Ni Silver Bolsters, Red Liners, Nickel Silver Shield, 4 5/8" Closed, Pre-owned. Not used or carried. Mirror polish blades with nail nicks and maker's logo on obverse and 'MYERS 919' on reverse ricasso. Matched ram's horn scales. Dovetailed nickel silver bolsters with filework around the liner. Half stop. Stainless back spring. Some storage marks on bolsters but in excellent working condition.

KLSP92100 _____ **\$ 675.00**



Paul Myers - Clip Point Slipjoint

Folder, 2 3/4" Blade, Unknown Steel, Stag Handle Scales, Ni Silver Bolsters, Red Liners, 3 1/2" Closed, Pre-owned. Not used or carried. Mirror polish blade with long nail nick. Maker's logo on obverse and 'MYERS 566' on reverse ricasso. Nice stag scales. Dovetailed nickel bolsters with filework around the liner. Half Stop. Stainless back spring. Some storage marks on the bolsters but in excellent working condition.

KLSP92101 _____ **\$ 600.00**



Paul Myers - 5-Blade Slipjoint

Folder, Center Clip 2 3/4", Unknown Steel, Red Bone Scales, Ni Silver Bolsters, Nickel Silver Frame, Nickel Silver Shield, 3 7/8" Closed, Pre-owned. Not used or carried. This knife has a blade for every purpose: 2" Pen, 2" small clip, 2 3/4" clip (center blade), 2 1/8" W'harncliffe and 2 1/4" Spey blade. All mirror polished with nail nicks and half stop. Maker's logo on obverse and "MYERS 526" on reverse ricasso. Deep red bone scales. Dovetailed nickel silver bolsters with filework around the liners. Stainless back springs. Excellent condition.

KLSP92102 _____ **\$ 750.00**



Paul Myers - 2 Blade Slipjoint

Folder, 2 3/4" Spear Point, 2" Pen Blade, Unknown Steel, Jiggered Bone Handle Scales, Ni Silver Bolsters, Red Liners, Nickel Silver Shield, 3 1/2" Closed, Pre-owned. Not used or carried. Mirror polish finish on blades with long nail nicks. Maker's logo on obverse and 'MYERS 733' on reverse ricasso. Nice jiggered bone in caramel color. Dovetailed nickel silver bolsters with filework around the liner. Half stop. Stainless back spring. Excellent condition.

KLSP92103 _____ **\$ 650.00**



Darrel Ralph - Big Dogg Maxx - 1st One Made

Folder, Framelock Flipper, 8 3/4" Blade, S30V Stainless, Titanium Handle, Frog Stud, 9 3/4" Closed, Pre-owned. Not used or carried. Handmade by Darrel in 2007. From Darel's son Ian, this is THE original knife made with 8 3/4" blade and the first for Darrel to put a frog stud on because he deemed it too large for a mere pocket clip. Only 10-15 in this size was ever made. Hand-rubbed satin finish blade with false top edge, a fuller that runs almost the length of the blade and the Maxx Glide pivot bearing system for smooth opening & closing. There are a total of eleven black carbon fiber inserts. Ships in zippered case. Excellent action. Rare find.

KLSP92104 _____ **\$ 4500.00**



R.W. Wilson - Bowie

Fixed Blade, Full Tang, 9 3/4" Blade, Unknown Steel, Exotic Wood Handle, Double Brass Guard, Brass Back Bolsters, Red Liners, 14 1/2" OAL, Pre-owned. Not used or carried. Mirror polish blade with false top edge. Maker's mark on reverse ricasso. Nicely figured wood scales. Faint marks on guard from storage and handling. New brown leather sheath from Noordyk, Grand Rapids, MI.

KLSP92106 _____ **\$ 690.00**



Suchat Jangtanong - Linerlock

Folder, 3" Blade, ATS-34 Stainless, Carved Black Lip Pearl Scales, Titanium Liners, 3 7/8" OAL, Pre-owned. Not used or carried. Dual polish tanto blade. Mosaic damascus bolsters. Scrolls are carved into the black lip pearl scales (both sides). Blue anodized liners. Nice filework on the backspacer. Three genuine diamond insets. Ships in zippered pouch.

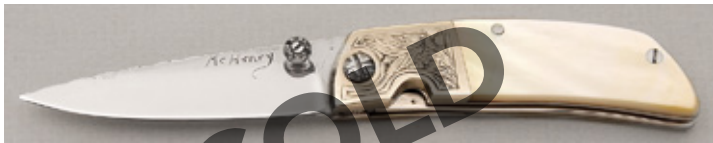
KLSP92107 _____ \$ 770.00



Leon "Worm" Pittman - Custom Engraved Lever Lock

Folder, 2" Blade, Unknown Steel, Engraved Stainless Scales, 2 5/8" OAL, Pre-owned. Not used or carried. Mirror polish blade with maker's worm in a top hat logo on the obverse side. Exquisitely engraved handle scales with gold inlay by Simon Lytton (signed). Mint condition. Ships in zippered case.

KLSP92108 _____ \$ 1010.00



William McHenry - Engraved Linerlock

Folder, 2 5/8" Blade, 440C Stainless, Gold Lip Pearl Handle Scales, Stainless Bolsters, Stainless Frame, 3" OAL, Pre-owned. Not used or carried. Mirror polish blade with thumb stud and filework on spine. Engraved bolsters. Colorful gold lip pearl scales. Filework on backspacer. Very nice vintage gentleman's knife. Ships in zippered case.

KLSP92109 _____ \$ 885.00



William McHenry - Vintage Linerlock

Folder, 3 1/2" Blade, 440C Stainless, Fossilized Walrus Ivory Scales, Brass Bolsters, Brass Frame, 4" OAL, Pre-owned. Not used or carried. Mirror polish blade has thumb stud and filework on the spine. Engraved dovetailed bolsters. Filework on backspacer. Ships in zippered case. CANNOT SHIP OUTSIDE U.S.A.

KLSP92110 _____ \$ 1135.00



Mark (Burr Oak Knives) Nevling - Drop Point Hunter

Fixed Blade, Hidden Tang, 3 1/4" Blade, Damascus Steel, Brazilian Ironwood Handle, Copper Guard, 7 3/8" OAL, Pre-owned. Not used or carried. 'Skulls' mosaic damascus (1084/Nickel). Ebony and copper spacers. Copper pin. Brown leather sheath with python skin overlay. Includes Certificate of Authenticity. Ships in Burr Oak Knives custom black zippered case.

KLSP92111 _____ \$ 565.00



Michael Vagnino - Fancy Slim Hunter

Fixed Blade, Full Tang, 3 1/2" Blade, 52100 Carbon, Black Walnut Handle Scales, Brass Bolsters, Brass Pins, 8 1/8" OAL, Pre-owned. Not used or carried. Mirror polish blade with maker's initials "MJV" on obverse ricasso. Engraved brass bolsters (each side). Nice brown leather sheath with tooling. Ships in zippered case.

KLSP92112 _____ \$ 526.00



Ralph Turnbull - Tanto Fighter

Fixed Blade, Full Tang, 8 5/8" Blade, False Top-Edge, Unknown Steel, Fossilized Walrus Ivory Scales, Nickel Silver Hilt, 13 5/8" OAL, Pre-owned. Not used or carried. Hand-rubbed satin finish blade with maker's name and '2009' on obverse ricasso. Filework around double hilt. Matching filework around the tang. There are a few light scratches but overall excellent condition. Black leather sheath from the maker. Ships in zippered case. CANNOT SHIP OUTSIDE U.S.A.

KLSP92113 _____ \$ 665.00



Tom Downing - Damascus Fighter

Fixed Blade, Full Damascus Tang, 6 1/2" Blade, Damascus Steel, Desert Ironwood Handle Scales, Nickel Silver Guard, Thong Hole, Red Liners, 11 11/16" OAL, Pre-owned. Not used or carried. Maker's name on obverse blade. Ladder damascus. Nicely figured ironwood. A few faint scratches on guard and tang from storage. Basketweave tooled brown leather sheath. Ships in zippered case.

KLSP92114 _____ \$ 810.00



Andreas Kalani - Hagen - Horizon

Fixed Blade, Full Tapered Tang, 4" Blade, 80CrV2 Carbon Steel, Birdseye Maple Handle Scales, Thong Hole w/Lanyard, White Liners, 9" OAL, New from maker. New design. Satin finish high carbon blade. Colorful birdseye maple scales with artificial marble, nickel and G10 spacers. Saber grind. Lanyard with beads. Hybrid kydex/leather sheath. Certificate of Authenticity. Includes Moommix protectant.

KLSP92115 _____ \$ 1010.00



Tim Jackson - Integral Chef's Knife

Fixed Blade, Hidden Tang, 6" Blade, Damascus Steel, African Blackwood Handle, Integral Bolsters, 11 1/2" OAL, New from maker. 576 layers twisted Mosaic Damascus (1095 & 15N20). Contoured, nicely figured handle. Well balanced. Ships in protective blade safe.

KLSP92116 _____ \$ 810.00



Wayne Whittaker - Lockback
 Folder, 3" Blade, ATS-34 Stainless, Mammoth Tooth Handle Scales, Damascus Bolsters, Titanium Liners, 4 1/4" Closed, New from maker. Mirror polish blade with nail nick. Stabilized mammoth tooth scales in a rich burgundy brown color. Titanium liners have a hammered texture all around. Lockbar has filework. Mosaic damascus front and back bolsters. Ships in zippered case.

KLSP92117 _____ \$ 690.00



Cass Stanford - Damascus Slipjoint
 Folder, 3" Blade, Damascus Steel, Amber Stag Handle Scales, Nickel Slv Bolsters, Nickel Silver Liners, 4" Closed, New from maker. Damascus blade of 1080/15N20. Well matched scales. Nickel coated bearings. Filework around the entire frame. Ships in zippered case.

KLSP92118 _____ \$ 610.00



Robert Young - Big Bear Sub-Hilt Fighter
 Fixed Blade, Full Tapered Tang, 8 3/4" Blade, CPM-154 Stainless, 60 Rc. Cryo Treated, Desert Ironwood Handle Scales, Stainless Hilts, Thong Hole, Red Liners, 13 3/4" OAL, New from maker. Mirror polish blade with maker's name on obverse and the knife number P15446 on reverse ricasso. Handsome ironwood scales. Brown leather sheath by maker with the knife number on back side.

KLSP92119 _____ \$ 1215.00



Robert Young - Fat Hunter
 Fixed Blade, Full Tapered Tang, 3 3/8" Drop Pt Blade, CPM-154 Stainless, 60 Rc. Cryo Treated, Olive Drab Micarta Scales, Stainless Guard, Thong Hole, Red Liners, 7 1/2" OAL, New from maker. Mirror polish blade with maker's name on obverse and knife number P15449 on reverse ricasso. Durable micarta scales. Brown leather pouch-style sheath from the maker with knife number on reverse side.

KLSP92120 _____ \$ 425.00



Phil J. Ernest - Damascus Fighter
 Fixed Blade, Full Damascus Tang, 7 3/4" Blade, Damascus Steel, Mammoth Ivory Handle Scales, Damascus Bolsters, 13 3/8" OAL, Pre-owned. Not used or carried. Damascus blade has some staining and light scratching. Nicely matched mammoth ivory handle scales. Mosaic damascus bolsters. Filework along 2 1/4" of the spine. No sheath. Ships in zippered case.

KLSP92121 _____ \$ 650.00



(Hatchet in Hand Logo) Johnson - Small Fighter
 Fixed Blade, False Top-Edge, Full Tapered Tang, 4 1/2" Blade, 440C Stainless, Ivory Micarta Handle Scales, Thong Hole, 9" OAL, Pre-owned. Not used or carried. Satin finish blade with maker's last name and logo on obverse and '440-C' on reverse blade. Nice micarta scales with spacers of red, black, nickel silver and turquoise. Pouch-style brown leather sheath with light tooling. Ships in zippered case.

KLSP92122 _____ \$ 565.00



Herb Derr - Damascus Hunter
 Fixed Blade, Hidden Tang, 5 1/4" Blade, Damascus Steel, Zebra Leg Bone Handle, Nickel Silver Guard, Nickel Silver Butt, 9 1/2" OAL, Pre-owned. Not used or carried. Derr Damascus in birds eye pattern. Dyed bone handle with buckeye burl and nickel silver spacers. Brown leather sheath with lizard skin inlay from the maker. Ships in zippered case.

KLSP92123 _____ \$ 725.00



Kevin Cashen - Bowie
 Fixed Blade, Hidden Tang, 8 3/4" Blade, Damascus Steel, Stag Handle, Nickel Slv Dbl Hilt, Nickel Silver Butt, 14" OAL, Pre-owned. Not used or carried. Random pattern damascus with maker's initials on obverse and the 'MS' designation on reverse ricasso. Beautiful stag handle with nickel silver, black fiber and wood spacers. Dark brown leather sheath with tooling. Ships in zippered case.

KLSP92124 _____ \$ 805.00



Chris Reeve - One Piece Knife - South Africa
 Fixed Blade, 7" Tanto - Tanto II, A-2 Tool Steel, Knurled Handle of A2 Steel, Removable Pommel, 12 1/8" OAL, Pre-owned. Some use with light rust spots on the sharpened edge. Black coating, the blade has the Chris Reeve logo and '55' stamped on the obverse side. Research indicates this to be 1 of 222, with the first 133 being made in South Africa prior to mid-1987. Rare find. Thumb notches on the blade. Removable pommel for storage of survival items. Original black leather sheath with white stitching. There is a slight tear at the top of the sheath.

KLSP92125 _____ \$ 1135.00



Ricardo Perpina - Sub-Hilt Fighter
 Fixed Blade, Full Tapered Tang, 8 1/2" Blade, Damascus Steel, Red Deer Stag Handle Scales, Damascus Hilt, Thong Hole, Red Liners, Bear w/Fish Pin, 13 1/2" OAL, New from maker. Nicely defined damascus blade and hilt. Well matched stag scales. Brass mosaic pins. Dark brown leather sheath.

KLSP92126 _____ \$ 1295.00

All fixed blade knives include a sheath unless otherwise stated.



Ricardo Perpina - Loveless-Style Small Hunter

Fixed Blade, Full Tapered Tang, 6" Blade, 420HC Stainless, Guayacan Wood Handle Scales, Stainless Guard, Thong Hole, Mosaic Pins, 10 1/2" OAL, New from maker. Satin finish blade. Argentine hard wood handle scales. Dark brown leather sheath.

KLSP92127 _____ **\$ 565.00**



Michael Gregory - Interframe Slipjoint

Folder, 2 3/8" Blade, ATS-34 Stainless, Stainless Frame w/MOP Inlay, 3 1/16" Closed, Pre-owned. Not used or carried. Mirror polish blade with "Palmetto Cutlery Club 2011 - 1 of 38" engraved in gold wash on the obverse with maker's name on the reverse. "034" is engraved on the frame. The mother-of-pearl has beautiful color. Nice action. Comes with tooled leather pouch and ships in zippered case.

KLSP92128 _____ **\$ 480.00**



William "Bill" Miller - Hunter

Fixed Blade, Hidden Tang, 3 1/2" Blade, Damascus Steel, Vintage Brown Micarta Handle, Nickel Silver Guard, 8 3/8" OAL, Pre-owned. Not used or carried. 120 layer damascus of 15N20 & 1080 steel. Handsome brown micarta handle. Gray elephant leather sheath. Ships in zippered case.

KLSP92129 _____ **\$ 425.00**



Jerry Hendrix - Drop Point Hunter

Fixed Blade, File Tapered Tang, 3 1/2" Blade, ATS-34 Stainless, Sambar Stag Handle Scales, Stainless Bolsters, Red Liners, 7 3/4" OAL, Pre-owned. Not used or carried. Mirror polish blade. Tiny scuff mark on obverse bolster. Closely matched stag scales. Filework around tang. Brown leather sheath. Ships in zippered case.

KLSP92130 _____ **\$ 480.00**



Jerry Hendrix - Fancy Hunter

Fixed Blade, Full Tapered Tang, 4" Blade, ATS-34 Stainless, Desert Ironwood Handle Scales, Stainless Guard, Thong Hole, Red Liners, Engraved Pins, 8 1/2" OAL, Pre-owned. Not used or carried. High mirror polish blade. Engraved bolsters. Nicely figured ironwood scales. Tooled brown leather sheath has barbed wire around front edge from Rising Star Leather. Ships in zippered case.

KLSP92131 _____ **\$ 645.00**



Carl Colson - Texas Hunter

Fixed Blade, Full Tapered Tang, 3 1/4" Blade, CPM-154 Stainless, 60 Rc., Amber Stag Antler Scales, Stainless Guard, Thong Hole, Red Liners, 7 3/4" OAL, Pre-owned. Not used or carried. Hollow grind, mirror polish blade. Thumb notches. Nicely matched handle scales. Brown Craig English bridal leather sheath is signed by maker and stamped '912', as is the reverse blade. Card of Authenticity states knife was completed 1/22/2020. Ships in zippered case.

KLSP92132 _____ **\$ 610.00**



Deryl Wright - Hunter

Fixed Blade, Hidden Tang, 4" Blade, CTS-XHP Carpenter Steel, 60.5 Rc. Cyro Treat, Stag Handle, Nickel Silver Guard, Nickel Silver Butt, 8 3/8" OAL, New from maker. Mirror polish blade. Black, red, white and nickel silver spacers on stag round handle. The brown leather sheath from the maker is stamped with the Wyandotte Nation logo.

KLSP92133 _____ **\$ 565.00**



Mike Kinker - Model MK-05 Hunter

Fixed Blade, Full Tang, 4" Blade, Stainless Steel, Natural Birdseye Maple Scales, Stainless Bolsters, 8 3/8" OAL, Pre-owned. Not used or carried. Custom knife purchased in the 1990's. Satin finish blade with light filework. Scalloped bolsters. Dark brown leather sheath.

KLSP92134 _____ **\$ 485.00**



Danny Coffman - Dagger-Style Linerlock

Folder, False Top-Edge, 2 7/8" Blade, Unknown Steel, Carved Mother-of-Pearl Scales, Titanium Bolsters, Titanium Liners, 3 7/8" Closed, Pre-owned. Not used or carried. Purchased in 2002 and was told this was maker's 3rd folder to make. Satin finish blade with checkered thumb stud. Filework on backspacer with mother of pearl inserts. Titanium pocket clip has maker's initials "DC 1". Ships in zippered case.

KLSP92135 _____ **\$ 730.00**



Richard Orton - Linerlock

Folder, 2 3/4" Blade, Damascus Steel, Amber Bone w/Light Jig Scales, Titanium Bolsters, Titanium Liners, 3 3/8" Closed, Pre-owned. Not used or carried. Damascus by Jim Ferguson. Checkered thumb stud has cubic zirconia inset. Anodized titanium bolsters and fileworked liners. Damascus backspacer. Filework on spine. Ships in zippered case.

KLSP92136 _____ **\$ 610.00**



Richard Orton - Linerlock

Folder, 3 1/2" Blade, Damascus Steel, Amboyna Burl Handle Scales, Damascus Bolsters, Titanium Liners, 4 3/8" Closed, Pre-owned. Not used or carried. Ladder pattern damascus from Jim Ferguson. Thumb stud has sapphire inset. Damascus bolsters. Filework on anodized titanium liners and backspacer. Maker's name and '2002' on inside spring. Ships in zippered case.

KLSP92137 _____ **\$ 685.00**



James Rodebaugh - Wharncliffe Linerlock

Folder, 2 7/8" Blade, Mosaic Damascus, Mammoth Ivory Scales, Damascus Bolsters, Titanium Liners, 3 5/8" Closed, Pre-owned. Not used or carried. Mosaic damascus blade and bolsters from ABS Master Smith. Outstanding mammoth ivory scales. Thumb stud has tiger eye inset. Blue anodized liners with filework. Anodized stainless backspacer. Smooth action. Ships in zippered case.

KLSP92138 _____ **\$ 1620.00**



Michael Zieba - Chef Knife

Fixed Blade, Full Tang, 6" Blade, AEB-L Stainless Steel, Red Maple Handle Scales, Black Liners, 11" OAL, Pre-owned. Not used or carried. Mottled blade with visible temper lines. Striking red maple scales. Certificate of Authenticity is dated 5/18/22.

KLSP92139 _____ \$ 550.00



Charles Bolton - Skinner

Fixed Blade, Full Tang, 5" Blade, Unknown Steel, India Stag Handle Scales, Stainless Bolsters, Thong Hole w/Lanyard, Red Liners, 9 7/8" OAL, Pre-owned. Not used or carried. Mirror polish blade. Dovetailed stag scales. Very light scratches on obverse bolster. Nice stag scales. Dark brown leather sheath with light tooling. Ships in maker's zippered case.

KLSP92140 _____ \$ 565.00



Rick (RIP Knives) Poirier - Damascus Hunter

Fixed Blade, Hidden Tang, 7 3/4" Blade, Damascus Steel, Redwood Burl Handle, Damascus Dbl Guard, Thong Hole, Mosaic Pin, 12 3/4" OAL, Pre-owned. Not used or carried. 300 layers damascus of 1084/15N20 steel. Colorful burl handle. Brown leather sheath with RIP stamp on front and skull snap.

KLSP92141 _____ \$ 1135.00



Jay Hendrickson - Skinner

Fixed Blade, Full Tapered Tang, 4 7/8" Blade, Carbon Steel, Cocobolo Handle, Nickel Silver Guard, 9 1/4" OAL, Pre-owned. Not used or carried. Mirror polish blade finish. Nice grain in wood handle. Dark brown leather sheath with light tooling.

KLSP92142 _____ \$ 650.00



Ronnie Foster - Hunter

Fixed Blade, Hidden Tang, 4 3/8" Blade, Carbon Steel, Stag Handle, Nickel Silver Guard, Nickel Silver Cap, 9" OAL, Pre-owned. Not used or carried. Satin finish blade. Brown leather sheath.

KLSP92143 _____ \$ 890.00



John Perry - Hunter

Fixed Blade, Hidden Tang, 3 3/4" Blade, Carbon Steel, Maple Handle, Nickel Silver Guard, 8 1/2" Blade, Pre-owned. Not used or carried. Satin finish blade with maker's mark on obverse. Nice, contoured maple handle. Brown leather sheath.

KLSP92144 _____ \$ 730.00



John Martin - Damascus Hunter

Fixed Blade, Full Tang, 3 1/2" Blade, Damascus Steel, Pinned Stag Handle Scales, Nickel Silver Guard, 7 1/4" OAL, Pre-owned. Not used or carried. Damascus blade with maker's initials 'JAM' and JS journey smith designation on the obverse ricasso. Nicely matched stag scales. Tooled brown leather sheath.

KLSP92145 _____ \$ 610.00



James Batson - Small Hunter

Fixed Blade, Full Tapered Tang, 3 1/2" Blade, Carbon Steel, Bone Handle Scales, Thong Hole w/Lanyard, 6 5/8" OAL, Pre-owned. Not used or carried. Satin finish blade. Bone handle scales with cut out thong hole with white leather lanyard. No sheath.

KLSP92146 _____ \$ 730.00



Fred Carter - Fighter

Fixed Blade, Full Tang, 6 3/4" Blade, Sharpened Top Edge, Unknown Steel, Brown Micarta Onlay Scales, Integral Hilt, Thong Hole, 11 3/4" Overall, D'Holder collection. Pre-owned. Not used or carried. Some scuff marks from storage. Maker's name on the tang. No sheath.

KLSP92147 _____ \$ 560.00



Harvey McBurnette - Slipjoint

Folder, 3 1/4" Blade, Unknown Steel, Fossilized Walrus Ivory Scales, Nickel Slv Bolsters, Stainless Liners, 4" Closed, Pre-owned. Not used or carried. Mirror polish blade with nail nick and engraving by the maker. Oval shield on obverse side handle. Reverse handle had scrimshawed large mouth bass, also by maker and is signed "H.M." Filework liners. Excellent action. Ships in zippered case. CANNOT SHIP OUTSIDE U.S.A.

KLSP92148 _____ \$ 750.00



Brad Zinker - Linerlock Filet Knife

Folder, 6 3/8" Blade, Unknown Steel, Black Micarta Handle Scales, Thong Hole, Titanium Liners, 7 9/16" Closed, Pre-owned. Not used or carried. Hollow ground, hand-rubbed satin finish blade. Notches in handle for easy opening. Steel Hex nut fasteners. Nylon lanyard. Ships in zippered case.

KLSP92149 _____ \$ 525.00



W.R. Hurt - Clip Point Hunter

Fixed Blade, Hidden Tang, 5 1/4" Blade, 5160 Carbon, Curly Maple Contoured Handle, Nickel Slv Dbl Hilt, Silver Wire Inlays, 9 1/4" Overall, Pre-owned. Not used or carried. Mirror polish blade with light surface scratches on reverse from sheath storage. Delicate wire inlays on both sides of handle. Filework on spine. Brown leather sheath from maker. Ships in zippered case.

KLSP92150 _____ \$ 545.00

The Cutting Edge®

2900 South 26th Street
Rogers, AR 72758-8571

Order By Phone -1-800-965-6433

© 2023 A.G. Russell™ Knives, Inc. All rights reserved

FIRST CLASS

FIRST CLASS MAIL
U.S. POSTAGE
PAID
A. G. Russell



Tom Downing - Hunter

Fixed Blade, Tapered Tang, 3 7/8" Blade, ATS-34 Stainless, Desert Ironwood Handle Scales, Nickel Silver Guard, Thong Hole, 8 1/2" Overall, Pre-owned. Not used or carried. Mirror polish blade and guard. Nicely figured ironwood handle is contoured. Brown leather sheath with light tooling has "#527" carved on reversed side.

KLSP92151 _____ \$ 520.00



Vince Evans - Fighter

Fixed Blade, Hidden Tang, 7 1/2" Blade, Carbon Damascus, Stag Handle, Brass Double Hilt, Brass But Cap, Red & White Spacers, 12 1/8" Overall, Pre-owned. Not used or carried. Carbon damascus blade with a few carbon spots on both sides of the blade. Nicely aged stag handle. No sheath.

KLSP92152 _____ \$ 520.00



Ron Newton - Take-Down Bowie

Fixed Blade, Hidden Tang, 11 5/8" Blade, Carbon Steel, Stag Handle, Stainless Dbl Hilt, Stainless Pommel, Stainless Collar, 17 3/4" OAL, Pre-owned. Not used or carried. Satin finish blade with false top-edge. Blued hilt, collar and pommel. Hilt is notched all the way around. Maker's mark on obverse blade. Tooled brown leather sheath from Rowe's Leather.

KLSP92153 _____ \$ 1490.00



Brian Lyttle - Damascus Hunter

Fixed Blade, Hidden Tang, 4 5/16" Blade, Damascus Steel, Mammoth Ivory Handle, Nickel Silver Guard, 8 5/8" OAL, Pre-owned. Not used or carried. Stainless Damascus. Nude scrimshaw on obverse handle is by the maker. Hairline crack in the mammoth ivory (stabilized). Dark brown leather pouch-style sheath.

KLSP92154 _____ \$ 795.00



Ralph D. Harris - Slipjoint

Folder, 2 5/8" Blade, ATS-34 Stainless, Engraved Stainless Hndl Scales, M-O-P Inlays, 3 3/8" OAL, Pre-owned. Not used or carried. Hand-rubbed satin finish blade with nail nick. Very colorful mother-of-pearl inlays. Ships in zippered case.

KLSP92155 _____ \$ 580.00



Peyton Ramm - Slagel Hunter

Fixed Blade, Hidden Tang, 4 3/8" Blade, 0-1 Carbon Tool Steel, Black Canvas Micarta Handle, Bronze Guard, 8 3/4" OAL, New from maker. Parkerized 0-1 blade. Contoured micarta handle. Dark brown leather sheath with copper rivets from the maker. Ships in wooden box with maker's name and logo.

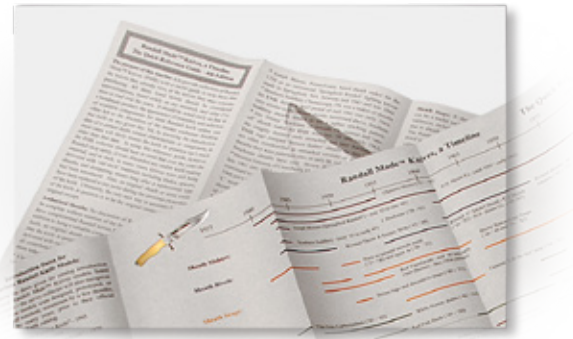
KLSP92156 _____ \$ 770.00



Peyton Ramm - Crockett Small Hunter

Fixed Blade, Hidden Tang, 3 1/4" Blade, 0-1 Carbon Tool Steel, 61.5 Rc, Purple Heart Handle, Brass Guard, Black & Brass Spacer, 7" OAL, New from maker. Parkerized 0-1 blade. Nicely grained purple heart contoured handle. Brown leather sheath with copper rivets from the maker. Ships in wooden box with maker's name and logo.

KLSP92157 _____ \$ 785.00



Randall Made™ Knives Timeline - 4th Edition By Sheldon Wikersham

This is the fourth updated edition of this Randall Timeline that Sheldon Wikersham started some years ago. It is consider to be the authority on the subject. Not only is it a timeline, but on the back side of the map-folded 12" x 25" sheet is detailed information on the sheaths, sheath rivets, sheath snaps, sharpening stones, handle materials, spacer material, blade steel and other miscellaneous information.

BK-SWRTL4 _____ \$300.00

*All fixed blade knives include a sheath
unless otherwise stated.*